

À des fins de recherche uniquement

Anticorps Polyclonal de lapin anti-NFATC3



Numéro de catalogue: 18222-1-AP

Phare

26 Publications

Informations de base

Numéro de catalogue:
18222-1-AP

Taille:
150ul, Concentration: 700 µg/ml by
Nanodrop and 340 µg/ml by Bradford
method using BSA as the standard;

Hôte:
Lapin

Isotype:
IgG

Immunogen Catalog Number:
AG12985

Numéro d'acquisition GenBank:
BC001050

Identification du gène (NCBI):
4775

Nom complet:
nuclear factor of activated T-cells,
cytoplasmic, calcineurin-dependent 3

MW calculé

116 kDa

MW observés:

130-170 kDa

Méthode de purification:

Purification par affinité contre
l'antigène

Dilutions recommandées:

WB 1:2000-1:12000
IP 0.5-4.0 ug for IP and 1:500-1:2000
for WB
IHC 1:20-1:200

Applications

Applications testées:

IHC, IP, WB, ELISA

Demandes citées:

ChIP, IF, IHC, IP, WB

Spécificité de l'espèce:

Humain

Espèces citées:

Humain, rat, souris

**Remarque-IHC: il est suggéré de démasquer
l'antigène avec un tampon de TE buffer pH
9,0; (*) À défaut, 'le démasquage de
l'antigène peut être 'effectué avec un
tampon citrate pH 6,0.**

Contrôles positifs:

WB : cellules Jurkat, cellules K-562

IP : cellules K-562,

IHC : tissu ovarien humain, tissu testiculaire humain

Informations générales

NFAT (nuclear factors of activated T cells) proteins are a family of transcription factors originally identified as mediators of activation of cytokine genes in response to antigenic stimulation of T cells. NFAT proteins also play varied roles in cells outside of the immune system [PMID:11877454]. NFATc3 has specifically been implicated in vasculature development, regulation of smooth muscle contractile phenotype, and modulation of vascular smooth muscle contractility [PMID:11439183,17148444]. The calculated molecular weight of NFATC3 is 115 kDa, but the post-modified protein is about 130-170 kDa (PMID: 15728531, PMID: 15857835)

Publications notables

Autrice	Pubmed ID	Journal	Application
Joshua R Sheak	32997513	Am J Physiol Lung Cell Mol Physiol	WB,IF
Qian Wang	33015191	J Diabetes Res	IF
Feng Zhu	36115111	Biomed Pharmacother	WB

Stockage

Stockage:

Stocker à -20°C. Stable pendant un an après l'expédition.

Tampon de stockage:

PBS avec azoture de sodium à 0,02 % et glycérol à 50 % pH 7,3

L'aliquotage n'est pas nécessaire pour le stockage à -20C

*** Les 20ul contiennent 0,1% de BSA.

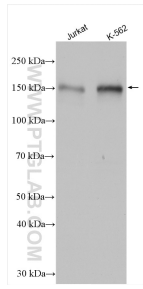
For technical support and original validation data for this product please contact:

T: 1 (888) 4PTGLAB (1-888-478-4522) (toll free
in USA), or 1(312) 455-8498 (outside USA)

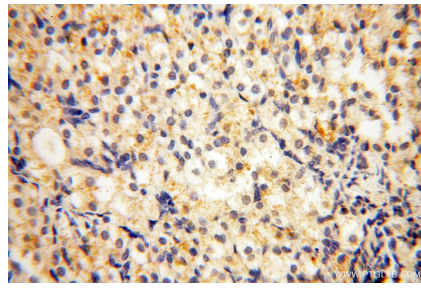
E: proteintech@ptglab.com
W: ptglab.com

This product is exclusively available under Proteintech Group brand and is not available to purchase from any other manufacturer.

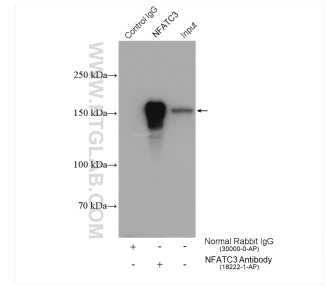
Données de validation sélectionnées



Various lysates were subjected to SDS PAGE followed by western blot with 18222-1-AP (NFATC3 antibody) at dilution of 1:6000 incubated at room temperature for 1.5 hours.



Immunohistochemical analysis of paraffin-embedded human ovary using 18222-1-AP (NFATC3 antibody) at dilution of 1:100 (under 40x lens).



IP result of anti-NFATC3 (IP:18222-1-AP, 4ug; Detection:18222-1-AP 1:1000) with K-562 cells lysate 1760 ug.