

À des fins de recherche uniquement

# Anticorps Polyclonal de lapin anti-PDIA6



Numéro de catalogue: 18233-1-AP

Phare

15 Publications

## Informations de base

Numéro de catalogue:  
18233-1-AP

Taille:  
150ul, Concentration: 450 µg/ml by Nanodrop and 333 µg/ml by Bradford method using BSA as the standard;

Hôte:  
Lapin

Isotype:  
IgG

Immunogen Catalog Number:  
AG12940

Numéro d'acquisition GenBank:  
BC001312

Identification du gène (NCBI):  
10130

Nom complet:  
protein disulfide isomerase family A, member 6

MW calculé  
48 kDa, 54 kDa

MW observés:  
48-54 kDa

Méthode de purification:  
Purification par affinité contre l'antigène

Dilutions recommandées:  
WB 1:1000-1:4000  
IP 0.5-4.0 µg for IP and 1:1000-1:6000 for WB  
IHC 1:20-1:200  
IF 1:20-1:200

## Applications

Applications testées:  
IF, IHC, IP, WB, ELISA

Demandes citées:  
IF, IHC, IP, WB

Spécificité de l'espèce:  
Humain, rat, souris

Espèces citées:  
Humain, souris

**Remarque-IHC: il est suggéré de démasquer l'antigène avec un tampon de TE buffer pH 9,0; (\*) A défaut, 'le démasquage de l'antigène peut être 'effectué avec un tampon citrate pH 6,0.**

Contrôles positifs:

WB : tissu rénal de rat, cellules HEK-293, cellules HeLa, cellules LO2, tissu cardiaque de souris, tissu hépatique de souris, tissu pulmonaire de souris, tissu rénal de souris

IP : cellules HEK-293,

IHC : tissu d'estomac humain, tissu de cancer de l'estomac humain, tissu splénique humain

IF : cellules HeLa,

## Informations générales

PDIA6 (Protein disulfide-isomerase A6) is also named as ERP5, P5, TXNDC7 and belongs to the protein disulfide isomerase family. It is one of the endoplasmic reticulum (ER) resident proteins that catalyze formation, reduction, and isomerization of disulfide bonds in proteins and are thought to play a role in folding of disulfide-bonded proteins (PMID:7590364). It has 2 isoforms produced by alternative splicing. This antibody is specific to PDIA6.

## Publications notables

| Autrice               | Pubmed ID | Journal             | Application |
|-----------------------|-----------|---------------------|-------------|
| Bing Sun              | 27684953  | PLoS One            | WB          |
| Nirav Florian Chhabra | 34487921  | Mol Metab           | WB          |
| Zhi-Jie Xia           | 36393834  | Front Cell Dev Biol | WB          |

## Stockage

Stockage:

Stocker à -20°C. Stable pendant un an après l'expédition.

Tampon de stockage:

PBS avec azoture de sodium à 0,02 % et glycérol à 50 % pH 7,3

L'aliquotage n'est pas nécessaire pour le stockage à -20C

\*\*\* Les 20ul contiennent 0,1% de BSA.

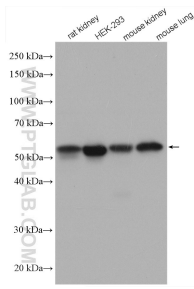
For technical support and original validation data for this product please contact:

T: 1 (888) 4PTGLAB (1-888-478-4522) (toll free in USA), or 1(312) 455-8498 (outside USA)

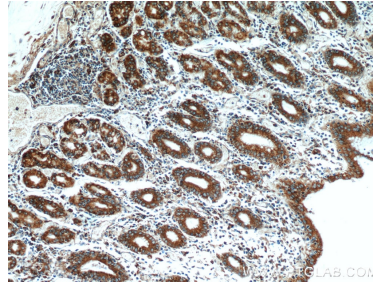
E: proteintech@ptglab.com  
W: ptglab.com

This product is exclusively available under Proteintech Group brand and is not available to purchase from any other manufacturer.

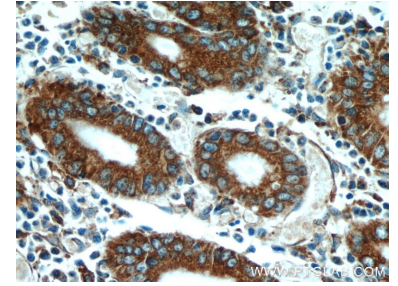
## Données de validation sélectionnées



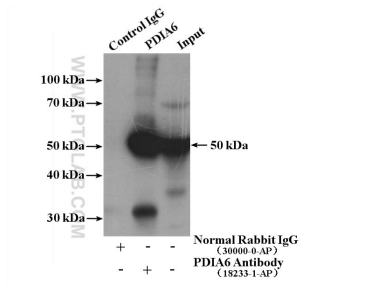
Various lysates were subjected to SDS PAGE followed by western blot with 18233-1-AP (PDIA6 antibody) at dilution of 1:2000 incubated at room temperature for 1.5 hours.



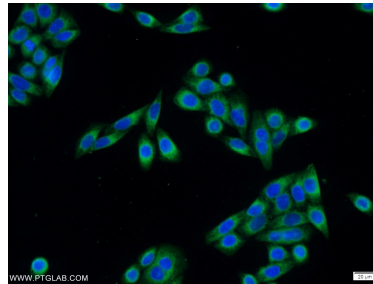
Immunohistochemical analysis of paraffin-embedded human stomach using 18233-1-AP (PDIA6 antibody) at dilution of 1:50 (under 10x lens).



Immunohistochemical analysis of paraffin-embedded human stomach using 18233-1-AP (PDIA6 antibody) at dilution of 1:50 (under 40x lens).



IP Result of anti-PDIA6 (IP:18233-1-AP, 4ug; Detection:18233-1-AP 1:3000) with HEK-293 cells lysate 3000ug.



Immunofluorescent analysis of HeLa cells using 18233-1-AP (PDIA6 antibody) at dilution of 1:50 and Alexa Fluor 488-conjugated AffiniPure Goat Anti-Rabbit IgG(H+L).