

À des fins de recherche uniquement

# Anticorps Polyclonal de lapin anti-PD-L2/CD273



Numéro de catalogue: 18251-1-AP

13 Publications

## Informations de base

Numéro de catalogue:

18251-1-AP

Taille:

150ul, Concentration: 400 µg/ml by Nanodrop;

Hôte:

Lapin

Isotype:

IgG

Immunogen Catalog Number:

AG13039

Numéro d'acquisition GenBank:

BC074766

Identification du gène (NCBI):

80380

Nom complet:

programmed cell death 1 ligand 2

MW calculé

273 aa, 31 kDa

MW observés:

42 kDa, 28 kDa

Méthode de purification:

Purification par affinité contre l'antigène

Dilutions recommandées:

WB 1:500-1:2000

## Applications

Applications testées:

WB, ELISA

Demandes citées:

IHC, WB

Spécificité de l'espèce:

Humain, rat, souris

Espèces citées:

Humain, souris

Contrôles positifs:

WB : cellules NIH/3T3, cellules HepG2, cellules RAW 264.7, tissu cardiaque de souris

## Informations générales

Programmed cell death ligand 2 (PD-L2, also known as CD273, or B7-DC), is one of the B7 family molecules which are type I transmembrane proteins belonging to the immunoglobulin superfamily. PD-L2 was identified both by its homology to PD-L1 and by analysis of genes differentially expressed in libraries generated from dendritic cells (DC) and activated macrophages (PMID: 14515254). PD-L2 is a second ligand for PD-1, a costimulatory molecule that plays an inhibitory role in regulating T cell activation in the periphery.

## Publications notables

| Autrice       | Pubmed ID | Journal        | Application |
|---------------|-----------|----------------|-------------|
| Xiu Liu       | 32969157  | J Cell Mol Med | IHC         |
| Qixia Xu      | 31493351  | Aging Cell     | WB,IHC      |
| Xianlong Chen | 36325339  | Front Immunol  | IHC         |

## Stockage

Stockage:

Stocker à -20°C. Stable pendant un an après l'expédition.

Tampon de stockage:

PBS avec azoture de sodium à 0,02 % et glycérol à 50 % pH 7,3

L'aliquotage n'est pas nécessaire pour le stockage à -20C

\*\*\* Les 20ul contiennent 0,1% de BSA.

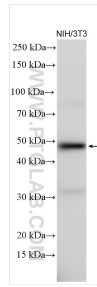
For technical support and original validation data for this product please contact:

T: 1 (888) 4PTGLAB (1-888-478-4522) (toll free in USA), or 1(312) 455-8498 (outside USA)

E: proteintech@ptglab.com  
W: ptglab.com

This product is exclusively available under Proteintech Group brand and is not available to purchase from any other manufacturer.

## Données de validation sélectionnées



NIH/3T3 cells were subjected to SDS PAGE followed by western blot with 18251-1-AP (PD-L2/CD273 antibody) at dilution of 1:1000 incubated at room temperature for 1.5 hours.