

À des fins de recherche uniquement

Anticorps Polyclonal de lapin anti-APOE



Numéro de catalogue: 18254-1-AP

12 Publications

Informations de base

Numéro de catalogue:
18254-1-AP

Taille:
150ul , Concentration: 550 µg/ml by
Nanodrop;

Hôte:
Lapin

Isotype:
IgG

Immunogen Catalog Number:
AG13070

Numéro d'acquisition GenBank:
BC003557

Identification du gène (NCBI):
348

Nom complet:
apolipoprotein E

MW calculé

36 kDa

MW observés:
34-38 kDa

Méthode de purification:
Purification par affinité contre
l'antigène

Dilutions recommandées:
WB 1:1000-1:6000

Applications

Applications testées:
FC, WB, ELISA

Demandes citées:
IF, IHC, WB

Spécificité de l'espèce:
Humain, souris

Espèces citées:
Humain, souris

Contrôles positifs:

WB : cellules HuH-7, plasma humain, sérum de souris

Informations générales

The apolipoprotein E (APOE) is a 299-amino acid polypeptide that mediates the binding, internalization, and catabolism of lipoprotein particles, and also serves as a ligand for the LDL (apo B/E) receptor and for the specific apo-E receptor (chylomicron remnant) of hepatic tissues. The very strong association of the APOE ε4 allele with AD risk and its role in the accumulation of amyloid β in brains of people and animal models solidify the biological relevance of APOE isoforms but do not provide mechanistic insight.

Publications notables

Autrice	Pubmed ID	Journal	Application
Miao Liu	36063979	Life Sci	WB
Da-Yuan Chen	33140044	bioRxiv	WB
Yuanping Shi	33309167	J Genet Genomics	WB

Stockage

Stockage:

Stocker à -20°C. Stable pendant un an après l'expédition.

Tampon de stockage:

PBS avec azoture de sodium à 0,02 % et glycérol à 50 % pH 7,3

L'aliquotage n'est pas nécessaire pour le stockage à -20C

*** Les 20ul contiennent 0,1% de BSA.

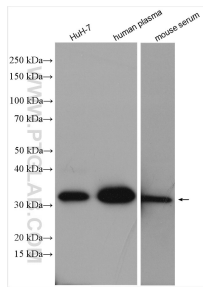
For technical support and original validation data for this product please contact:

T: 1 (888) 4PTGLAB (1-888-478-4522) (toll free
in USA), or 1(312) 455-8498 (outside USA)

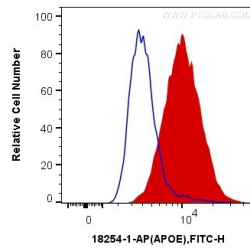
E: proteintech@ptglab.com
W: ptglab.com

This product is exclusively available under Proteintech Group brand and is not available to purchase from any other manufacturer.

Données de validation sélectionnées



Various lysates were subjected to SDS PAGE followed by western blot with 18254-1-AP (APOE antibody) at dilution of 1:3000 incubated at room temperature for 1.5 hours.



1X10⁶ HepG2 cells were intracellularly stained with 0.4 ug Anti-Human APOE (18254-1-AP) and CoraLite®488-Conjugated AffiniPure Goat Anti-Rabbit IgG(H+L) at dilution 1:1000 (red), or 0.4 ug Control Antibody. Cells were fixed with 4% PFA and permeabilized with Flow Cytometry Perm Buffer (PF00011-C).