

À des fins de recherche uniquement

Anticorps Polyclonal de lapin anti-GSR



Numéro de catalogue: 18257-1-AP

Phare

16 Publications

Informations de base

Numéro de catalogue:
18257-1-AP

Taille:
150ul, Concentration: 650 µg/ml by Nanodrop and 300 µg/ml by Bradford method using BSA as the standard;

Hôte:
Lapin

Isotype:
IgG

Immunogen Catalog Number:
AG13080

Numéro d'acquisition GenBank:
BC069244

Identification du gène (NCBI):
2936

Nom complet:
glutathione reductase

MW calculé
522 aa, 56 kDa

MW observés:
52-55 kDa

Méthode de purification:
Purification par affinité contre l'antigène

Dilutions recommandées:
WB 1:1000-1:4000
IP 0.5-4.0 ug for IP and 1:500-1:1000 for WB
IF 1:10-1:100

Applications

Applications testées:
IF, IP, WB, ELISA

Demandes citées:
WB

Spécificité de l'espèce:
Humain, rat, souris

Espèces citées:
Humain, rat, souris

Contrôles positifs:

WB : cellules Jurkat, cellules HeLa, tissu placentaire humain, tissu pulmonaire de souris, tissu testiculaire de rat, tissu testiculaire de souris

IP : cellules HeLa,

IF : cellules MCF-7,

Informations générales

GSR (Glutathione reductase) is also named as GLUR, GRD1 and belongs to the class-I pyridine nucleotide-disulfide oxidoreductase family. It was first found in a black American variant red cell GSR characterized by greater electrophoretic mobility and enzyme activity per unit of hemoglobin than the normal. This protein maintains high levels of reduced glutathione in the cytosol. It has 5 isoforms produced by alternative splicing and alternative initiation. It can also exist as a homodimer with the molecular weight of 110 kDa (PMID:8631352). This antibody is specific to GSR.

Publications notables

Autrice	Pubmed ID	Journal	Application
Lin-Yu Jin	36164394	Oxid Med Cell Longev	WB
Xiaohan Jin	36243112	J Biol Chem	WB
Zhi-Guo Zheng	27193186	Sci Rep	WB

Stockage

Stockage:

Stocker à -20°C. Stable pendant un an après l'expédition.

Tampon de stockage:

PBS avec azoture de sodium à 0,02 % et glycérol à 50 % pH 7,3

L'aliquotage n'est pas nécessaire pour le stockage à -20°C

*** Les 20ul contiennent 0,1% de BSA.

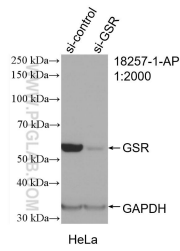
For technical support and original validation data for this product please contact:

T: 1 (888) 4PTGLAB (1-888-478-4522) (toll free in USA), or 1(312) 455-8498 (outside USA)

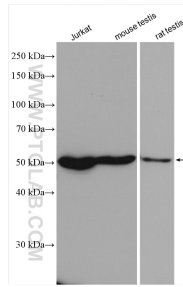
E: proteintech@ptglab.com
W: ptglab.com

This product is exclusively available under Proteintech Group brand and is not available to purchase from any other manufacturer.

Données de validation sélectionnées



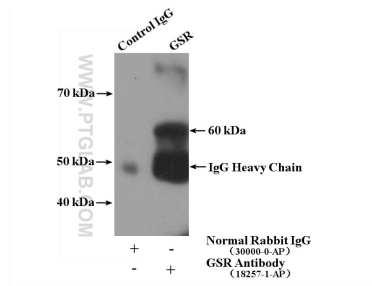
WB result of GSR antibody (18257-1-AP; 1:2000; incubated at room temperature for 1.5 hours) with sh-Control and sh-GSR transfected HeLa cells.



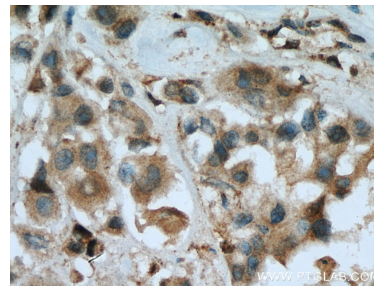
Various lysates were subjected to SDS PAGE followed by western blot with 18257-1-AP (GSR antibody) at dilution of 1:2000 incubated at room temperature for 1.5 hours.



Immunofluorescent analysis of MCF-7 cells, using GSR antibody 18257-1-AP at 1:25 dilution and Rhodamine-labeled goat anti-rabbit IgG (red). Blue pseudocolor = DAPI (fluorescent DNA dye).



IP Result of anti-GSR (IP:18257-1-AP, 4 μ g; Detection:18257-1-AP 1:500) with HeLa cells lysate 2600 μ g.



Immunohistochemical analysis of paraffin-embedded human breast cancer tissue slide using 18257-1-AP (GSR antibody) at dilution of 1:400 (under 40x lens). Heat mediated antigen retrieval with Tris-EDTA buffer (pH 9.0).