

À des fins de recherche uniquement

Anticorps Polyclonal de lapin anti-ATG13



Numéro de catalogue: 18258-1-AP

Phare

14 Publications

Informations de base

Numéro de catalogue:
18258-1-AP

Taille:
150ul, Concentration: 350 µg/ml by Nanodrop and 200 µg/ml by Bradford method using BSA as the standard;

Hôte:
Lapin

Isotype:
IgG

Immunogen Catalog Number:
AG13090

Numéro d'acquisition GenBank:
BC001331

Identification du gène (NCBI):
9776

Nom complet:
KIAA0652

MW calculé
57 kDa

MW observés:
57-63 kDa

Méthode de purification:
Purification par affinité contre l'antigène

Dilutions recommandées:
WB 1:500-1:1000
IP 0.5-4.0 ug for IP and 1:200-1:1000 for WB
IHC 1:50-1:500
IF 1:50-1:500

Applications

Applications testées:
IF, IHC, IP, WB, ELISA

Demandes citées:
CoIP, IF, WB

Spécificité de l'espèce:
Humain, rat, souris

Espèces citées:
Humain, rat, souris

Remarque-IHC: il est suggéré de démasquer l'antigène avec un tampon de TE buffer pH 9,0; (*) A défaut, 'le démasquage de l'antigène peut être 'effectué avec un tampon citrate pH 6,0.

Contrôles positifs:

WB: cellules SH-SY5Y, cellules BGC-823, cellules HEK-293, cellules HeLa, cellules Jurkat, cellules MCF-7, tissu cérébral humain, tissu de cervelet de souris, tissu de thymus de souris, tissu testiculaire de souris

IP: cellules SH-SY5Y,

IHC: tissu cardiaque de souris, tissu cérébral de souris, tissu cérébral humain

IF: cellules SH-SY5Y,

Informations générales

ATG13 is one component protein of the ULK1 complex which is required for autophagosome formation and mitophagy. ATG13 has two nutrient regulatory phosphorylation sites and the phosphorylation status of ATG13 affect regulation of autophagy by modulating enzyme activity and cellular localization of ULK1. Besides, it has been reported the nonautophagic function of ATG13 on cardiac development for ATG13-deficient embryos show myocardial growth defects. (PMID:27387056, 26801615, 26644405)

Publications notables

Autrice	Pubmed ID	Journal	Application
Zhenbing Lv	36295086	Life (Basel)	WB
Ruyuan Wei	35936222	Oxid Med Cell Longev	WB
Yihan Wang	35959437	Front Pharmacol	WB

Stockage

Stockage:

Stocker à -20°C. Stable pendant un an après l'expédition.

Tampon de stockage:

PBS avec azoture de sodium à 0,02 % et glycérol à 50 % pH 7,3

L'aliquotage n'est pas nécessaire pour le stockage à -20C

*** Les 20ul contiennent 0,1% de BSA.

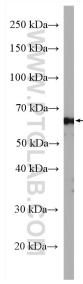
For technical support and original validation data for this product please contact:

T: 1 (888) 4PTGLAB (1-888-478-4522) (toll free in USA), or 1(312) 455-8498 (outside USA)

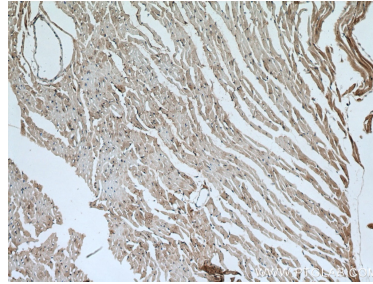
E: proteintech@ptglab.com
W: ptglab.com

This product is exclusively available under Proteintech Group brand and is not available to purchase from any other manufacturer.

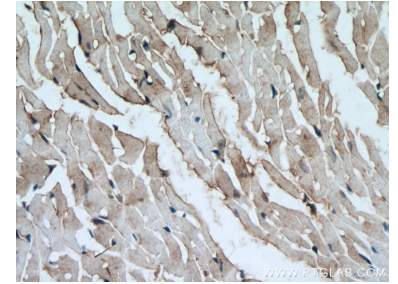
Données de validation sélectionnées



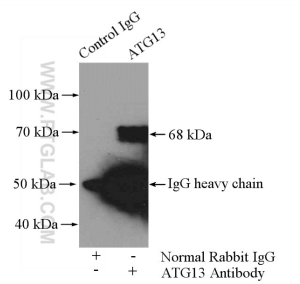
SH-SY5Y cells were subjected to SDS PAGE followed by western blot with 18258-1-AP (ATG13 antibody) at dilution of 1:800 incubated at room temperature for 1.5 hours.



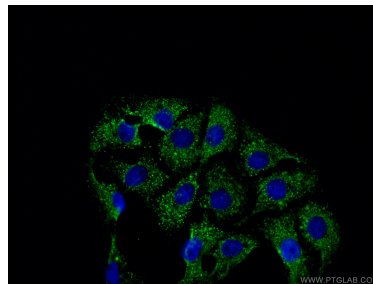
Immunohistochemical analysis of paraffin-embedded mouse heart tissue slide using 18258-1-AP (ATG13 antibody) at dilution of 1:200 (under 10x lens). Heat mediated antigen retrieval with Tris-EDTA buffer (pH 9.0).



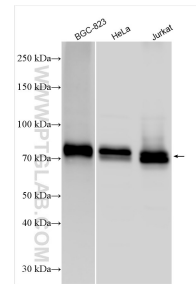
Immunohistochemical analysis of paraffin-embedded mouse heart tissue slide using 18258-1-AP (ATG13 antibody) at dilution of 1:200 (under 40x lens). Heat mediated antigen retrieval with Tris-EDTA buffer (pH 9.0).



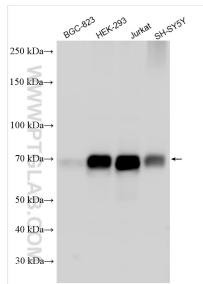
IP Result of anti-ATG13 (IP:18258-1-AP, 4 μ g; Detection:18258-1-AP 1:300) with SH-SY5Y cells lysate 1600 μ g.



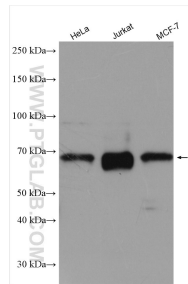
Immunofluorescent analysis of (-20°C Ethanol) fixed SH-SY5Y cells using 18258-1-AP (ATG13 antibody) at dilution of 1:50 and CoraLite488-Conjugated AffiniPure Goat Anti-Rabbit IgG(H+L).



Various lysates were subjected to SDS PAGE followed by western blot with 18258-1-AP (ATG13 antibody) at dilution of 1:2000 incubated at room temperature for 1.5 hours.



Various lysates were subjected to SDS PAGE followed by western blot with 18258-1-AP (ATG13 antibody) at dilution of 1:4000 incubated at room temperature for 1.5 hours.



Various lysates were subjected to SDS PAGE followed by western blot with 18258-1-AP (ATG13 antibody) at dilution of 1:2000 incubated at room temperature for 1.5 hours.