

À des fins de recherche uniquement

# Anticorps Polyclonal de lapin anti-LILRB3



Numéro de catalogue: 18260-1-AP

## Informations de base

<b>Numéro de catalogue:</b> 18260-1-AP	<b>Numéro d'acquisition GenBank:</b> BC112198	<b>Méthode de purification:</b> Purification par affinité contre l'antigène
<b>Taille:</b> 150ul , Concentration: 750 µg/ml by Nanodrop;	<b>Identification du gène (NCBI):</b> 11025	<b>Dilutions recommandées:</b> WB 1:500-1:1000
<b>Hôte:</b> Lapin	<b>Nom complet:</b> leukocyte immunoglobulin-like receptor, subfamily B (with TM and ITIM domains), member 3	
<b>Isotype:</b> IgG	<b>MW calculé</b> 631 aa, 69 kDa	
<b>Immunogen Catalog Number:</b> AG13110	<b>MW observés:</b> 80-90 kDa	

## Applications

<b>Applications testées:</b> WB, ELISA	<b>Contrôles positifs:</b> WB : leucocyte de sang périphérique humain,
<b>Spécificité de l'espèce:</b> Humain	

## Informations générales

The leukocyte immunoglobulin-like receptors (LIRs, also known as ILTs, CD85, and LILRs) comprise a family of related immunoregulatory receptors encoded within the leukocyte receptor cluster (LRC) at chromosomal region 19q13.4 (PMID: 11491530). LIRs are transmembrane proteins containing either two or four extracellular immunoglobulin domains, and have diverse functions, including the regulation of inflammation, immune tolerance, cell differentiation and nervous system plasticity (PMID: 16406677; 26040207). LILRB3, also known as ILT-5 or CD85a, belongs to the subfamily B class of LIR receptors which contain two or four extracellular immunoglobulin domains, a transmembrane domain, and two to four cytoplasmic immunoreceptor tyrosine-based inhibitory motifs (ITIMs). LILRB3 is found on the surface of a variety of cell types including monocytes/macrophages, granulocytes, NK cells and some T cells. It binds to MHC class I molecules and transduces a negative signal that inhibits stimulation of an immune response. LILRB3 has been reported as a myeloid cell checkpoint that elicits profound immunomodulation (PMID: 32870822).

## Stockage

**Stockage:**  
Stocker à -20°C. Stable pendant un an après l'expédition.  
**Tampon de stockage:**  
PBS avec azoture de sodium à 0,02 % et glycérol à 50 % pH 7,3  
L'aliquotage n'est pas nécessaire pour le stockage à -20C

**\*\*\* Les 20ul contiennent 0,1% de BSA.**

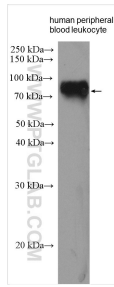
For technical support and original validation data for this product please contact:

T: 1 (888) 4PTGLAB (1-888-478-4522) (toll free in USA), or 1(312) 455-8498 (outside USA)

E: [proteintech@ptglab.com](mailto:proteintech@ptglab.com)  
W: [ptglab.com](http://ptglab.com)

**This product is exclusively available under Proteintech Group brand and is not available to purchase from any other manufacturer.**

## Données de validation sélectionnées



human peripheral blood leukocyte were subjected to SDS PAGE followed by western blot with 18260-1-AP (LILRB3 antibody) at dilution of 1:600 incubated at room temperature for 1.5 hours.