

À des fins de recherche uniquement

Anticorps Polyclonal de lapin anti-Pinin



Numéro de catalogue: 18266-1-AP

Phare

5 Publications

Informations de base

Numéro de catalogue:

18266-1-AP

Taille:

150ul, Concentration: 500 µg/ml by Nanodrop and 260 µg/ml by Bradford method using BSA as the standard;

Hôte:

Lapin

Isotype:

IgG

Immunogen Catalog Number:

AG6643

Numéro d'acquisition GenBank:

BC062602

Identification du gène (NCBI):

5411

Nom complet:

pinin, desmosome associated protein

MW calculé

82 kDa

MW observés:

82 kDa, 140 kDa

Méthode de purification:

Purification par affinité contre l'antigène

Dilutions recommandées:

WB 1:500-1:2000

IP 0.5-4.0 ug for IP and 1:200-1:1000 for WB

IF 1:50-1:500

Applications

Applications testées:

IF, IP, WB, ELISA

Demandes citées:

IF, IHC, IP, RIP, WB

Spécificité de l'espèce:

Humain

Espèces citées:

Humain, souris

Contrôles positifs:

WB : cellules HeLa, cellules HepG2

IP : cellules HeLa,

IF : cellules HeLa,

Informations générales

PNN, also named as DRS or 140 kDa nuclear and cell adhesion-related phosphoprotein, is a 717 amino acid protein, which belongs to the pinin family. PNN localizes in the plasma membrane and is expressed in placenta, lung, liver, kidney, pancreas, spleen, thymus, prostate, testis, ovary, small intestine, colon, heart, epidermis, esophagus, brain and smooth and skeletal muscle. PNN is expressed strongly in melanoma metastasis lesions and advanced primary tumors. PNN as a transcriptional activator binds to the E-box 1 core sequence of the E-cadherin promoter gene. PNN is involved in the establishment and maintenance of epithelia cell-cell adhesion. PNN is a potential tumor suppressor for renal cell carcinoma. The calculated molecular weight of PNN is 82 kDa (native form), but the post-modified protein is 140 kDa (phospho form of isoform 1).

Publications notables

Autrice	Pubmed ID	Journal	Application
Xuejun Yang	27175589	Oncotarget	WB
Ting Tang	32364663	Mol Oncol	WB,IP,IF
Liyuan Zhang	27384878	Oncotarget	WB

Stockage

Stockage:

Stocker à -20°C. Stable pendant un an après l'expédition.

Tampon de stockage:

PBS avec azoture de sodium à 0,02 % et glycérol à 50 % pH 7,3

L'aliquotage n'est pas nécessaire pour le stockage à -20C

*** Les 20ul contiennent 0,1% de BSA.

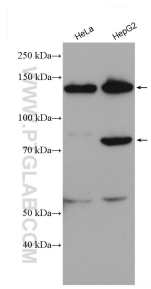
For technical support and original validation data for this product please contact:

T: 1 (888) 4PTGLAB (1-888-478-4522) (toll free in USA), or 1(312) 455-8498 (outside USA)

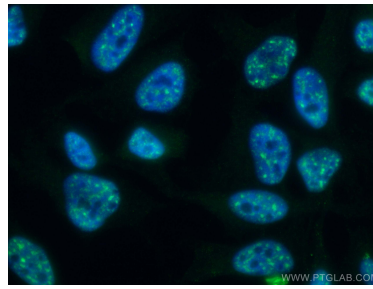
E: proteintech@ptglab.com
W: ptglab.com

This product is exclusively available under Proteintech Group brand and is not available to purchase from any other manufacturer.

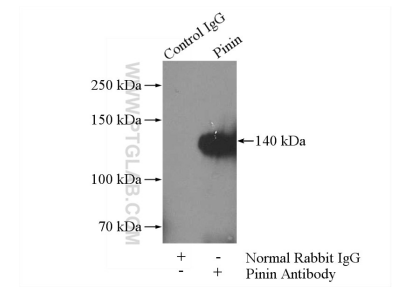
Données de validation sélectionnées



Various lysates were subjected to SDS PAGE followed by western blot with 18266-1-AP (Pinin antibody) at dilution of 1:1000 incubated at room temperature for 1.5 hours.



Immunofluorescent analysis of (4% PFA) fixed HeLa cells using Pinin antibody (18266-1-AP) at dilution of 1:200 and CoraLite@488-Conjugated AffiniPure Goat Anti-Rabbit IgG(H+L).



IP Result of anti-Pinin (IP:18266-1-AP, 4 μ g; Detection:18266-1-AP 1:300) with HeLa cells lysate 520 μ g.