

À des fins de recherche uniquement

Anticorps Polyclonal de lapin anti-CCDC85B



Numéro de catalogue: 18282-1-AP

2 Publications

Informations de base

Numéro de catalogue:

18282-1-AP

Taille:

150ul, Concentration: 300 µg/ml by Nanodrop and 173 µg/ml by Bradford method using BSA as the standard;

Hôte:

Lapin

Isotype:

IgG

Immunogen Catalog Number:

AG13129

Numéro d'acquisition GenBank:

BC008796

Identification du gène (NCBI):

11007

Nom complet:

coiled-coil domain containing 85B

MW calculé

22 kDa

MW observés:

24-28 kDa

Méthode de purification:

Purification par affinité contre l'antigène

Dilutions recommandées:

WB 1:200-1:1000

IP 0.5-4.0 ug for IP and 1:200-1:1000 for WB

IHC 1:50-1:500

IF 1:50-1:500

Applications

Applications testées:

IF, IHC, IP, WB, ELISA

Demandes citées:

IF, WB

Spécificité de l'espèce:

Humain, souris

Espèces citées:

Humain

Remarque-IHC: il est suggéré de démasquer l'antigène avec un tampon de TE buffer pH 9,0; (*) A défaut, 'le démasquage de l'antigène peut être 'effectué avec un tampon citrate pH 6,0.

Contrôles positifs:

WB : tissu cardiaque de souris, tissu pulmonaire de souris

IP : tissu cardiaque de souris,

IHC : tissu hépatique humain,

IF : cellules HeLa,

Informations générales

Coiled-coil domain-containing protein 85B (CCDC85B), also named as DIPA, is 202 amino acid protein, which belongs to the CCDC85 family. CCDC85B localizes in the nucleus and cytoplasm. CCDC85B is widely expressed in many tissues and functions as a transcriptional repressor. CCDC85B may inhibit the activity of CTNNB1 in a TP53-dependent manner and thus regulate cell growth. CCDC85B may play a role in adipocyte differentiation.

Publications notables

Autrice	Pubmed ID	Journal	Application
Kevin G Mark	37478862	Cell	WB
Nan Zhang	36822595	Cell Prolif	IF

Stockage

Stockage:

Stocker à -20°C. Stable pendant un an après l'expédition.

Tampon de stockage:

PBS avec azoture de sodium à 0,02 % et glycérol à 50 % pH 7,3

L'aliquotage n'est pas nécessaire pour le stockage à -20C

*** Les 20ul contiennent 0,1% de BSA.

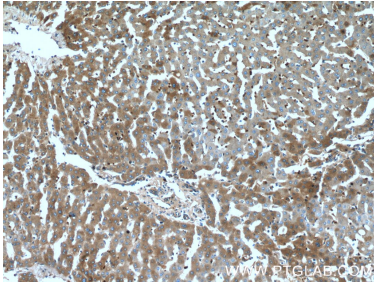
For technical support and original validation data for this product please contact:

T: 1 (888) 4PTGLAB (1-888-478-4522) (toll free in USA), or 1(312) 455-8498 (outside USA)

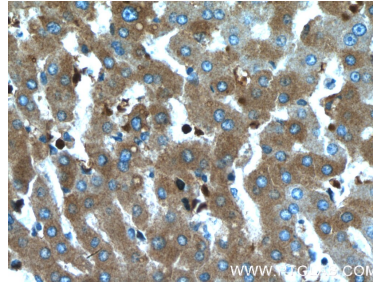
E: proteintech@ptglab.com
W: ptglab.com

This product is exclusively available under Proteintech Group brand and is not available to purchase from any other manufacturer.

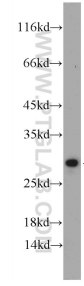
Données de validation sélectionnées



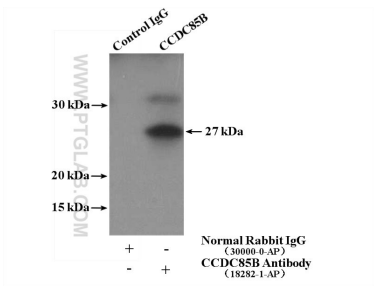
Immunohistochemical analysis of paraffin-embedded human liver tissue slide using 18282-1-AP (CCDC85B antibody) at dilution of 1:200 (under 10x lens).



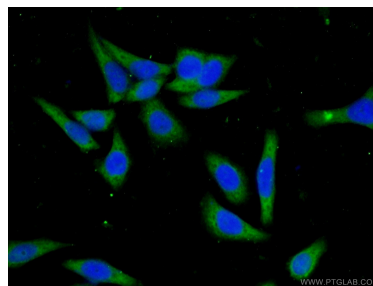
Immunohistochemical analysis of paraffin-embedded human liver tissue slide using 18282-1-AP (CCDC85B antibody) at dilution of 1:200 (under 40x lens).



mouse heart tissue were subjected to SDS PAGE followed by western blot with 18282-1-AP (CCDC85B Antibody) at dilution of 1:300 incubated at room temperature for 1.5 hours.



IP Result of anti-CCDC85B (IP:18282-1-AP, 4ug; Detection:18282-1-AP 1:300) with mouse heart tissue lysate 3600ug.



Immunofluorescent analysis of (-20°C Ethanol) fixed HeLa cells using 18282-1-AP (CCDC85B antibody) at dilution of 1:50 and Alexa Fluor 488-conjugated AffiniPure Goat Anti-Rabbit IgG(H+L).