

À des fins de recherche uniquement

# Anticorps Polyclonal de lapin anti-HRAS-Specific



Numéro de catalogue: 18295-1-AP

Phare

48 Publications

## Informations de base

Numéro de catalogue:  
18295-1-AP

Taille:  
150ul, Concentration: 700 µg/ml by  
Nanodrop;

Hôte:  
Lapin

Isotype:  
IgG

Numéro d'acquisition GenBank:  
BC006499

Identification du gène (NCBI):  
3265

Nom complet:  
v-Ha-ras Harvey rat sarcoma viral  
oncogene homolog

MW calculé  
21 kDa

MW observés:  
21 kDa

Méthode de purification:  
Purification par affinité contre  
l'antigène

Dilutions recommandées:  
WB 1:500-1:2000  
IP 0.5-4.0 µg for IP and 1:500-1:2000  
for WB  
IF 1:200-1:800

## Applications

Applications testées:  
FC (Intra), IF, IP, WB, ELISA

Demandes citées:  
IF, IHC, IP, WB

Spécificité de l'espèce:  
Humain, rat, souris

Espèces citées:  
Humain, rat, souris

Contrôles positifs:

WB : cellules HEK-293, cellules C6, cellules NIH/3T3,  
cellules PC-3, cellules SH-SY5Y, tissu rénal de souris

IP : tissu cérébral de souris,

IF : cellules MCF-7,

## Informations générales

HRAS, also named as c-bas/has and RASH1, is v-Ha-ras Harvey rat sarcoma viral oncogene homolog from the mammalian ras gene family and it is a member of the small GTPase superfamily. RAS proteins are involved in signal transduction pathways, and bind GDP/GTP and possess intrinsic GTPase activity. Defects in HRAS are a cause of cancer. The antibody is specific to HRAS, can't recognize NRAS and KRAS.

## Publications notables

Autrice	Pubmed ID	Journal	Application
Andrew M Waters	28951536	Sci Signal	WB
Thomas McFall	31551296	Sci Signal	WB
Hiroshi Senoo	34551282	Mol Cell	IP

## Stockage

Stockage:

Stocker à -20°C. Stable pendant un an après l'expédition.

Tampon de stockage:

PBS avec azoture de sodium à 0,02 % et glycérol à 50 % pH 7,3

L'aliquotage n'est pas nécessaire pour le stockage à -20C

\*\*\* Les 20ul contiennent 0,1% de BSA.

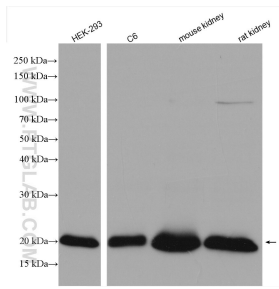
For technical support and original validation data for this product please contact:

T: 1 (888) 4PTGLAB (1-888-478-4522) (toll free  
in USA), or 1(312) 455-8498 (outside USA)

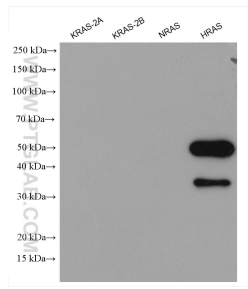
E: [proteintech@ptglab.com](mailto:proteintech@ptglab.com)  
W: [ptglab.com](http://ptglab.com)

This product is exclusively available under Proteintech Group brand and is not available to purchase from any other manufacturer.

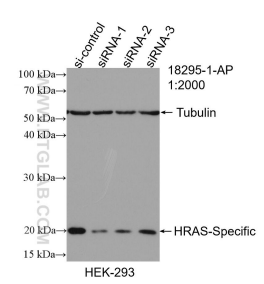
## Données de validation sélectionnées



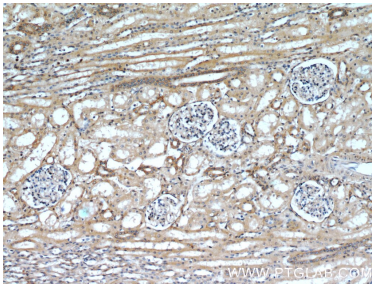
Various lysates were subjected to SDS PAGE followed by western blot with 18295-1-AP (HRAS-Specific antibody) at dilution of 1:1000 incubated at room temperature for 1.5 hours.



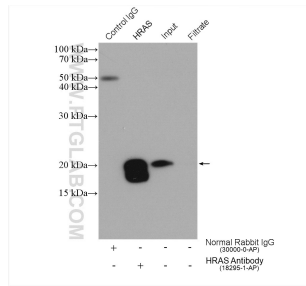
Recombinant proteins (ag27444 (6\*His tag-KRAS-2A), ag21645(6\*His tag-KRAS-2B), ag29746(6\*His tag-NRAS), ag23265(GST-HRAS)) were subjected to SDS PAGE followed by western blot with 16155-1-AP (KRAS-2B-specific antibody) at dilution of 1:2000 incubated at room temperature for 1.5 hours.



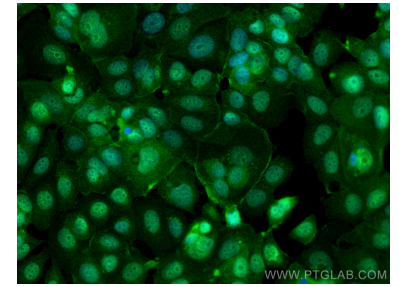
HEK-293 cells were subjected to SDS PAGE followed by western blot with 18295-1-AP (HRAS-Specific antibody) at dilution of 1:2000 incubated at room temperature for 1.5 hours.



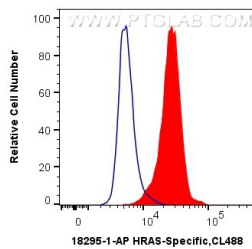
Immunohistochemical analysis of paraffin-embedded human kidney slide using 18295-1-AP (HRAS-Specific Antibody) at dilution of 1:50.



IP result of anti-HRAS-Specific(IP:18295-1-AP, 4ug; Detection:18295-1-AP 1:1000) with mouse brain tissue lysate 1840 ug.



Immunofluorescent analysis of (4% PFA) fixed MCF-7 cells using HRAS-Specific antibody (18295-1-AP) at dilution of 1:400 and CoraLite®488-Conjugated AffiniPure Goat Anti-Rabbit IgG(H+L).



1X10<sup>6</sup> HeLa cells were intracellularly stained with 0.4 ug Anti-Human HRAS-Specific (18295-1-AP) and CoraLite®488-Conjugated AffiniPure Goat Anti-Rabbit IgG(H+L) at dilution 1:1000 (red), or 0.4 ug Control Antibody. Cells were fixed with 4% PFA and permeabilized with Flow Cytometry Perm Buffer (PF00011-C).