

À des fins de recherche uniquement

Anticorps Polyclonal de lapin anti-BMF



Numéro de catalogue: 18298-1-AP

Phare

4 Publications

Informations de base

Numéro de catalogue:
18298-1-AP

Taille:
150ul, Concentration: 300 µg/ml by
Nanodrop and 233 µg/ml by Bradford
method using BSA as the standard;

Hôte:
Lapin

Isotype:
IgG

Numéro d'acquisition GenBank:
BC069505

Identification du gène (NCBI):
90427

Nom complet:
Bcl2 modifying factor

MW calculé
21 kDa

MW observés:
24 kDa

Méthode de purification:
Purification par affinité contre
l'antigène

Dilutions recommandées:
WB 1:200-1:800

Applications

Applications testées:
WB, ELISA

Demandes citées:
WB

Spécificité de l'espèce:
Humain

Espèces citées:
Humain, souris

Contrôles positifs:

WB : tissu placentaire humain, cellules HEK-293

Informations générales

BMF belongs to the BCL2 protein family. BCL2 family members form hetero- or homodimers and act as anti- or pro-apoptotic regulators that are involved in a wide variety of cellular activities such as central regulators of apoptotic cell death. BMF contains a single BCL2 homology domain 3 (BH3), and has been shown to bind BCL2 proteins and function as an apoptotic activator. This protein is found to be sequestered to myosin V motors by its association with dynein light chain 2, which may be important for sensing intracellular damage and triggering apoptosis. Alternatively spliced transcript variants encoding different isoforms have been identified. BMF is widely expressed in tissues such as pancreas, liver and kidney, and in hematopoietic tissues.

Publications notables

Autrice	Pubmed ID	Journal	Application
Yu Guohua G	23133614	PLoS One	WB
Kaiqin Ye	32620849	Nat Commun	WB
Feng Xu	35280673	Int J Biol Sci	WB

Stockage

Stockage:

Stocker à -20°C. Stable pendant un an après l'expédition.

Tampon de stockage:

PBS avec azoture de sodium à 0,02 % et glycérol à 50 % pH 7,3

L'aliquotage n'est pas nécessaire pour le stockage à -20C

*** Les 20ul contiennent 0,1% de BSA.

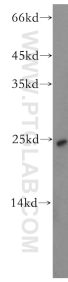
For technical support and original validation data for this product please contact:

T: 1 (888) 4PTGLAB (1-888-478-4522) (toll free
in USA), or 1(312) 455-8498 (outside USA)

E: proteintech@ptglab.com
W: ptglab.com

This product is exclusively available under Proteintech Group brand and is not available to purchase from any other manufacturer.

Données de validation sélectionnées



human placenta tissue were subjected to SDS PAGE followed by western blot with 18298-1-AP (BMF antibody) at dilution of 1:300 incubated at room temperature for 1.5 hours.