

À des fins de recherche uniquement

Anticorps Polyclonal de lapin anti-HER2/ErbB2



Numéro de catalogue: 18299-1-AP

Phare

52 Publications

Informations de base

Numéro de catalogue:

18299-1-AP

Taille:

150µl, Concentration: 700 µg/ml by Nanodrop;

Hôte:

Lapin

Isotype:

IgG

Numéro d'acquisition GenBank:

BC167147

Identification du gène (NCBI):

2064

Nom complet:

v-erb-b2 erythroblastic leukemia viral oncogene homolog 2, neuro/glioblastoma derived oncogene homolog (avian)

MW calculé

138 kDa

MW observés:

185 kDa

Méthode de purification:

Purification par affinité contre l'antigène

Dilutions recommandées:

WB 1:2000-1:12000

IP 0.5-4.0 µg for IP and 1:500-1:1000 for WB

IHC 1:300-1:1200

IF 1:50-1:500

Applications

Applications testées:

FC, IF, IHC, IP, WB, ELISA

Demandes citées:

FC, IF, IHC, WB

Spécificité de l'espèce:

Humain, souris

Espèces citées:

Humain, rat, souris

Contrôles positifs:

WB : cellules 4T1, cellules HeLa, cellules MCF-7, cellules SGC-7901

IP : cellules SGC-7901,

IHC : tissu de cancer du sein humain,

IF : tissu de cancer du sein humain,

Remarque-IHC: il est suggéré de démasquer l'antigène avec un tampon de TE buffer pH 9,0; (*) À défaut, 'le démasquage de l'antigène peut être effectué avec un tampon citrate pH 6,0.

Informations générales

HER2, also known as ErbB2 and Neu, is a 185-kDa transmembrane glycoprotein that is a member of the epidermal growth factor (EGF) receptor family of receptor tyrosine kinases. It has no ligand binding domain of its own and therefore cannot bind growth factors. However, it does bind tightly to other ligand-bound EGF receptor family members to form a heterodimer, stabilizing ligand binding and enhancing kinase-mediated activation of downstream signalling pathways, such as those involving mitogen-activated protein kinase and phosphatidylinositol-3 kinase. Amplification and/or overexpression of HER2 have been reported in numerous cancers, including breast and ovarian tumors. HER2 is a therapeutic target for the treatment of breast cancer and other carcinomas. This antibody raised against a synthesized peptide corresponding to 1237-1255aa of human HER2 recognizes the 185-kDa full-length glycosylated form and other lower molecular-mass forms of HER2, including the truncated form.

Publications notables

Autrice	Pubmed ID	Journal	Application
Samusi Adediran	36230550	Cancers (Basel)	WB
Zhirui Zhang	27658586	J Exp Clin Cancer Res	WB
Yangcenzi Xie	36069700	Anal Chem	WB,IF

Stockage

Stockage:

Stocker à -20°C. Stable pendant un an après l'expédition.

Tampon de stockage:

PBS avec azoture de sodium à 0,02 % et glycérol à 50 % pH 7,3

L'aliquotage n'est pas nécessaire pour le stockage à -20C

*** Les 20ul contiennent 0,1% de BSA.

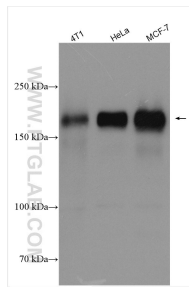
For technical support and original validation data for this product please contact:

T: 1 (888) 4PTGLAB (1-888-478-4522) (toll free in USA), or 1(312) 455-8498 (outside USA)

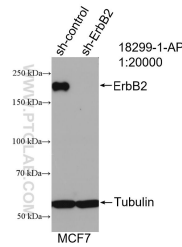
E: proteintech@ptglab.com
W: ptglab.com

This product is exclusively available under Proteintech Group brand and is not available to purchase from any other manufacturer.

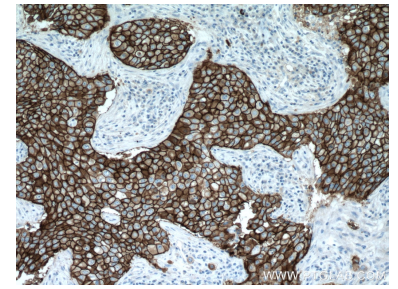
Données de validation sélectionnées



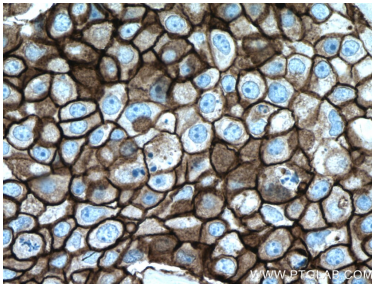
Various lysates were subjected to SDS PAGE followed by western blot with 18299-1-AP (HER2/ErbB2 antibody) at dilution of 1:6000 incubated at room temperature for 1.5 hours.



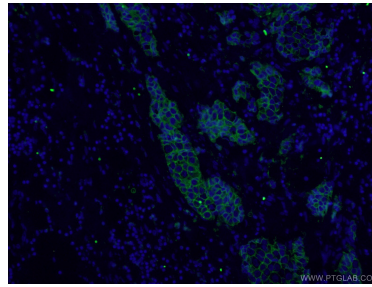
WB result of HER2/ErbB2 antibody (18299-1-AP; 1:20000; incubated at room temperature for 1.5 hours) with sh-Control and sh-HER2/ErbB2 transfected MCF-7 cells.



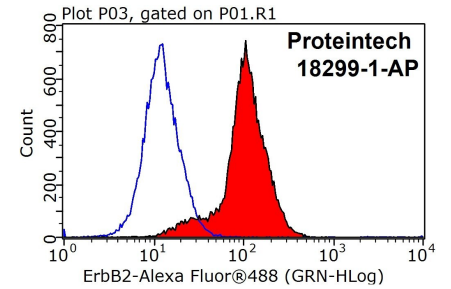
Immunohistochemical analysis of paraffin-embedded human breast cancer tissue slide using 18299-1-AP (HER2/ErbB2 antibody) at dilution of 1:600 (under 10x lens. Heat mediated antigen retrieval with Tris-EDTA buffer (pH 9.0).



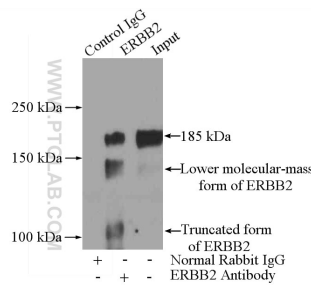
Immunohistochemical analysis of paraffin-embedded human breast cancer tissue slide using 18299-1-AP (HER2/ErbB2 antibody) at dilution of 1:600 (under 40x lens. Heat mediated antigen retrieval with Tris-EDTA buffer (pH 9.0).



Immunofluorescent analysis of (4% PFA) fixed human breast cancer tissue using 18299-1-AP (HER2/ErbB2 antibody) at dilution of 1:50 and Alexa Fluor 488-conjugated AffiniPure Goat Anti-Rabbit IgG(H+L).



1x10⁶ MCF-7 cells were stained with 0.2ug HER2/ErbB2 antibody (18299-1-AP, red) and control antibody (blue). Fixed with 90% MeOH blocked with 3% BSA (30 min). Alexa Fluor 488-conjugated AffiniPure Goat Anti-Rabbit IgG(H+L) with dilution 1:1000.



IP Result of anti-HER2/ErbB2 (IP:18299-1-AP, 5ug; Detection:18299-1-AP 1:500) with SGC-7901 cells lysate 2400ug.