

À des fins de recherche uniquement

# Anticorps Polyclonal de lapin anti-Plasminogen



Numéro de catalogue: 18300-1-AP

1 Publications

## Informations de base

<b>Numéro de catalogue:</b> 18300-1-AP	<b>Numéro d'acquisition GenBank:</b> BC060513	<b>Méthode de purification:</b> Purification par affinité contre l'antigène
<b>Taille:</b> 150ul , Concentration: 600 µg/ml by Nanodrop and 333 µg/ml by Bradford method using BSA as the standard;	<b>Identification du gène (NCBI):</b> 5340	<b>Dilutions recommandées:</b> WB 1:1000-1:6000 IHC 1:50-1:500 IF 1:50-1:500
<b>Hôte:</b> Lapin	<b>Nom complet:</b> plasminogen	
<b>Isotype:</b> IgG	<b>MW calculé:</b> 91 kDa	
	<b>MW observés:</b> 90-100 kDa	

## Applications

### Applications testées:

IF, IHC, WB, ELISA

### Demandes citées:

IHC

### Spécificité de l'espèce:

Humain

**Remarque-IHC: il est suggéré de démasquer l'antigène avec un tampon de TE buffer pH 9,0; (\*) À défaut, le démasquage de l'antigène peut être effectué avec un tampon citrate pH 6,0.**

### Contrôles positifs:

WB : plasma humain, cellules HepG2

IHC : tissu hépatique humain,

IF : cellules HepG2,

## Informations générales

Plasminogen is a secreted blood zymogen that is activated by proteolysis and converted to plasmin and angiostatin. Plasminogen plays an important role in fibrinolysis as well as wound healing, cell migration, tissue modeling and angiogenesis. Plasminogen is synthesized in the liver, and it circulates in the blood, with a half-life of 2.2 days. Plasminogen is the precursor of plasmin, which lyses fibrin clots to fibrin degradation products (FDP) and D-dimer; the conversion to active protease is mediated by tissue-type (tPA) and urokinase-type (uPA) plasminogen activators. Defects in plasminogen are likely a cause of thrombophilia and ligneous conjunctivitis.

## Publications notables

Autrice	Pubmed ID	Journal	Application
Takeshi Yamasaki	36933193	Int Immunol	IHC

## Stockage

### Stockage:

Stocker à -20°C. Stable pendant un an après l'expédition.

### Tampon de stockage:

PBS avec azoture de sodium à 0,02 % et glycérol à 50 % pH 7,3

L'aliquotage n'est pas nécessaire pour le stockage à -20C

\*\*\* Les 20ul contiennent 0,1% de BSA.

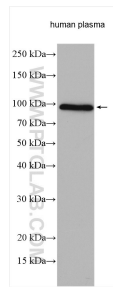
For technical support and original validation data for this product please contact:

T: 1 (888) 4PTGLAB (1-888-478-4522) (toll free in USA), or 1(312) 455-8498 (outside USA)

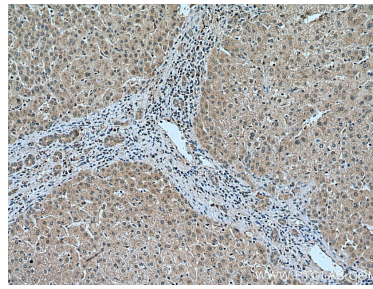
E: proteintech@ptglab.com  
W: ptglab.com

This product is exclusively available under Proteintech Group brand and is not available to purchase from any other manufacturer.

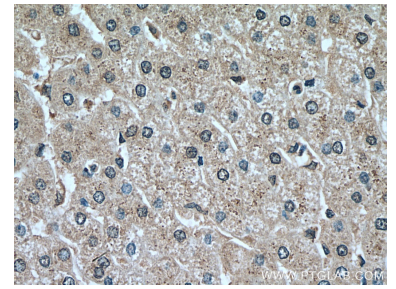
## Données de validation sélectionnées



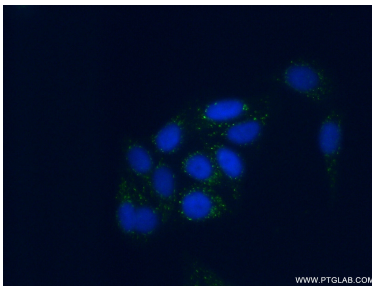
human plasma were subjected to SDS PAGE followed by western blot with 18300-1-AP (Plasminogen antibody) at dilution of 1:3000 incubated at room temperature for 1.5 hours.



Immunohistochemical analysis of paraffin-embedded human liver tissue slide using 18300-1-AP (Plasminogen antibody) at dilution of 1:200 (under 10x lens). Heat mediated antigen retrieval with Tris-EDTA buffer (pH 9.0).



Immunohistochemical analysis of paraffin-embedded human liver tissue slide using 18300-1-AP (Plasminogen antibody) at dilution of 1:200 (under 40x lens). Heat mediated antigen retrieval with Tris-EDTA buffer (pH 9.0).



Immunofluorescent analysis of (-20°C Ethanol) fixed HepG2 cells using 18300-1-AP (Plasminogen antibody) at dilution of 1:50 and Alexa Fluor 488-conjugated AffiniPure Goat Anti-Rabbit IgG(H+L).