

À des fins de recherche uniquement

Anticorps Polyclonal de lapin anti-Angiogenin



Numéro de catalogue: 18302-1-AP

6 Publications

Informations de base

Numéro de catalogue:
18302-1-AP

Taille:
150ul , Concentration: 500 µg/ml by Nanodrop and 300 µg/ml by Bradford method using BSA as the standard;

Hôte:
Lapin

Isotype:
IgG

Numéro d'acquisition GenBank:
BC054880

Identification du gène (NCBI):

Nom complet:
angiogenin, ribonuclease, RNase A family, 5

MW calculé

17 kDa

MW observés:

17 kDa

Méthode de purification:
Purification par affinité contre l'antigène

Dilutions recommandées:
WB 1:200-1:1000
IHC 1:50-1:500

Applications

Applications testées:
IHC, WB, ELISA

Demandes citées:
IHC, WB

Spécificité de l'espèce:
Humain, souris

Espèces citées:
Humain, rat, souris

Remarque-IHC: il est suggéré de démasquer l'antigène avec un tampon de TE buffer pH 9,0; (*) À défaut, le démasquage de l'antigène peut être effectué avec un tampon citrate pH 6,0.

Contrôles positifs:

WB : tissu hépatique de souris, tissu de lait humain
IHC : tissu hépatique humain,

Informations générales

Angiogenin (ANG), an angiogenic ribonuclease, is a member of the vertebrate-specific, secreted RNASE superfamily. Angiogenin, originally identified as a tumor angiogenic factor, was related with the growth and metastasis of numerous tumors. Angiogenin has been proposed as a permissive factor for angiogenesis induced by other angiogenic factors, including vascular endothelial growth factor (VEGF), basic fibroblast growth factor, acidic fibroblast growth factor, and epidermal growth factor. Angiogenin production and secretion may be stimulated by hypoxia. Increased angiogenin serum levels have been associated with the incidence and severity of several human tumors, including HCC. It is a 17 kDa precursor which is cleaved to generate the 14 kDa mature protein.

Publications notables

Autrice	Pubmed ID	Journal	Application
Hui Tang	33330033	Front Oncol	WB
Pei Zhang	31914639	FASEB J	WB
Minghui Sun	32569777	Life Sci	IHC

Stockage

Stockage:
Stocker à -20°C. Stable pendant un an après l'expédition.

Tampon de stockage:
PBS avec azoture de sodium à 0,02 % et glycérol à 50 % pH 7,3
L'aliquotage n'est pas nécessaire pour le stockage à -20C

*** Les 20ul contiennent 0,1% de BSA.

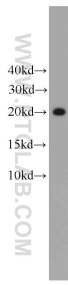
For technical support and original validation data for this product please contact:

T: 1 (888) 4PTGLAB (1-888-478-4522) (toll free in USA), or 1(312) 455-8498 (outside USA)

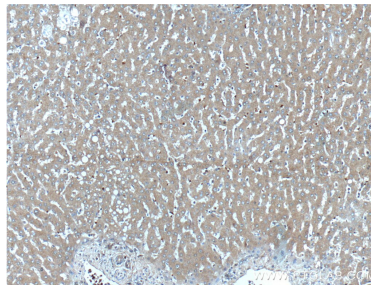
E: proteintech@ptglab.com
W: ptglab.com

This product is exclusively available under Proteintech Group brand and is not available to purchase from any other manufacturer.

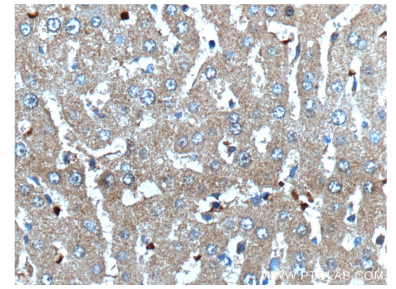
Données de validation sélectionnées



mouse liver tissue were subjected to SDS PAGE followed by western blot with 18302-1-AP (Angiogenin antibody) at dilution of 1:300 incubated at room temperature for 1.5 hours.



Immunohistochemical analysis of paraffin-embedded human liver tissue slide using 18302-1-AP (Angiogenin antibody at dilution of 1:100 (under 10x lens).



Immunohistochemical analysis of paraffin-embedded human liver tissue slide using 18302-1-AP (Angiogenin antibody at dilution of 1:100 (under 40x lens).