

À des fins de recherche uniquement

Anticorps Polyclonal de lapin anti-ITM2A



Numéro de catalogue: 18306-1-AP

6 Publications

Informations de base

Numéro de catalogue:

18306-1-AP

Taille:

150ul , Concentration: 300 µg/ml by Nanodrop;

Hôte:

Lapin

Isotype:

IgG

Numéro d'acquisition GenBank:

BC040437

Identification du gène (NCBI):

9452

Nom complet:

integral membrane protein 2A

MW calculé

30 kDa

MW observés:

32 kDa

Méthode de purification:

Purification par affinité contre l'antigène

Dilutions recommandées:

WB 1:5000-1:50000

Applications

Applications testées:

FC, WB, ELISA

Demandes citées:

FC, IF, IHC, WB

Spécificité de l'espèce:

Humain, rat, souris

Espèces citées:

Humain, souris

Contrôles positifs:

WB : cellules A549, cellules HepG2, cellules Jurkat

Informations générales

ITM2A, also named BRICD2A and E25A, is a member of type II integral membrane (ITM2) protein family. ITM2A expression is high in osteogenic and lymphoid tissues, while both ITM2B and ITM2C are expressed in brain. There are 5 articles specifically referring to this gene in PubMed. Proteins are expected to localize in various compartments (cytoplasm, integral to membrane). No phenotype has yet been reported to our knowledge: this gene's in vivo function is yet unknown.

Publications notables

Autrice	Pubmed ID	Journal	Application
Alicia A Cutler	35733848	iScience	IF
Céline Cegarra	35313913	Fluids Barriers CNS	IF
Makiko Kihara	25079563	PLoS One	IHC

Stockage

Stockage:

Stocker à -20°C. Stable pendant un an après l'expédition.

Tampon de stockage:

PBS avec azoture de sodium à 0,02 % et glycérol à 50 % pH 7,3

L'aliquotage n'est pas nécessaire pour le stockage à -20C

*** Les 20ul contiennent 0,1% de BSA.

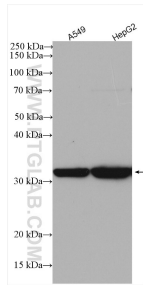
For technical support and original validation data for this product please contact:

T: 1 (888) 4PTGLAB (1-888-478-4522) (toll free in USA), or 1(312) 455-8498 (outside USA)

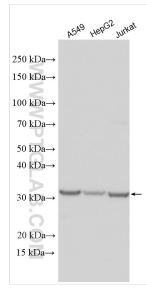
E: proteintech@ptglab.com
W: ptglab.com

This product is exclusively available under Proteintech Group brand and is not available to purchase from any other manufacturer.

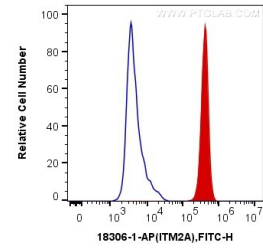
Données de validation sélectionnées



Various lysates were subjected to SDS PAGE followed by western blot with 18306-1-AP (ITM2A antibody) at dilution of 1:1000 incubated at room temperature for 1.5 hours.



Various lysates were subjected to SDS PAGE followed by western blot with 18306-1-AP (ITM2A antibody) at dilution of 1:15000 incubated at room temperature for 1.5 hours.



1X10⁶ Jurkat cells were intracellularly stained with 0.2 ug Anti-Human ITM2A (18306-1-AP) and CoraLite@488-Conjugated AffiniPure Goat Anti-Rabbit IgG(H+L) at dilution 1:1000 (red), or 0.2 ug Control Antibody. Cells were fixed with 4% PFA and permeabilized with Flow Cytometry Perm Buffer (PF00011-C).