

À des fins de recherche uniquement

Anticorps Polyclonal de lapin anti-CD61 / Integrin Beta 3



Numéro de catalogue: 18309-1-AP **31 Publications**

Informations de base

Numéro de catalogue:
18309-1-AP

Taille:
150ul , Concentration: 700 µg/ml by
Nanodrop;

Hôte:
Lapin

Isotype:
IgG

Numéro d'acquisition GenBank:
BC127667

Identification du gène (NCBI):
3690

Nom complet:
integrin, beta 3 (platelet glycoprotein
IIIa, antigen CD61)

MW calculé
87 kDa

MW observés:
100 kDa

Méthode de purification:
Purification par affinité contre
l'antigène

Dilutions recommandées:
WB 1:1000-1:4000
IP 0.5-4.0 ug for IP and 1:200-1:1000
for WB

Applications

Applications testées:
IP, WB, ELISA

Demandes citées:
FC, IF, IHC, IP, WB

Spécificité de l'espèce:
Humain, rat, souris

Espèces citées:
Humain, rat, souris, Hamster

Contrôles positifs:

WB : plaquettes de sang périphérique humain, tissu
splénique de rat, tissu splénique de souris

IP : tissu splénique de souris,

Informations générales

Integrin beta-3, also named as CD61 and GPIIIa, is a receptor for cytotactin, fibronectin, laminin, matrix metalloproteinase-2, osteopontin, osteomodulin, prothrombin, thrombospondin, vitronectin and von Willebrand factor. Integrin beta-3 recognize the sequence R-G-D in a wide array of ligands and the sequence H-H-L-G-G-G-A-K-Q-A-G-D-V in fibrinogen gamma chain. Following activation integrin beta-3 brings about platelet/platelet interaction through binding of soluble fibrinogen which leads to rapid platelet aggregation which physically plugs ruptured endothelial surface. In case of HIV-1 infection, the interaction with extracellular viral Tat protein seems to enhance angiogenesis in Kaposi's sarcoma lesions. Human integrin beta-3 has a calculated molecular weight of 87 kDa. As a result of glycosylation, the apparent molecular mass of integrin beta-3 is approximately 90-110 kDa.

Publications notables

Autrice	Pubmed ID	Journal	Application
Yujia Xu	32999280	Cell Death Dis	WB
Chao Cheng	36121292	Appl Immunohistochem Mol Morphol	IHC
Yueqi Li	30378153	J Cell Biochem	WB

Stockage

Stockage:

Stocker à -20°C. Stable pendant un an après l'expédition.

Tampon de stockage:

PBS avec azoture de sodium à 0,02 % et glycérol à 50 % pH 7,3

L'aliquotage n'est pas nécessaire pour le stockage à -20C

*** Les 20ul contiennent 0,1% de BSA.

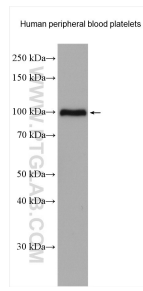
For technical support and original validation data for this product please contact:

T: 1 (888) 4PTGLAB (1-888-478-4522) (toll free
in USA), or 1(312) 455-8498 (outside USA)

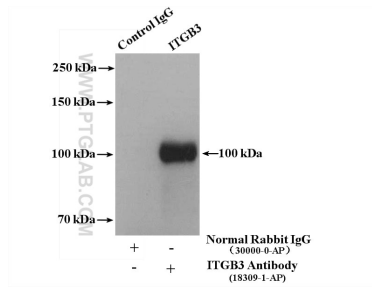
E: proteintech@ptglab.com
W: ptglab.com

This product is exclusively available under Proteintech Group brand and is not available to purchase from any other manufacturer.

Données de validation sélectionnées



Human peripheral blood platelets were subjected to SDS PAGE followed by western blot with 18309-1-AP (CD61 / Integrin Beta 3 antibody) at dilution of 1:2000 incubated at room temperature for 1.5 hours.



IP result of anti-CD61 / Integrin Beta 3 (IP:18309-1-AP, 4ug; Detection:18309-1-AP 1:300) with mouse spleen tissue lysate 5200 ug.