

À des fins de recherche uniquement

# Anticorps Polyclonal de lapin anti-G-CSFR



Numéro de catalogue: 18310-1-AP

2 Publications

## Informations de base

Numéro de catalogue:  
18310-1-AP

Taille:  
150ul , Concentration: 300 µg/ml by Nanodrop and 200 µg/ml by Bradford method using BSA as the standard;

Hôte:  
Lapin

Isotype:  
IgG

Numéro d'acquisition GenBank:  
BC053585

Identification du gène (NCBI):  
1441

Nom complet:  
colony stimulating factor 3 receptor (granulocyte)

MW calculé

95 kDa

MW observés:  
85 kDa

Méthode de purification:  
Purification par affinité contre l'antigène

Dilutions recommandées:  
WB 1:500-1:2000

## Applications

Applications testées:  
FC, WB, ELISA

Demandes citées:  
WB

Spécificité de l'espèce:  
Humain

Espèces citées:  
Humain, souris

Contrôles positifs:

WB : tissu placentaire humain,

## Informations générales

G-CSF-R, also named as CSF3R, CD114 and GCSFR is the receptor for colony stimulating factor 3, a cytokine that controls the production, differentiation, and function of granulocytes. It is a 130 kD to 150 kD glycoprotein single chain receptor which binds and activated by GCSF. In addition it may function in some adhesion or recognition events at the cell surface. It has been classified as a member of the hematopoietic (cytokine) receptor family, cytokine receptor class I, or the gp 130 related cytokine receptor family (although it does not apparently bind to gp 130). GCSF receptors can be found on neutrophils, myeloid leukemia cells that respond to GCSF, bone marrow cells of neutrophilic granulocyte lineage, and on placental trophoblasts. In addition, a soluble form is also expressed. Mutations in this gene are a cause of Kostmann syndrome, also known as severe congenital neutropenia.

## Publications notables

Autrice	Pubmed ID	Journal	Application
Mary P Udumula	34144215	Mol Metab	WB
Yang Cheng	30779348	J Cell Physiol	WB

## Stockage

Stockage:

Stocker à -20°C. Stable pendant un an après l'expédition.

Tampon de stockage:

PBS avec azoture de sodium à 0,02 % et glycérol à 50 % pH 7,3

L'aliquotage n'est pas nécessaire pour le stockage à -20C

\*\*\* Les 20ul contiennent 0,1% de BSA.

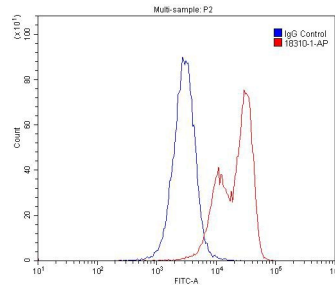
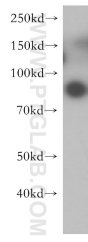
For technical support and original validation data for this product please contact:

T: 1 (888) 4PTGLAB (1-888-478-4522) (toll free in USA), or 1(312) 455-8498 (outside USA)

E: proteintech@ptglab.com  
W: ptglab.com

This product is exclusively available under Proteintech Group brand and is not available to purchase from any other manufacturer.

## Données de validation sélectionnées



human placenta tissue were subjected to SDS PAGE followed by western blot with 18310-1-AP (G-CSFR antibody) at dilution of 1:300 incubated at room temperature for 1.5 hours.

$1 \times 10^6$  U-937 cells were stained with 0.2ug G-CSFR antibody (18310-1-AP, red) and control antibody (blue). Fixed with 4% PFA blocked with 3% BSA (30 min). Alexa Fluor 488-conjugated AffiniPure Goat Anti-Rabbit IgG(H+L) with dilution 1:1500.