

À des fins de recherche uniquement

Anticorps Polyclonal de lapin anti-ERO1LB



Numéro de catalogue: 18312-1-AP

Informations de base

Numéro de catalogue: 18312-1-AP	Numéro d'acquisition GenBank: BC032823	Méthode de purification: Purification par affinité contre l'antigène
Taille: 150ul, Concentration: 800 µg/ml by Nanodrop and 447 µg/ml by Bradford method using BSA as the standard;	Identification du gène (NCBI): 56605	Dilutions recommandées: WB 1:500-1:3000 IHC 1:20-1:200
Hôte: Lapin	Nom complet: ERO1-like beta (<i>S. cerevisiae</i>)	
Isotype: IgG	MW calculé: 54 kDa	
	MW observés: 54 kDa	

Applications

Applications testées:

IHC, WB, ELISA

Spécificité de l'espèce:

Humain, rat, souris

Contrôles positifs:

WB : tissu cérébral humain, tissu cérébral de rat, tissu cérébral de souris

IHC : tissu pancréatique humain,

Remarque-IHC: il est suggéré de démasquer l'antigène avec un tampon de TE buffer pH 9,0; (*) À défaut, le démasquage de l'antigène peut être effectué avec un tampon citrate pH 6,0.

Informations générales

ERO1LB is an essential oxidoreductase that oxidizes proteins in the endoplasmic reticulum to produce disulfide bonds. It acts by oxidizing directly P4HB/PDI isomerase through a direct disulfide exchange. It does not act as a direct oxidant of folding substrate, but relies on P4HB/PDI to transfer oxidizing equivalent. Associates with ERP44 but not with GRP54, demonstrating that it does not oxidize all PDI related proteins and can discriminate between PDI and related proteins. Its reoxidation probably involves electron transfer to molecular oxygen via FAD. Glutathione may be required to regulate its activity in the endoplasmic reticulum. It may be responsible for a significant proportion of reactive oxygen species (ROS) in the being a source of oxidative stress. It is required for the folding of cell, thereby being a source of oxidative stress. This antibody has no cross reaction to ERO1L.

Stockage

Stockage:

Stocker à -20°C. Stable pendant un an après l'expédition.

Tampon de stockage:

PBS avec azotate de sodium à 0,02 % et glycérol à 50 % pH 7,3

L'aliquotage n'est pas nécessaire pour le stockage à -20C

*** Les 20ul contiennent 0,1% de BSA.

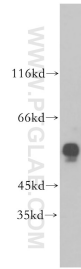
For technical support and original validation data for this product please contact:

T: 1 (888) 4PTGLAB (1-888-478-4522) (toll free in USA), or 1(312) 455-8498 (outside USA)

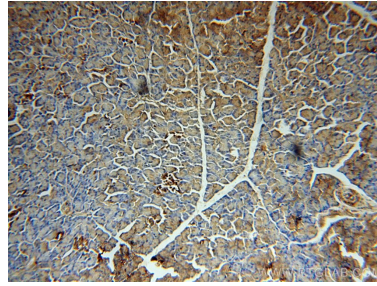
E: proteintech@ptglab.com
W: ptglab.com

This product is exclusively available under Proteintech Group brand and is not available to purchase from any other manufacturer.

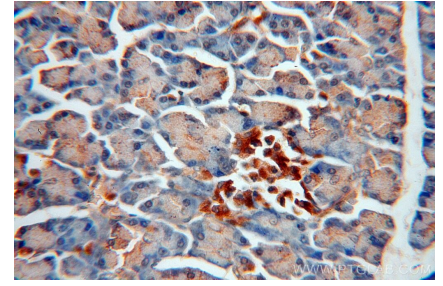
Données de validation sélectionnées



human brain tissue were subjected to SDS PAGE followed by western blot with 18312-1-AP (ERO1LB antibody) at dilution of 1:300 incubated at room temperature for 1.5 hours.



Immunohistochemical analysis of paraffin-embedded human pancreas using 18312-1-AP (ERO1LB antibody) at dilution of 1:100 (under 10x lens).



Immunohistochemical analysis of paraffin-embedded human pancreas using 18312-1-AP (ERO1LB antibody) at dilution of 1:100 (under 40x lens).