

À des fins de recherche uniquement

# Anticorps Polyclonal de lapin anti-ERO1L



Numéro de catalogue: 18313-1-AP

## Informations de base

<b>Numéro de catalogue:</b> 18313-1-AP	<b>Numéro d'acquisition GenBank:</b> BC008674	<b>Méthode de purification:</b> Purification par affinité contre l'antigène
<b>Taille:</b> 150ul , Concentration: 267 µg/ml by Bradford method using BSA as the standard;	<b>Identification du gène (NCBI):</b> 30001	<b>Dilutions recommandées:</b> IHC 1:20-1:200
<b>Hôte:</b> Lapin	<b>Nom complet:</b> ERO1-like ( <i>S. cerevisiae</i> )	
<b>Isotype:</b> IgG	<b>MW calculé:</b> 54 kDa	

## Applications

<b>Applications testées:</b> IHC, ELISA	<b>Contrôles positifs:</b> IHC : tissu pancréatique humain,
<b>Spécificité de l'espèce:</b> Humain, souris	

**Remarque-IHC: il est suggéré de démasquer l'antigène avec un tampon de TE buffer pH 9,0; (\*) À défaut, le démasquage de l'antigène peut être effectué avec un tampon citrate pH 6,0.**

## Informations générales

ERO1L, also named as ERO1-alpha, is an essential oxidoreductase that oxidizes proteins in the endoplasmic reticulum to produce disulfide bonds. It acts by oxidizing directly P4HB/PDI isomerase through a direct disulfide exchange. It does not act as a direct oxidant of folding substrate, but relies on P4HB/PDI to transfer oxidizing equivalent. Associates with ERP44 but not with GRP54, demonstrating that it does not oxidize all PDI related proteins and can discriminate between PDI and related proteins. Its reoxidation probably involves electron transfer to molecular oxygen via FAD. Glutathione may be required to regulate its activity in the endoplasmic reticulum. It may be responsible for a significant proportion of reactive oxygen species (ROS) in the cell, thereby being a source of oxidative stress. It is required for the folding of immunoglobulin proteins. Responsible for the release of the unfolded cholera toxin from reduced P4HB/PDI in case of infection by *V. cholerae*, thereby playing a role in retrotranslocation of the toxin. This antibody has no cross reaction to ERO1L.

## Stockage

**Stockage:**  
Stocker à -20°C. Stable pendant un an après l'expédition.  
**Tampon de stockage:**  
PBS avec azoture de sodium à 0,02 % et glycérol à 50 % pH 7,3  
L'aliquotage n'est pas nécessaire pour le stockage à -20C

\*\*\* Les 20ul contiennent 0,1% de BSA.

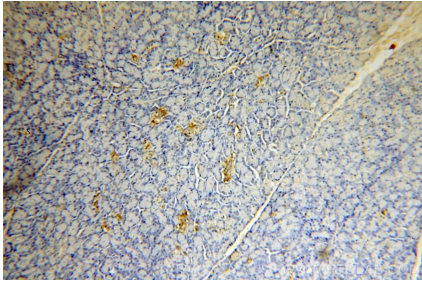
For technical support and original validation data for this product please contact:

T: 1 (888) 4PTGLAB (1-888-478-4522) (toll free in USA), or 1(312) 455-8498 (outside USA)

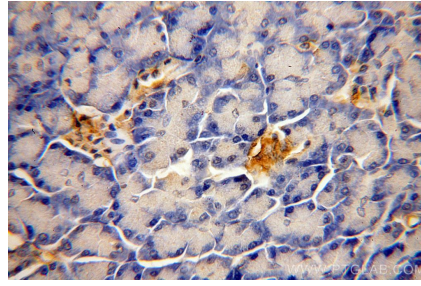
E: proteintech@ptglab.com  
W: ptglab.com

This product is exclusively available under Proteintech Group brand and is not available to purchase from any other manufacturer.

## Données de validation sélectionnées



Immunohistochemical analysis of paraffin-embedded human pancreas using 18313-1-AP (ERO1L antibody) at dilution of 1:50 (under 10x lens).



Immunohistochemical analysis of paraffin-embedded human pancreas using 18313-1-AP (ERO1L antibody) at dilution of 1:50 (under 40x lens).