

À des fins de recherche uniquement

Anticorps Polyclonal de lapin anti-NHE8



Numéro de catalogue: 18318-1-AP

Phare

Informations de base

Numéro de catalogue:
18318-1-AP

Taille:
150ul, Concentration: 400 µg/ml by Nanodrop and 267 µg/ml by Bradford method using BSA as the standard;

Hôte:
Lapin

Isotype:
IgG

Immunogen Catalog Number:
AG13111

Numéro d'acquisition GenBank:
BC112213

Identification du gène (NCBI):
23315

Nom complet:
solute carrier family 9 (sodium/hydrogen exchanger), member 8

MW calculé
581 aa, 65 kDa

MW observés:
70-85 kDa

Méthode de purification:
Purification par affinité contre l'antigène

Dilutions recommandées:
WB 1:500-1:2000
IHC 1:50-1:500
IF 1:20-1:200

Applications

Applications testées:
IF, IHC, WB, ELISA

Spécificité de l'espèce:
Humain, rat, souris

Remarque-IHC: il est suggéré de démasquer l'antigène avec un tampon de TE buffer pH 9.0; (*) À défaut, le démasquage de l'antigène peut être effectué avec un tampon citrate pH 6.0.

Contrôles positifs:

WB : cellules HEK-293, tissu de côlon de souris, tissu hépatique de souris, tissu rénal de souris, tissu testiculaire de souris

IHC : tissu rénal humain, tissu cutané humain, tissu de côlon humain, tissu ovarien humain, tissu placentaire humain, tissu pulmonaire humain, tissu testiculaire de souris, tissu testiculaire humain

IF : cellules HEK-293,

Informations générales

NHE8, encoded by SLC9A8, is a member of sodium/hydrogen exchanger family which are transmembrane proteins that mediate the electroneutral exchange of sodium (Na) for hydrogen (H) and get involved in intracellular pH homeostasis, cell volume regulation, acid-base regulation, and so on. NHE8 has a broad tissue distribution, with relatively high abundance in the gastrointestinal tract. It has been reported that NHE8 expression differs among different regions in the stomach, very low in nonglandular region whereas very high in glandular region. The predicted molecular weight of NHE8 is 64-65 kDa, while its glycosylated form often migrates around 70-85 kDa.

Stockage

Stockage:

Stocker à -20°C. Stable pendant un an après l'expédition.

Tampon de stockage:

PBS avec azotate de sodium à 0,02 % et glycérol à 50 % pH 7,3

L'aliquotage n'est pas nécessaire pour le stockage à -20C

*** Les 20ul contiennent 0,1% de BSA.

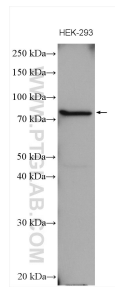
For technical support and original validation data for this product please contact:

T: 1 (888) 4PTGLAB (1-888-478-4522) (toll free in USA), or 1(312) 455-8498 (outside USA)

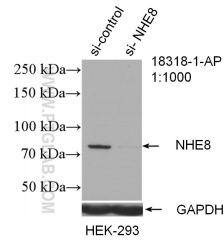
E: proteintech@ptglab.com
W: ptglab.com

This product is exclusively available under Proteintech Group brand and is not available to purchase from any other manufacturer.

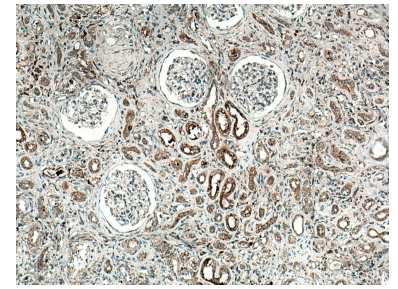
Données de validation sélectionnées



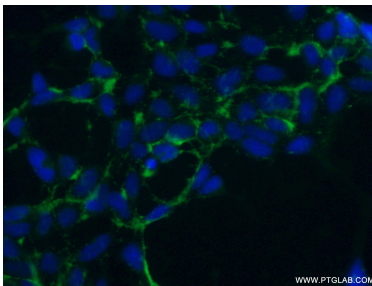
HEK-293 cells were subjected to SDS PAGE followed by western blot with 18318-1-AP (NHE8 antibody) at dilution of 1:1000 incubated at room temperature for 1.5 hours.



WB result of NHE8 antibody (18318-1-AP; 1:1000; incubated at room temperature for 1.5 hours) with sh-Control and sh-NHE8 transfected HEK-293 cells.



Immunohistochemical analysis of paraffin-embedded human kidney tissue slide using 18318-1-AP (NHE8 antibody) at dilution of 1:200 (under 10x lens). Heat mediated antigen retrieval with Tris-EDTA buffer (pH 9.0).



Immunofluorescent analysis of (-20°C Ethanol) fixed HEK-293 cells using 18318-1-AP (NHE8 antibody) at dilution of 1:50 and Alexa Fluor 488-conjugated AffiniPure Goat Anti-Rabbit IgG(H+L).