

À des fins de recherche uniquement

Anticorps Polyclonal de lapin anti-DTX1



Numéro de catalogue: 18350-1-AP

1 Publications

Informations de base

Numéro de catalogue:

18350-1-AP

Taille:

150ul , Concentration: 650 µg/ml by Nanodrop and 353 µg/ml by Bradford method using BSA as the standard;

Hôte:

Lapin

Isotype:

IgG

Immunogen Catalog Number:

AG13172

Numéro d'acquisition GenBank:

BC048216

Identification du gène (NCBI):

1840

Nom complet:

deltex homolog 1 (Drosophila)

MW calculé

620 aa, 67 kDa

MW observés:

67 kDa

Méthode de purification:

Purification par affinité contre l'antigène

Dilutions recommandées:

WB 1:500-1:1000

IHC 1:50-1:500

IF 1:50-1:200

Applications

Applications testées:

IF, IHC, WB, ELISA

Demandes citées:

WB

Spécificité de l'espèce:

Humain, rat, souris

Espèces citées:

Humain

Remarque-IHC: il est suggéré de démasquer l'antigène avec un tampon de TE buffer pH 9,0; (*) A défaut, 'le démasquage de l'antigène peut être 'effectué avec un tampon citrate pH 6,0.

Contrôles positifs:

WB : cellules Daudi, cellules A375

IHC : tissu de côlon humain, tissu testiculaire humain

IF : tissu d'épithélium olfactif de souris,

Informations générales

Deltex homolog 1 (E3 ubiquitin-protein ligase DTX1) is a regulator of Notch signaling, a signaling pathway involved in cell-cell communications that regulates a broad spectrum of cell-fate determinations. Probably acts both as a positive and negative regulator of Notch, depending on the developmental and cell context. Functions as an ubiquitin ligase protein in vivo, mediating ubiquitination and promoting degradation of MEK1, suggesting that it may regulate the Notch pathway via some ubiquitin ligase activity. DTX1 is conserved from Drosophila, and is expressed in a wide array of tissues, particularly in the central nervous system, testes, and endothelial cells, mainly colocalized with Notch1. It contains a RING-type zinc finger and 2 WWE domains.

Publications notables

Autrice	Pubmed ID	Journal	Application
Xin-Yu Ding	31854042	Cancer Sci	WB

Stockage

Stockage:

Stocker à -20°C. Stable pendant un an après l'expédition.

Tampon de stockage:

PBS avec azoture de sodium à 0,02 % et glycérol à 50 % pH 7,3

L'aliquotage n'est pas nécessaire pour le stockage à -20C

*** Les 20ul contiennent 0,1% de BSA.

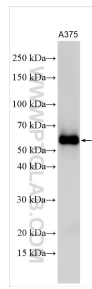
For technical support and original validation data for this product please contact:

T: 1 (888) 4PTGLAB (1-888-478-4522) (toll free in USA), or 1(312) 455-8498 (outside USA)

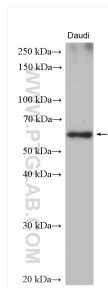
E: proteintech@ptglab.com
W: ptglab.com

This product is exclusively available under Proteintech Group brand and is not available to purchase from any other manufacturer.

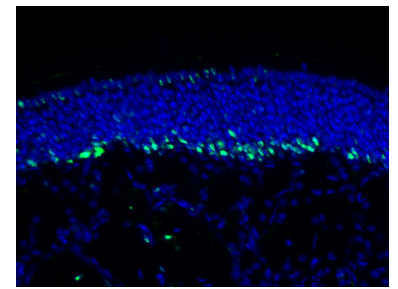
Données de validation sélectionnées



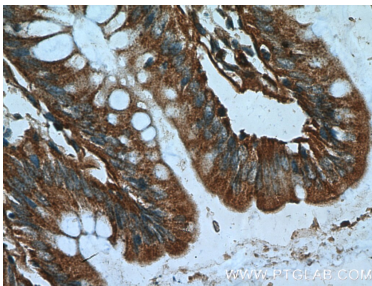
Various lysates were subjected to SDS PAGE followed by western blot with 18350-1-AP (DTX1 antibody) at dilution of 1:2000 incubated at room temperature for 1.5 hours.



Daudi cells were subjected to SDS PAGE followed by western blot with 18350-1-AP (DTX1 antibody) at dilution of 1:500 incubated at room temperature for 1.5 hours.



Fluorescent IHC on 1%PLP fixed frozen mouse olfactory epithelium tissue of DTX1 antibody (18350-1-AP). Basal cell staining as expected with Sus cell staining on the apical layer. By Dr. Brian Lin (Schwob Lab).



Immunohistochemical analysis of paraffin-embedded human colon tissue slide using 18350-1-AP (DTX1 Antibody) at dilution of 1:200 (under 40x lens).