

À des fins de recherche uniquement

Anticorps Polyclonal de lapin anti-PLD1



Numéro de catalogue: 18355-1-AP

1 Publications

Informations de base

Numéro de catalogue:
18355-1-AP

Taille:
150ul, Concentration: 307 µg/ml by
Bradford method using BSA as the
standard;

Hôte:
Lapin

Isotype:
IgG

Immunogen Catalog Number:
AG13227

Numéro d'acquisition GenBank:
BC068976

Identification du gène (NCBI):
5337

Nom complet:
phospholipase D1,
phosphatidylcholine-specific

MW calculé
1074 aa, 124 kDa

MW observés:
120 kDa

Méthode de purification:
Purification par affinité contre
l'antigène

Dilutions recommandées:
WB 1:500-1:2000
IP 0.5-4.0 ug for IP and 1:500-1:1000
for WB
IF 1:20-1:200

Applications

Applications testées:
IF, IP, WB, ELISA

Demandes citées:
IF, WB

Spécificité de l'espèce:
Humain, rat, souris

Espèces citées:
Humain

Contrôles positifs:

WB : cellules HeLa,

IP : cellules HeLa,

IF : cellules HeLa,

Informations générales

PLD1(Phospholipase D1) belongs to the phospholipase D family. It is implicated in the release process of a variety of hormones, most likely at a late stage of exocytosis through the production of lipids that are essential for the fusion process and seems to be also essential for fast neurotransmitter release. PLD1 is primarily localized in vesicular structures such as endosomes, lysosomes and autophagosomes.

Publications notables

Autrice	Pubmed ID	Journal	Application
Yoon Mee-Sup MS	22024166	J Cell Biol	WB,IF

Stockage

Stockage:

Stocker à -20°C. Stable pendant un an après l'expédition.

Tampon de stockage:

PBS avec azoture de sodium à 0,02 % et glycérol à 50 % pH 7,3

L'aliquotage n'est pas nécessaire pour le stockage à -20C

*** Les 20ul contiennent 0,1% de BSA.

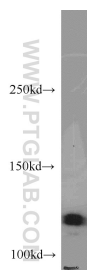
For technical support and original validation data for this product please contact:

T: 1 (888) 4PTGLAB (1-888-478-4522) (toll free
in USA), or 1(312) 455-8498 (outside USA)

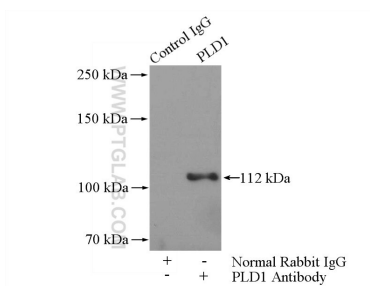
E: proteintech@ptglab.com
W: ptglab.com

This product is exclusively available under Proteintech Group brand and is not available to purchase from any other manufacturer.

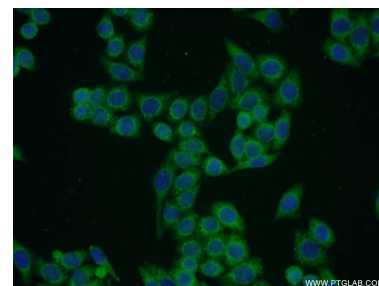
Données de validation sélectionnées



HeLa cells were subjected to SDS PAGE followed by western blot with 18355-1-AP (PLD1 antibody) at dilution of 1:500 incubated at room temperature for 1.5 hours.



IP Result of anti-PLD1 (IP:18355-1-AP, 4ug; Detection:18355-1-AP 1:500) with HeLa cells lysate 1200ug.



Immunofluorescent analysis of HeLa cells using 18355-1-AP (PLD1 antibody) at dilution of 1:50 and Alexa Fluor 488-conjugated AffiniPure Goat Anti-Rabbit IgG(H+L).