

À des fins de recherche uniquement

# Anticorps Polyclonal de lapin anti-FASTKD3



Numéro de catalogue: 18392-1-AP

Phare

1 Publications

## Informations de base

Numéro de catalogue:  
18392-1-AP

Taille:  
150ul, Concentration: 300 µg/ml by  
Nanodrop and 193 µg/ml by Bradford  
method using BSA as the standard;

Hôte:  
Lapin

Isotype:  
IgG

Immunogen Catalog Number:  
AG13083

Numéro d'acquisition GenBank:  
BC001295

Identification du gène (NCBI):  
79072

Nom complet:  
FAST kinase domains 3

MW calculé  
76 kDa

MW observés:  
70 kDa

Méthode de purification:  
Purification par affinité contre  
l'antigène

Dilutions recommandées:  
WB 1:200-1:1000  
IHC 1:50-1:500  
IF 1:20-1:200

## Applications

Applications testées:  
IF, IHC, WB, ELISA

Demandes citées:  
WB

Spécificité de l'espèce:  
Humain

Espèces citées:  
Humain

**Remarque-IHC: il est suggéré de démasquer  
l'antigène avec un tampon de TE buffer pH  
9,0; (\*) A défaut, 'le démasquage de  
l'antigène peut être 'effectué avec un  
tampon citrate pH 6,0.**

Contrôles positifs:

WB : cellules HepG2, HeLa

IHC : tissu de cancer du sein humain,

IF : cellules transfectées, cellules HeLa, cellules HepG2

## Informations générales

FAST kinase domain-containing protein 3 (FASTKD3) belongs to FASTKD family. FASTKD3 is an essential component of mitochondrial respiration that may modulate energy balance in cells exposed to adverse conditions by functionally coupling mitochondrial protein synthesis to respiration. The expression of endogenous FASTKD3 is very weak. This antibody detects the c-terminal of FASTKD3.

## Publications notables

Autrice	Pubmed ID	Journal	Application
Erik Boehm	27789713	J Biol Chem	WB

## Stockage

Stockage:

Stocker à -20°C. Stable pendant un an après l'expédition.

Tampon de stockage:

PBS avec azoture de sodium à 0,02 % et glycérol à 50 % pH 7,3

L'aliquotage n'est pas nécessaire pour le stockage à -20C

\*\*\* Les 20ul contiennent 0,1% de BSA.

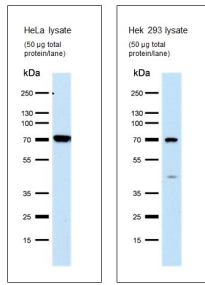
For technical support and original validation data for this product please contact:

T: 1 (888) 4PTGLAB (1-888-478-4522) (toll free  
in USA), or 1(312) 455-8498 (outside USA)

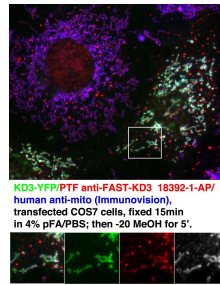
E: proteintech@ptglab.com  
W: ptglab.com

This product is exclusively available under Proteintech Group brand and is not available to purchase from any other manufacturer.

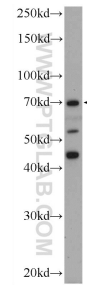
## Données de validation sélectionnées



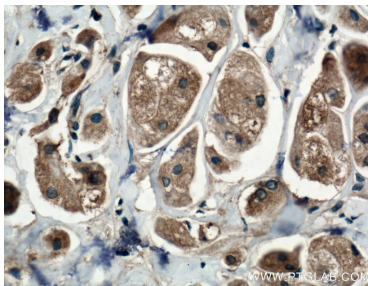
WB result of FASTKD3 antibody (18392-1-AP, 1:200) with HeLa and 293 cell lysate by Maciej Szewczyk University of Warsaw.



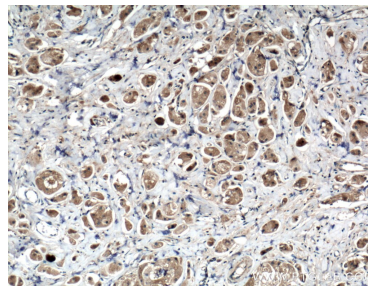
IF result of anti-FASTKD3 (18392-1-AP, 1:200) with transfected COS7 cell by Dr. Nancy Kedersha.



HepG2 cells were subjected to SDS PAGE followed by western blot with 18392-1-AP (FASTKD3 Antibody) at dilution of 1:300 incubated at 4 degree celsius over night.



Immunohistochemical analysis of paraffin-embedded human breast cancer tissue slide using 18392-1-AP (FASTKD3 antibody) at dilution of 1:100 (under 10x lens. Heat mediated antigen retrieval with Tris-EDTA buffer (pH 9.0).



Immunohistochemical analysis of paraffin-embedded human breast cancer tissue slide using 18392-1-AP (FASTKD3 antibody) at dilution of 1:100 (under 40x lens. Heat mediated antigen retrieval with Tris-EDTA buffer (pH 9.0).