

À des fins de recherche uniquement

# Anticorps Polyclonal de lapin anti-PSAP



Numéro de catalogue: 18396-1-AP **Phare**

## Informations de base

<b>Numéro de catalogue:</b> 18396-1-AP	<b>Numéro d'acquisition GenBank:</b> BC001503	<b>Méthode de purification:</b> Purification par affinité contre l'antigène
<b>Taille:</b> 150ul , Concentration: 800 µg/ml by Nanodrop and 393 µg/ml by Bradford method using BSA as the standard;	<b>Identification du gène (NCBI):</b> 5660	<b>Dilutions recommandées:</b> WB 1:500-1:2000 IHC 1:20-1:200 IF 1:50-1:500
<b>Hôte:</b> Lapin	<b>Nom complet:</b> prosaposin	
<b>Isotype:</b> IgG	<b>MW calculé:</b> 58 kDa	
<b>Immunogen Catalog Number:</b> AG13263	<b>MW observés:</b> 65 kDa, 70 kDa	

## Applications

### Applications testées:

IF, IHC, WB, ELISA

### Spécificité de l'espèce:

Humain, souris

**Remarque-IHC: il est suggéré de démasquer l'antigène avec un tampon de TE buffer pH 9,0; (\*) À défaut, 'le démasquage de l'antigène peut être 'effectué avec un tampon citrate pH 6,0.**

### Contrôles positifs:

WB : tissu hépatique de souris, cellules HepG2, tissu hépatique humain

IHC : tissu de cancer du foie humain,

IF : cellules HepG2,

## Informations générales

The PSAP gene encodes prosaposin, a precursor of four small nonenzymatic glycoproteins termed 'sphingolipid activator proteins' (SAPs) that assist in the lysosomal hydrolysis of sphingolipids. After proteolytic processing of the prosaposin protein, these 4 released polypeptides are functional activators. Saposin A was encoded by residues 60 to 143 of PSAP, saposin B by 195 to 275, saposin C by 311 to 390, and saposin D by 405 to 487. There are four 12-14 kDa heatstable glycoproteins. This antibody should recognize saposin A.

## Stockage

### Stockage:

Stocker à -20°C. Stable pendant un an après l'expédition.

### Tampon de stockage:

PBS avec azoture de sodium à 0,02 % et glycérol à 50 % pH 7,3

L'aliquotage n'est pas nécessaire pour le stockage à -20C

\*\*\* Les 20ul contiennent 0,1% de BSA.

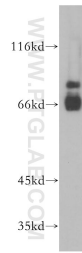
For technical support and original validation data for this product please contact:

T: 1 (888) 4PTGLAB (1-888-478-4522) (toll free in USA), or 1(312) 455-8498 (outside USA)

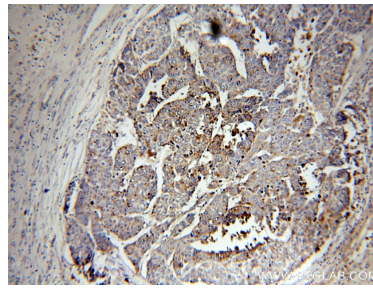
E: [proteintech@ptglab.com](mailto:proteintech@ptglab.com)  
W: [ptglab.com](http://ptglab.com)

This product is exclusively available under Proteintech Group brand and is not available to purchase from any other manufacturer.

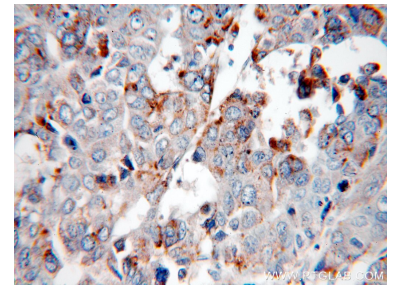
## Données de validation sélectionnées



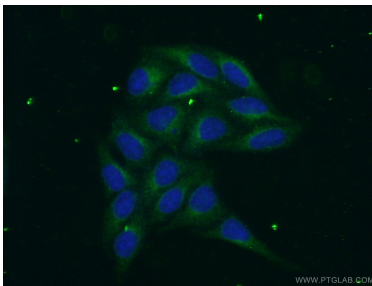
mouse liver tissue were subjected to SDS PAGE followed by western blot with 18396-1-AP (PSAP antibody) at dilution of 1:500 incubated at room temperature for 1.5 hours.



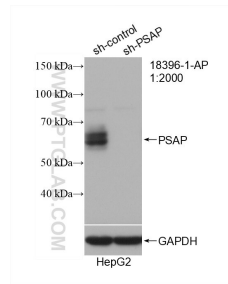
Immunohistochemical analysis of paraffin-embedded human liver cancer using 18396-1-AP (PSAP antibody) at dilution of 1:100 (under 10x lens).



Immunohistochemical analysis of paraffin-embedded human liver cancer using 18396-1-AP (PSAP antibody) at dilution of 1:100 (under 40x lens).



Immunofluorescent analysis of (-20°C Ethanol) fixed HepG2 cells using 18396-1-AP (PSAP antibody) at dilution of 1:50 and Alexa Fluor 488-conjugated AffiniPure Goat Anti-Rabbit IgG(H+L).



WB result of PSAP antibody (18396-1-AP; 1:2000; incubated at room temperature for 1.5 hours) with sh-Control and sh-PSAP transfected HepG2 cells.