

À des fins de recherche uniquement

Anticorps Polyclonal de lapin anti-TOMM40



Numéro de catalogue: 18409-1-AP

Phare

75 Publications

Informations de base

Numéro de catalogue:

18409-1-AP

Taille:

150ul, Concentration: 900 µg/ml by Nanodrop;

Hôte:

Lapin

Isotype:

IgG

Immunogen Catalog Number:

AG13065

Numéro d'acquisition GenBank:

BC017224

Identification du gène (NCBI):

10452

Nom complet:

translocase of outer mitochondrial membrane 40 homolog (yeast)

MW calculé

38 kDa

MW observés:

38 kDa

Méthode de purification:

Purification par affinité contre l'antigène

Dilutions recommandées:

WB 1:2000-1:16000

IP 0.5-4.0 µg for IP and 1:500-1:2000 for WB

IHC 1:50-1:500

IF 1:200-1:800

Applications

Applications testées:

FC, IF, IHC, IP, WB, ELISA

Demandes citées:

CoIP, IF, IHC, IP, WB

Spécificité de l'espèce:

Humain, rat, souris

Espèces citées:

bovin, Humain, rat, singe, souris

Remarque-IHC: il est suggéré de démasquer l'antigène avec un tampon de TE buffer pH 9,0; (*) À défaut, le démasquage de l'antigène peut être effectué avec un tampon citrate pH 6,0.

Contrôles positifs:

WB : cellules HEK-293, cellules HeLa, cellules HepG2, tissu cérébral humain, tissu rénal de rat, tissu rénal de souris

IP : tissu hépatique de souris,

IHC : tissu hépatique humain, tissu cardiaque de souris, tissu cardiaque humain, tissu rénal humain

IF : cellules HepG2, cellules HeLa

Informations générales

The translocase of outer mitochondria membrane 40 (TOMM40, also known as TOM40), located in the center of the TOM complex, is a channel-forming subunit of translocase. It can facilitate the fluid movement of preproteins into the mitochondria by associating with TOMM20. TOMM40 plays a role in the assembly of the mitochondrial membrane respiratory chain NADH dehydrogenase (Complex I) by forming a complex with BCAP31 and mediating the translocation of Complex I components from the cytosol to the mitochondria (PMID: 31206022). TOMM40 has been reported to be associated with late-onset neurodegenerative diseases such as Alzheimer's disease and Parkinson's disease.

Publications notables

Autrice	Pubmed ID	Journal	Application
Emi Ogasawara	32946932	Pharmacol Res	WB
Christopher Lowden	34525369	Cell Rep	WB
Nathalie Dorison	32933822	Mol Genet Metab	IF

Stockage

Stockage:

Stocker à -20°C. Stable pendant un an après l'expédition.

Tampon de stockage:

PBS avec azoture de sodium à 0,02 % et glycérol à 50 % pH 7,3

L'aliquotage n'est pas nécessaire pour le stockage à -20C

*** Les 20ul contiennent 0,1% de BSA.

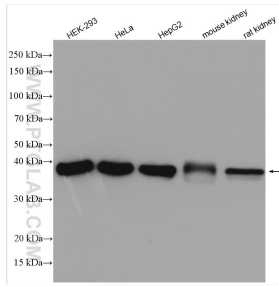
For technical support and original validation data for this product please contact:

T: 1 (888) 4PTGLAB (1-888-478-4522) (toll free in USA), or 1(312) 455-8498 (outside USA)

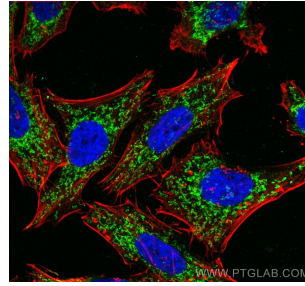
E: proteintech@ptglab.com
W: ptglab.com

This product is exclusively available under Proteintech Group brand and is not available to purchase from any other manufacturer.

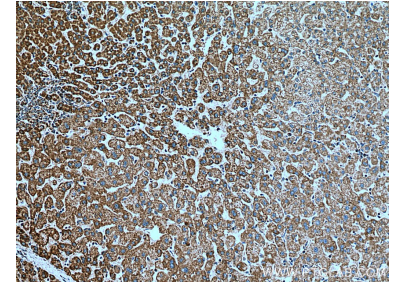
Données de validation sélectionnées



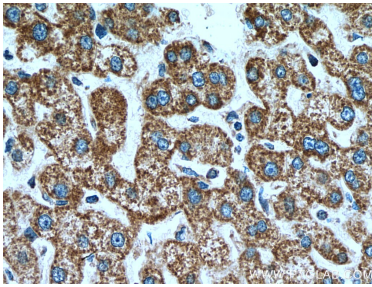
Various lysates were subjected to SDS PAGE followed by western blot with 18409-1-AP (TOMM40 antibody) at dilution of 1:8000 incubated at room temperature for 1.5 hours.



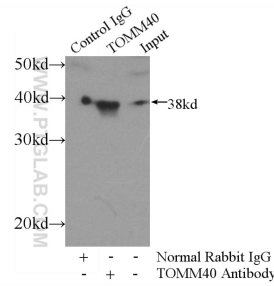
Immunofluorescent analysis of (4% PFA) fixed HepG2 cells using TOMM40 antibody (18409-1-AP) at dilution of 1:400 and CoraLite® 488-Conjugated AffiniPure Goat Anti-Rabbit IgG(H+L), (CL594-Phalloidin, red).



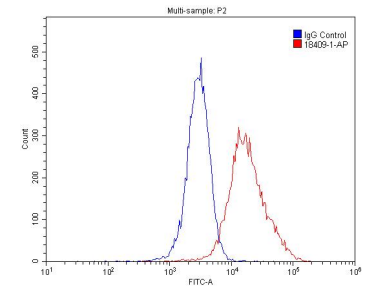
Immunohistochemical analysis of paraffin-embedded human liver tissue slide using 18409-1-AP (TOMM40 antibody) at dilution of 1:200 (under 10x lens). Heat mediated antigen retrieval with Tris-EDTA buffer (pH 9.0).



Immunohistochemical analysis of paraffin-embedded human liver tissue slide using 18409-1-AP (TOMM40 antibody) at dilution of 1:200 (under 40x lens). Heat mediated antigen retrieval with Tris-EDTA buffer (pH 9.0).



IP Result of anti-TOMM40 (IP:18409-1-AP, 4ug; Detection:18409-1-AP 1:1000) with mouse liver tissue lysate 4000ug.



1×10^6 HepG2 cells were stained with .2ug TOMM40 antibody (18409-1-AP, red) and control antibody (blue). Cells were fixed with 4% PFA and permeabilized with 0.1% Triton X-100. Alexa Fluor 488-conjugated AffiniPure Goat Anti-Rabbit IgG(H+L) with dilution 1:1500.