

À des fins de recherche uniquement

# Anticorps Polyclonal de lapin anti-SPATA5L1



Numéro de catalogue: 18414-1-AP

## Informations de base

<b>Numéro de catalogue:</b> 18414-1-AP	<b>Numéro d'acquisition GenBank:</b> BC000981	<b>Méthode de purification:</b> Purification par affinité contre l'antigène
<b>Taille:</b> 150ul , Concentration: 713 µg/ml by Bradford method using BSA as the standard;	<b>Identification du gène (NCBI):</b> 79029	<b>Dilutions recommandées:</b> WB 1:500-1:1000
<b>Hôte:</b> Lapin	<b>Nom complet:</b> spermatogenesis associated 5-like 1	
<b>Isotype:</b> IgG	<b>MW calculé:</b> 81 kDa	
<b>Immunogen Catalog Number:</b> AG13269	<b>MW observés:</b> 81 kDa	

## Applications

<b>Applications testées:</b> WB, ELISA	<b>Contrôles positifs:</b> WB : cellules MCF-7, cellules HeLa, cellules Jurkat, cellules K-562
<b>Spécificité de l'espèce:</b> Humain	

## Informations générales

SPATA5L1 (Spermatogenesis-associated protein 5-like protein 1) belongs to the AAA+ATPase protein superfamily. A full-length SPATA5L1 transcript and a short SPATA5L1 variant can be produced in human by alternative splicing. Bi-allelic SPATA5L1 variants lead to a human disease characterized by sensorineural hearing loss with or without a nonprogressive mixed neurodevelopmental phenotype. And immunofluorescence analysis in rat hippocampal neurons demonstrated that SPATA5L1 was located in neuronal and glial cell nuclei, with more prominent expression in neurons (PubMed:34626583). SPATA5L1 also has 3 isoforms.

## Stockage

**Stockage:**  
Stocker à -20°C. Stable pendant un an après l'expédition.  
**Tampon de stockage:**  
PBS avec azoture de sodium à 0,02 % et glycérol à 50 % pH 7,3  
L'aliquotage n'est pas nécessaire pour le stockage à -20C

\*\*\* Les 20ul contiennent 0,1% de BSA.

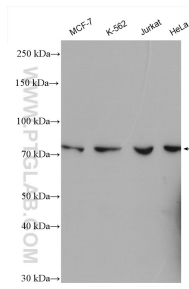
For technical support and original validation data for this product please contact:

T: 1 (888) 4PTGLAB (1-888-478-4522) (toll free in USA), or 1(312) 455-8498 (outside USA)

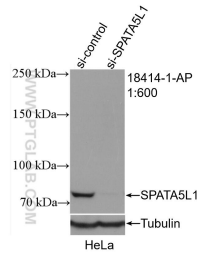
E: [proteintech@ptglab.com](mailto:proteintech@ptglab.com)  
W: [ptglab.com](http://ptglab.com)

This product is exclusively available under Proteintech Group brand and is not available to purchase from any other manufacturer.

## Données de validation sélectionnées



Various lysates were subjected to SDS PAGE followed by western blot with 18414-1-AP (SPATA5L1 antibody) at dilution of 1:500 incubated at room temperature for 1.5 hours.



WB result of SPATA5L1 antibody (18414-1-AP; 1:600; incubated at room temperature for 1.5 hours) with sh-Control and sh-SPATA5L1 transfected HeLa cells.