

À des fins de recherche uniquement

Anticorps Polyclonal de lapin anti-IGFBP4



Numéro de catalogue: 18500-1-AP

7 Publications

Informations de base

Numéro de catalogue: 18500-1-AP	Numéro d'acquisition GenBank: BC016041	Méthode de purification: Purification par affinité contre l'antigène
Taille: 150ul, Concentration: 400 µg/ml by Nanodrop and 300 µg/ml by Bradford method using BSA as the standard;	Identification du gène (NCBI): 3487	Dilutions recommandées: WB 1:500-1:3000 IHC 1:50-1:500 IF 1:10-1:100
Hôte: Lapin	Nom complet: insulin-like growth factor binding protein 4	
Isotype: IgG	MW calculé: 28 kDa	
Immunogen Catalog Number: AG13347	MW observés: 28-40 kDa	

Applications

Applications testées:

IF, IHC, WB, ELISA

Demandes citées:

IF, IHC, WB

Spécificité de l'espèce:

Humain, rat

Espèces citées:

Humain, poulet

Remarque-IHC: il est suggéré de démasquer l'antigène avec un tampon de TE buffer pH 9,0; (*) A défaut, 'le démasquage de l'antigène peut être effectué avec un tampon citrate pH 6,0.

Contrôles positifs:

WB : cellules C6,

IHC : tissu hépatique humain, tissu de côlon humain

IF : cellules C6,

Informations générales

IGFBP4, also named as IBP4, is a 258 amino acid protein, which contains one IGFBP N-terminal domain and one thyroglobulin type-1 domain. IGFBP4 is the smallest member of the insulin-like growth factor binding protein family (IGFBP). It is a hepatic protein that plays a role in modulating the activity and bioavailability of IGF-I. The expression of IGFBP4 was found to increase under conditions of hypoxia. IGFBP4 is highly expressed in adipocytes and osteoblasts and is inhibitory of IGFs in vitro. (PMID: 28938423, PMID: 34646401). IGFBP4 is a secreted protein and calculated molecular weight is 28 kDa.

Publications notables

Autrice	Pubmed ID	Journal	Application
Wenwen Guo	34888242	Front Oncol	IHC
Cynthia Hajal	34162553	Sci Adv	IF
Jie Yang	28734787	Cell Signal	WB

Stockage

Stockage:

Stocker à -20°C. Stable pendant un an après l'expédition.

Tampon de stockage:

PBS avec azoture de sodium à 0,02 % et glycérol à 50 % pH 7,3

L'aliquotage n'est pas nécessaire pour le stockage à -20C

*** Les 20ul contiennent 0,1% de BSA.

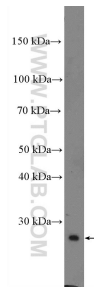
For technical support and original validation data for this product please contact:

T: 1 (888) 4PTGLAB (1-888-478-4522) (toll free in USA), or 1(312) 455-8498 (outside USA)

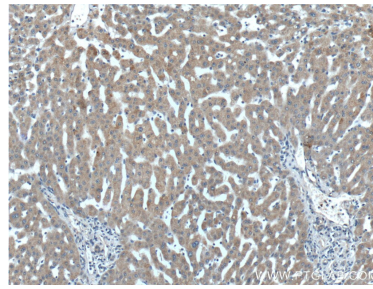
E: proteintech@ptglab.com
W: ptglab.com

This product is exclusively available under Proteintech Group brand and is not available to purchase from any other manufacturer.

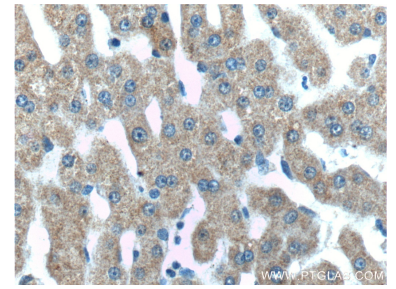
Données de validation sélectionnées



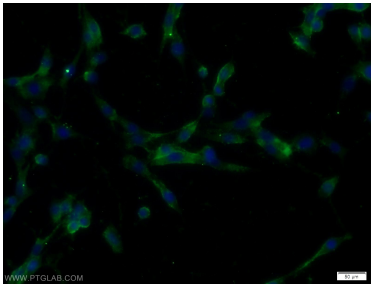
C6 cells were subjected to SDS PAGE followed by western blot with 18500-1-AP (IGFBP4 Antibody) at dilution of 1:1500 incubated at room temperature for 1.5 hours.



Immunohistochemical analysis of paraffin-embedded human liver tissue slide using 18500-1-AP (IGFBP4 Antibody) at dilution of 1:200 (under 10x lens).



Immunohistochemical analysis of paraffin-embedded human liver tissue slide using 18500-1-AP (IGFBP4 Antibody) at dilution of 1:200 (under 40x lens).



Immunofluorescent analysis of C6 cells using 18500-1-AP (IGFBP4 antibody) at dilution of 1:25 and Alexa Fluor 488-conjugated AffiniPure Goat Anti-Rabbit IgG(H+L).