

À des fins de recherche uniquement

# Anticorps Polyclonal de lapin anti-CBX4



Numéro de catalogue: 18544-1-AP

Phare

2 Publications

## Informations de base

Numéro de catalogue:  
18544-1-AP

Taille:  
150ul, Concentration: 500 µg/ml by Nanodrop and 267 µg/ml by Bradford method using BSA as the standard;

Hôte:  
Lapin

Isotype:  
IgG

Immunogen Catalog Number:  
AG13425

Numéro d'acquisition GenBank:  
BC014967

Identification du gène (NCBI):  
8535  
Nom complet:  
chromobox homolog 4 (Pc class homolog, Drosophila)

MW calculé  
61 kDa

MW observés:  
~75 kDa

Méthode de purification:  
Purification par affinité contre l'antigène

Dilutions recommandées:  
WB 1:500-1:1000  
IF 1:50-1:400

## Applications

Applications testées:  
IF, WB, ELISA

Demandes citées:  
IF, PLA, WB

Spécificité de l'espèce:  
Humain, rat, souris

Espèces citées:  
Humain

Contrôles positifs:

WB : diverses cellules, cellule HEK-293, cellules PC-3

IF : cellule U2OS, cellules HeLa

## Informations générales

CBX4, also named as E3 SUMO-protein ligase CBX4 or Polycomb 2 homolog, is a 560 amino acid protein, which contains 1 chromo domain. CBX4 facilitates SUMO1 conjugation by UBE2I. CBX4 acting as a transcriptional co-repressor is involved in maintaining the transcriptionally repressive state of genes, modifies chromatin, rendering it heritably changed in its expressibility. CBX4 localizes in the nucleus and is widely expressed in various tissues. The calculated molecular weight of CBX4 is 61 kDa, but the modified CBX4 may be a 70-75 kDa protein.

## Publications notables

Autrice	Pubmed ID	Journal	Application
Immacolata Giordano	34621739	Front Cell Dev Biol	WB,IF,PLA
Zengxi Yang	33464142	Bioengineered	WB

## Stockage

Stockage:

Stocker à -20°C. Stable pendant un an après l'expédition.

Tampon de stockage:

PBS avec azoture de sodium à 0,02 % et glycérol à 50 % pH 7,3

L'aliquotage n'est pas nécessaire pour le stockage à -20C

\*\*\* Les 20ul contiennent 0,1% de BSA.

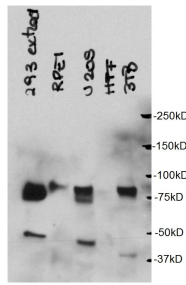
For technical support and original validation data for this product please contact:

T: 1 (888) 4PTGLAB (1-888-478-4522) (toll free in USA), or 1(312) 455-8498 (outside USA)

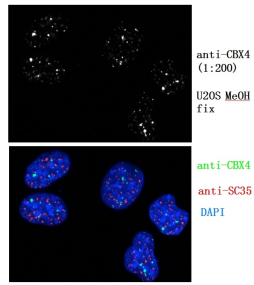
E: proteintech@ptglab.com  
W: ptglab.com

This product is exclusively available under Proteintech Group brand and is not available to purchase from any other manufacturer.

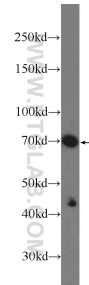
## Données de validation sélectionnées



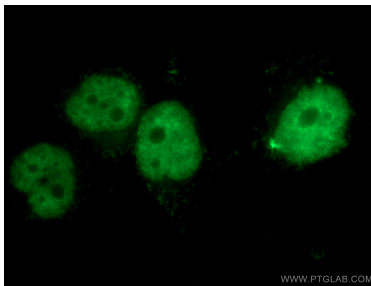
WB result of anti-CBX4 (18544-1-AP) with various cell. (Courtesy of L. Pirone and R. Barrio, CIC bioGUNE).



IF result of anti-CBX4 (18544-1-AP, 1:200) with U2OS cell, MeOH fixation. (Courtesy of L. Pirone and R. Barrio, CIC bioGUNE).



PC-3 cells were subjected to SDS PAGE followed by western blot with 18544-1-AP (CBX4 Antibody) at dilution of 1:600 incubated at room temperature for 1.5 hours.



Immunofluorescent analysis of HeLa cells using 18544-1-AP (CBX4 antibody) at dilution of 1:50 and Alexa Fluor 488-conjugated AffiniPure Goat Anti-Rabbit IgG(H+L).