

À des fins de recherche uniquement

Anticorps Polyclonal de lapin anti-FOXO1



Numéro de catalogue: 18592-1-AP

Phare

102 Publications

Informations de base

Numéro de catalogue:

18592-1-AP

Taille:

150ul, Concentration: 600 µg/ml by Nanodrop;

Hôte:

Lapin

Isotype:

IgG

Immunogen Catalog Number:

AG13296

Numéro d'acquisition GenBank:

BC021981

Identification du gène (NCBI):

2308

Nom complet:

forkhead box O1

MW calculé

655 aa, 70 kDa

MW observés:

70-80 kDa

Méthode de purification:

Purification par affinité contre l'antigène

Dilutions recommandées:

WB 1:1000-1:8000

IP 0.5-4.0 µg for IP and 1:1000-1:4000 for WB

IF 1:200-1:800

Applications

Applications testées:

FC, IF, IP, WB, ELISA

Demandes citées:

ChIP, IF, IHC, IP, WB

Spécificité de l'espèce:

Humain, rat, souris

Espèces citées:

Humain, porc, rat, souris

Contrôles positifs:

WB : cellules DU 145, cellules HEK-293T, cellules HepG2, cellules SGC-7901, tissu cérébral de rat, tissu cérébral de souris, tissu rénal de souris

IP : cellules HepG2,

IF : cellules HeLa,

Informations générales

FOXO1, also named as FOXO1A, FKHR and FKH1, is a member of the FOXO subfamily of Forkhead transcription factors. FOXO1 is a transcription factor which acts as a regulator of cell responses to oxidative stress. FOXO1 interacts with LRPPRC and SIRT1. In the presence of KIRT1, FOXO1 mediates down-regulation of cyclin D1 and up-regulation of CDKN1B levels which are required for cell transition from proliferative growth to quiescence. FOXO1 contains three predicted protein kinase B phosphorylation sites (Thr-24, Ser-256, and Ser-319) that are conserved in other FOXO proteins. The t(2;13) and the variant t(1;13) translocations generate PAX3/FKHR and PAX7/FKHR fusion proteins respectively. The resulting protein is a transcriptional activator. Defects in FOXO1 are a cause of rhabdomyosarcoma type 2 (RMS2).

Publications notables

Autrice	Pubmed ID	Journal	Application
Xiaoyan Liu	31574948	Int J Mol Sci	WB
Duobin Zhang	34585441	J Leukoc Biol	WB
Linyi Shu	34581420	Int J Mol Med	WB

Stockage

Stockage:

Stocker à -20°C. Stable pendant un an après l'expédition.

Tampon de stockage:

PBS avec azoture de sodium à 0,02 % et glycérol à 50 % pH 7,3

L'aliquotage n'est pas nécessaire pour le stockage à -20C

*** Les 20ul contiennent 0,1% de BSA.

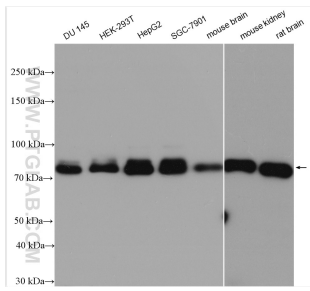
For technical support and original validation data for this product please contact:

T: 1 (888) 4PTGLAB (1-888-478-4522) (toll free in USA), or 1(312) 455-8498 (outside USA)

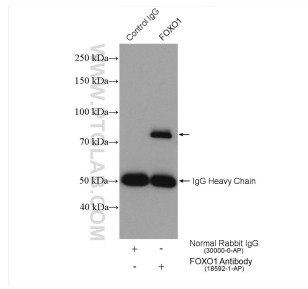
E: proteintech@ptglab.com
W: ptglab.com

This product is exclusively available under Proteintech Group brand and is not available to purchase from any other manufacturer.

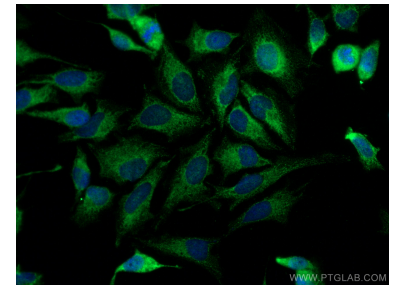
Données de validation sélectionnées



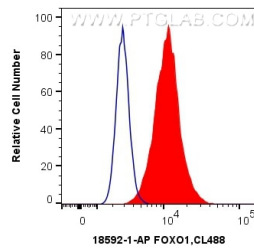
Various lysates were subjected to SDS PAGE followed by western blot with 18592-1-AP (FOXO1 antibody) at dilution of 1:4000 incubated at room temperature for 1.5 hours.



IP result of anti-FOXO1 (IP:18592-1-AP, 4ug; Detection:18592-1-AP 1:2000) with HepG2 cells lysate 960 ug.



Immunofluorescent analysis of (-20°C Methanol) fixed HeLa cells using FOXO1 antibody (18592-1-AP) at dilution of 1:400 and CoraLite@488-Conjugated AffiniPure Goat Anti-Rabbit IgG(H+L).



1X10⁶ HeLa cells were intracellularly stained with 0.4 ug Anti-Human FOXO1 (18592-1-AP) and CoraLite@488-Conjugated AffiniPure Goat Anti-Rabbit IgG(H+L) at dilution 1:1000 (red), or 0.4 ug Control Antibody. Cells were fixed with 4% PFA and permeabilized with Flow Cytometry Perm Buffer (PF00011-C).