

À des fins de recherche uniquement

Anticorps Polyclonal de lapin anti-CD23



Numéro de catalogue: 18642-1-AP

Informations de base

Numéro de catalogue: 18642-1-AP	Numéro d'acquisition GenBank: BC014108	Méthode de purification: Purification par affinité contre l'antigène
Taille: 150ul , Concentration: 400 µg/ml by Nanodrop and 253 µg/ml by Bradford method using BSA as the standard;	Identification du gène (NCBI): 2208	Dilutions recommandées: WB 1:500-1:1000 IHC 1:20-1:200
Hôte: Lapin	Nom complet: Fc fragment of IgE, low affinity II, receptor for (CD23)	
Isotype: IgG	MW calculé: 36 kDa	
Immunogen Catalog Number: AG13348	MW observés: 38-42 kDa	

Applications

Applications testées:

FC, IHC, WB, ELISA

Spécificité de l'espèce:

Humain

Remarque-IHC: il est suggéré de démasquer l'antigène avec un tampon de TE buffer pH 9.0; (*) À défaut, le démasquage de l'antigène peut être effectué avec un tampon citrate pH 6.0.

Contrôles positifs:

WB : cellules Raji,

IHC : tissu d'amygdalite humain, tissu de lymphome humain

Informations générales

CD23, also known as low affinity immunoglobulin epsilon Fc receptor, is a transmembrane glycoprotein present on a subpopulation of B lymphocytes in germinal centres, EBV-transformed B-lymphoblastoid cell lines, follicular dendritic cells, and a subpopulation of peripheral blood cells. CD23 has essential roles in the regulation of IgE production and in the differentiation of B-cells.

Stockage

Stockage:

Stocker à -20°C. Stable pendant un an après l'expédition.

Tampon de stockage:

PBS avec azoture de sodium à 0,02 % et glycérol à 50 % pH 7,3

L'aliquotage n'est pas nécessaire pour le stockage à -20C

*** Les 20ul contiennent 0,1% de BSA.

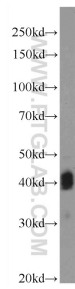
For technical support and original validation data for this product please contact:

T: 1 (888) 4PTGLAB (1-888-478-4522) (toll free in USA), or 1(312) 455-8498 (outside USA)

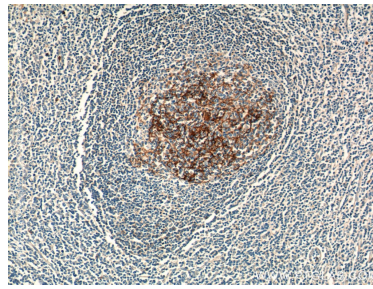
E: proteintech@ptglab.com
W: ptglab.com

This product is exclusively available under Proteintech Group brand and is not available to purchase from any other manufacturer.

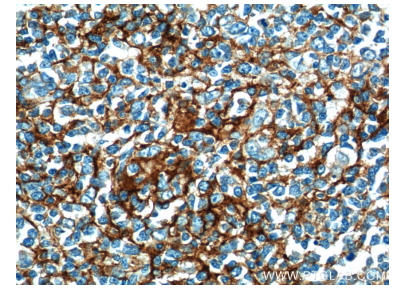
Données de validation sélectionnées



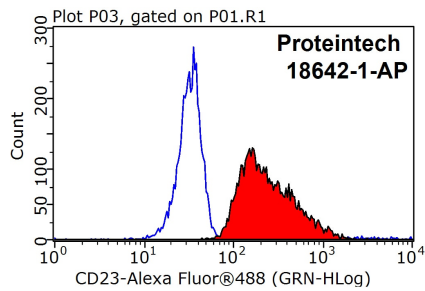
Raji cells were subjected to SDS PAGE followed by western blot with 18642-1-AP (FCER2,CD23 Antibody) at dilution of 1:600 incubated at room temperature for 1.5 hours.



Immunohistochemical analysis of paraffin-embedded human tonsillitis tissue slide using 18642-1-AP (FCER2,CD23 Antibody) at dilution of 1:50 (under 10x lens).



Immunohistochemical analysis of paraffin-embedded human tonsillitis tissue slide using 18642-1-AP (FCER2,CD23 Antibody) at dilution of 1:50 (under 40x lens).



1X10⁶ Raji cells were stained with 0.2ug FCER2,CD23 antibody (18642-1-AP, red) and control antibody (blue). Fixed with 90% MeOH blocked with 3% BSA (30 min). Alexa Fluor 488-conjugated AffiniPure Goat Anti-Rabbit IgG(H+L) with dilution 1:1000.