

À des fins de recherche uniquement

# Anticorps Polyclonal de lapin anti-BRK



Numéro de catalogue: 18697-1-AP

Phare

4 Publications

## Informations de base

Numéro de catalogue:  
18697-1-AP

Taille:  
150ul, Concentration: 850 µg/ml by  
Nanodrop and 473 µg/ml by Bradford  
method using BSA as the standard;

Hôte:  
Lapin

Isotype:  
IgG

Numéro d'acquisition GenBank:  
BC035843

Identification du gène (NCBI):  
5753  
Nom complet:  
PTK6 protein tyrosine kinase 6

MW calculé  
52 kDa

MW observés:  
52 kDa

Méthode de purification:  
Purification par affinité contre  
l'antigène

Dilutions recommandées:  
WB 1:500-1:2000  
IP 0.5-4.0 ug for IP and 1:500-1:1000  
for WB  
IHC 1:20-1:200  
IF 1:10-1:100

## Applications

Applications testées:  
IF, IHC, IP, WB, ELISA

Demandes citées:  
IF, WB

Spécificité de l'espèce:  
Humain, rat, souris

Espèces citées:  
Humain

**Remarque-IHC: il est suggéré de démasquer l'antigène avec un tampon de TE buffer pH 9,0; (\*) À défaut, le démasquage de l'antigène peut être effectué avec un tampon citrate pH 6,0.**

Contrôles positifs:

WB : cellules HeLa, cellules MCF-7, tissu splénique de rat, tissu splénique de souris

IP : cellules HeLa,

IHC : tissu de côlon humain,

IF : cellules MCF-7,

## Informations générales

BRK, also named as PTK6 and FLJ42088, is a cytoplasmic nonreceptor protein kinase which may function as an intracellular signal transducer in epithelial tissues. PTK6 can phosphorylate KHDRBS1, KHDRBS2, KHDRBS3 and STAP2/BKS. Overexpression of PTK6 in mammary epithelial cells leads to sensitization of the cells to epidermal growth factor and results in a partially transformed phenotype. Expression of PTK6 has been detected at low levels in some breast tumors but not in normal breast tissue. Its presence in the nucleus appears to be linked to suppression of tumor progression. This antibody is specific to PTK6.

## Publications notables

Autrice	Pubmed ID	Journal	Application
Guoyu Yu	25189355	Mol Cancer Res	WB
Jianfa Yu	34262410	Dose Response	WB
Xiao-Jing Wang	27311570	Chin J Cancer	WB

## Stockage

Stockage:

Stocker à -20°C. Stable pendant un an après l'expédition.

Tampon de stockage:

PBS avec azoture de sodium à 0,02 % et glycérol à 50 % pH 7,3

L'aliquotage n'est pas nécessaire pour le stockage à -20C

\*\*\* Les 20ul contiennent 0,1% de BSA.

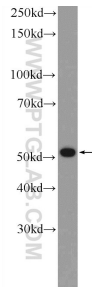
For technical support and original validation data for this product please contact:

T: 1 (888) 4PTGLAB (1-888-478-4522) (toll free  
in USA), or 1(312) 455-8498 (outside USA)

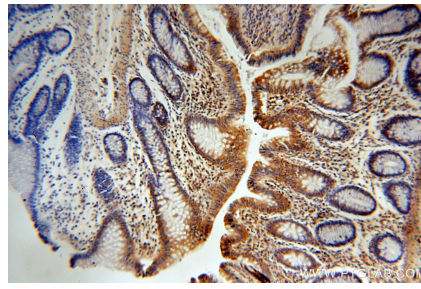
E: proteintech@ptglab.com  
W: ptglab.com

This product is exclusively available under Proteintech Group brand and is not available to purchase from any other manufacturer.

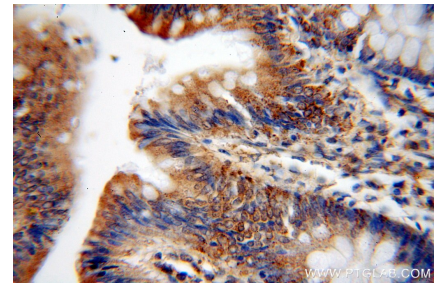
## Données de validation sélectionnées



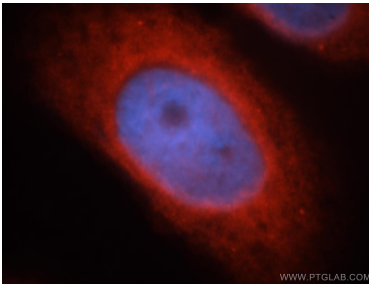
HeLa cells were subjected to SDS PAGE followed by western blot with 18697-1-AP (BRK antibody at dilution of 1:1000 incubated at room temperature for 1.5 hours.



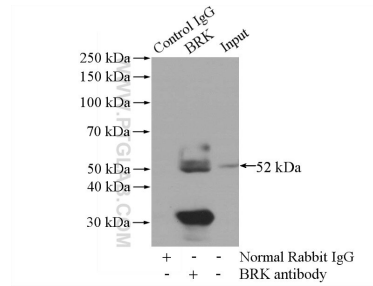
Immunohistochemical analysis of paraffin-embedded human colon using 18697-1-AP (BRK antibody) at dilution of 1:100 (under 10x lens).



Immunohistochemical analysis of paraffin-embedded human colon using 18697-1-AP (BRK antibody) at dilution of 1:100 (under 40x lens).



Immunofluorescent analysis of MCF-7 cells, using PTK6 antibody 18697-1-AP at 1:25 dilution and Rhodamine-labeled goat anti-rabbit IgG (red). Blue pseudocolor = DAPI (fluorescent DNA dye).



IP Result of anti-BRK (IP:18697-1-AP, 4ug; Detection:18697-1-AP 1:800) with HeLa cells lysate 3440ug.