

À des fins de recherche uniquement

Anticorps Polyclonal de lapin anti-GABARAPL1-Specific



Numéro de catalogue: 18721-1-AP

3 Publications

Informations de base

Numéro de catalogue:
18721-1-AP

Taille:
150ul , Concentration: 500 µg/ml by Nanodrop and 247 µg/ml by Bradford method using BSA as the standard;

Hôte:
Lapin

Isotype:
IgG

Numéro d'acquisition GenBank:
NM_031412

Identification du gène (NCBI):
23710

Nom complet:
GABA(A) receptor-associated protein like 1

MW calculé
14 kDa

MW observés:
17 kDa

Méthode de purification:
Purification par affinité contre l'antigène

Dilutions recommandées:
WB 1:2000-1:10000
IHC 1:50-1:500

Applications

Applications testées:
FC, IHC, WB, ELISA

Demandes citées:
WB

Spécificité de l'espèce:
Humain, rat, souris

Espèces citées:
Humain

Contrôles positifs:

WB : tissu cérébral de souris, tissu cardiaque humain, tissu cérébral de rat, tissu hépatique de souris, tissu rénal de souris, tissu splénique humain

IHC : tissu rénal humain, tissu cérébral de souris

Remarque-IHC: il est suggéré de démasquer l'antigène avec un tampon de TE buffer pH 9,0; (*) À défaut, le démasquage de l'antigène peut être effectué avec un tampon citrate pH 6,0.

Informations générales

GABARAPL1 (GABARAP-like protein 1), also named as ATG8, GEC1, APG8L, ATG8L and APG8-LIKE, is a member of GABARP (GABA receptor-associated protein) family. GABARAPL1 was initially identified as estrogen-regulated gene and the protein acts in receptor and vesicle transport. It's also involved in the process of autophagy like GABARAP and GABARAPL2, and may be considered as an autophagic marker. It is expressed at very high levels in the brain, heart, peripheral blood leukocytes, liver, kidney, placenta and skeletal muscle. And at very low levels in thymus and small intestine. The antibody is specific to GABARAPL1, and it doesn't recognize the recombinant GABARAP and GABARAPL2.

Publications notables

Autrice	Pubmed ID	Journal	Application
Pengfei Xu	36435763	BMC Musculoskelet Disord	WB
Alexandra Boeske	28729737	Sci Rep	WB
Le Grand Jaclyn Nicole JN	21862879	Autophagy	WB

Stockage

Stockage:

Stocker à -20°C. Stable pendant un an après l'expédition.

Tampon de stockage:

PBS avec azoture de sodium à 0,02 % et glycérol à 50 % pH 7,3

L'aliquotage n'est pas nécessaire pour le stockage à -20C

*** Les 20ul contiennent 0,1% de BSA.

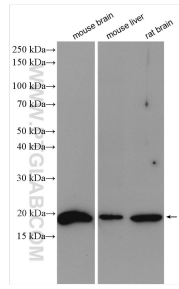
For technical support and original validation data for this product please contact:

T: 1 (888) 4PTGLAB (1-888-478-4522) (toll free in USA), or 1(312) 455-8498 (outside USA)

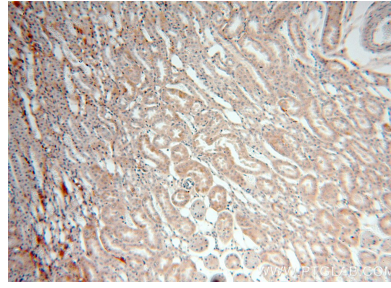
E: proteintech@ptglab.com
W: ptglab.com

This product is exclusively available under Proteintech Group brand and is not available to purchase from any other manufacturer.

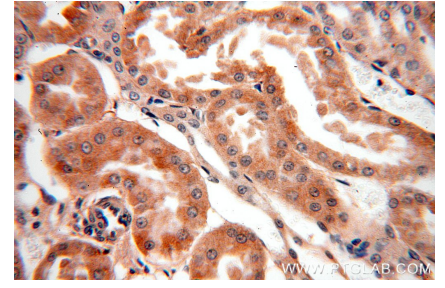
Données de validation sélectionnées



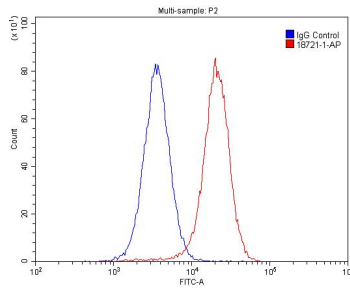
Various lysates were subjected to SDS PAGE followed by western blot with 18721-1-AP (GABARAPL1 antibody) at dilution of 1:5000 incubated at room temperature for 1.5 hours.



Immunohistochemical analysis of paraffin-embedded human kidney using 18721-1-AP (GABARAPL1 antibody) at dilution of 1:100 (under 10x lens).



Immunohistochemical analysis of paraffin-embedded human kidney using 18721-1-AP (GABARAPL1 antibody) at dilution of 1:100 (under 40x lens).



1X10⁶ HepG2 cells were stained with 0.2ug GABARAPL1 antibody (18721-1-AP, red) and control antibody (blue). Cells were fixed with 4% PFA and permeabilized with 0.1% Triton X-100. Alexa Fluor 488-conjugated AffiniPure Goat Anti-Rabbit IgG(H+L) with dilution 1:1500.