

À des fins de recherche uniquement

Anticorps Polyclonal de lapin anti-GABARAPL2-Specific



Numéro de catalogue: 18724-1-AP

Phare

12 Publications

Informations de base

Numéro de catalogue:
18724-1-AP

Taille:
150ul , Concentration: 450 µg/ml by Nanodrop and 320 µg/ml by Bradford method using BSA as the standard;

Hôte:
Lapin

Isotype:
IgG

Numéro d'acquisition GenBank:
BC005985

Identification du gène (NCBI):
11345

Nom complet:
GABA(A) receptor-associated protein-like 2

MW calculé

14 kDa

MW observés:

14 kDa

Méthode de purification:
Purification par affinité contre l'antigène

Dilutions recommandées:
WB 1:500-1:1000
IHC 1:20-1:200

Applications

Applications testées:
FC, IHC, WB, ELISA

Demandes citées:
IHC, WB

Spécificité de l'espèce:
Humain, rat, souris

Espèces citées:
Humain, rat, souris

Remarque-IHC: il est suggéré de démasquer l'antigène avec un tampon de TE buffer pH 9,0; (*) À défaut, le démasquage de l'antigène peut être effectué avec un tampon citrate pH 6,0.

Contrôles positifs:

WB : cellules COLO 320, cellules PC-3, tissu cérébral de souris, tissu cérébral humain, tissu splénique de souris

IHC : tissu cardiaque humain, tissu cérébral humain

Informations générales

GABARAPL2 (also known as Golgi-associated ATPase enhancer of 16 kDa; GATE-16) was originally characterized as a factor essential for intra-Golgi protein transport. Later GABARAPL2 along with LC3 and GABARAP, were identified as the homologs of yeast ATG8 which is a unique ubiquitin-like protein essential for autophagy. When induced GABARAPL2 is first digested by ATG4 family enzymes to become its mature form: GABARAPL2-I, later conjugated to PE lipid as lipidated form: GABARAPL2-II. The lipidated form migrates faster than its mature form on SDS-PAGE gel. GABARAPL2 is strongly expressed in the brain. This antibody is specific to GABARAPL2. It has no cross-reaction to other GABARAP protein.

Publications notables

Autrice	Pubmed ID	Journal	Application
Naoya Sakaguchi	33042141	Front Immunol	WB
Clémence Taisne	30872707	Sci Rep	
Hye Young Ryu	33654220	Exp Mol Med	WB

Stockage

Stockage:
Stocker à -20°C. Stable pendant un an après l'expédition.

Tampon de stockage:
PBS avec azoture de sodium à 0,02 % et glycérol à 50 % pH 7,3
L'aliquotage n'est pas nécessaire pour le stockage à -20C

*** Les 20ul contiennent 0,1% de BSA.

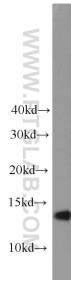
For technical support and original validation data for this product please contact:

T: 1 (888) 4PTGLAB (1-888-478-4522) (toll free in USA), or 1(312) 455-8498 (outside USA)

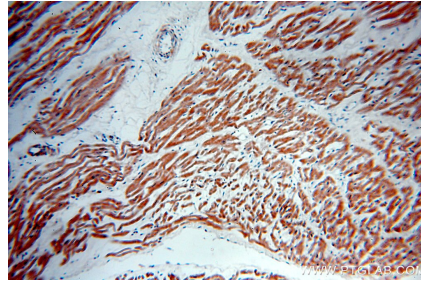
E: proteintech@ptglab.com
W: ptglab.com

This product is exclusively available under Proteintech Group brand and is not available to purchase from any other manufacturer.

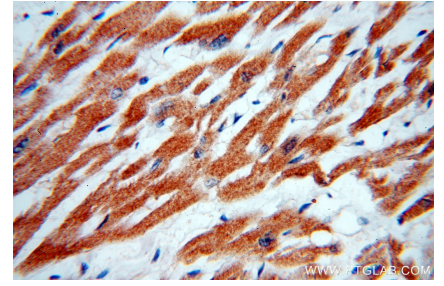
Données de validation sélectionnées



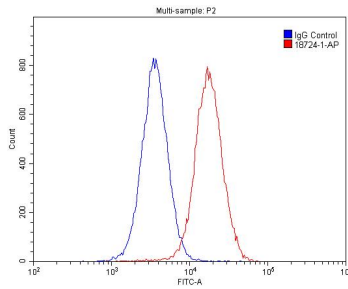
COLO 320 cells were subjected to SDS PAGE followed by western blot with 18724-1-AP (GABARAPL2-Specific antibody) at dilution of 1:800 incubated at room temperature for 1.5 hours.



Immunohistochemical analysis of paraffin-embedded human heart using 18724-1-AP (GABARAPL2-Specific antibody) at dilution of 1:50 (under 10x lens).



Immunohistochemical analysis of paraffin-embedded human heart using 18724-1-AP (GABARAPL2-Specific antibody) at dilution of 1:50 (under 40x lens).



1×10^6 HepG2 cells were stained with 0.2ug GABARAPL2-Specific antibody (18724-1-AP, red) and control antibody (blue). Cells were fixed with 4% PFA and permeabilized with 0.1% Triton X-100. Alexa Fluor 488-conjugated AffiniPure Goat Anti-Rabbit IgG(H+L) with dilution 1:1500.