

À des fins de recherche uniquement

Anticorps Polyclonal de lapin anti-DNA2



Numéro de catalogue: 18727-1-AP

Phare

8 Publications

Informations de base

Numéro de catalogue:
18727-1-AP

Taille:
150ul, Concentration: 550 µg/ml by Nanodrop and 287 µg/ml by Bradford method using BSA as the standard;

Hôte:
Lapin

Isotype:
IgG

Numéro d'acquisition GenBank:
NM_001080449

Identification du gène (NCBI):
1763

Nom complet:
DNA replication helicase 2 homolog (yeast)

MW calculé
120 kDa

MW observés:
127 kDa

Méthode de purification:
Purification par affinité contre l'antigène

Dilutions recommandées:
WB 1:500-1:1000
IP 0.5-4.0 ug for IP and 1:200-1:1000 for WB
IHC 1:50-1:500
IF 1:10-1:100

Applications

Applications testées:
IF, IHC, IP, WB, ELISA

Demandes citées:
IF, IHC, WB

Spécificité de l'espèce:
Humain, souris

Espèces citées:
Humain, souris

Contrôles positifs:

WB : tissu hépatique de souris, tissu de thymus de souris

IP : tissu hépatique de souris,

IHC : tissu de cancer du col de l'utérus humain,

IF : cellules HepG2,

Remarque-IHC: il est suggéré de démasquer l'antigène avec un tampon de TE buffer pH 9,0; (*) À défaut, le démasquage de l'antigène peut être effectué avec un tampon citrate pH 6,0.

Informations générales

DNA2 (DNA replication ATP-dependent helicase/nuclease DNA2) is also named as DNA2L, KIAA0083 and belongs to the DNA2/NAM7 helicase family. This protein includes 2 domains: DNA replication nuclease and DNA replication ATP-dependent helicase. It is a conserved helicase/nuclease involved in the maintenance of mitochondrial and nuclear DNA stability and it can interact with DNA polymerase gamma and stimulating its activity. It can also process intermediate 5' flap structures occurring in DNA replication long-patch base excision repair in mitochondria. It has 4 isoforms produced by alternative splicing. This antibody is specific to DNA2.

Publications notables

Autrice	Pubmed ID	Journal	Application
Eric Hervouet	26474850	BMC Cancer	WB
Yongqu Lu	33134313	Front Mol Biosci	IHC
Ahmed Emam	35817959	Nat Cell Biol	WB, IF

Stockage

Stockage:

Stocker à -20°C. Stable pendant un an après l'expédition.

Tampon de stockage:

PBS avec azoture de sodium à 0,02 % et glycérol à 50 % pH 7,3

L'aliquotage n'est pas nécessaire pour le stockage à -20C

*** Les 20ul contiennent 0,1% de BSA.

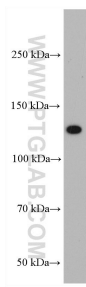
For technical support and original validation data for this product please contact:

T: 1 (888) 4PTGLAB (1-888-478-4522) (toll free in USA), or 1(312) 455-8498 (outside USA)

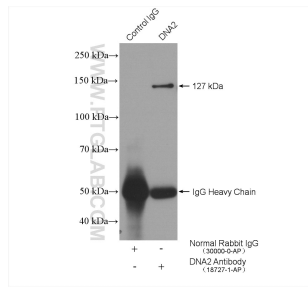
E: proteintech@ptglab.com
W: ptglab.com

This product is exclusively available under Proteintech Group brand and is not available to purchase from any other manufacturer.

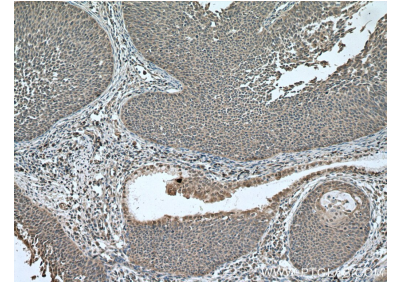
Données de validation sélectionnées



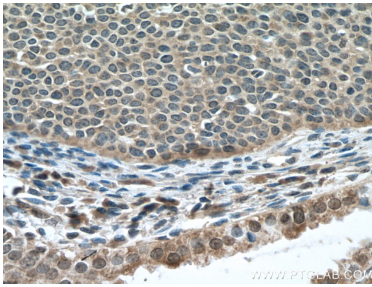
mouse liver tissue were subjected to SDS PAGE followed by western blot with 18727-1-AP (DNA2 antibody) at dilution of 1:600 incubated at room temperature for 1.5 hours.



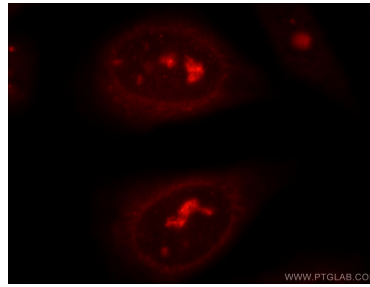
IP result of anti-DNA2 (IP:18727-1-AP, 4 μ g; Detection:18727-1-AP 1:300) with mouse liver tissue lysate 4800 μ g.



Immunohistochemical analysis of paraffin-embedded human cervical cancer tissue slide using 18727-1-AP (DNA2 antibody) at dilution of 1:200 (under 10x lens. Heat mediated antigen retrieval with Tris-EDTA buffer (pH 9.0).



Immunohistochemical analysis of paraffin-embedded human cervical cancer tissue slide using 18727-1-AP (DNA2 antibody) at dilution of 1:200 (under 40x lens. Heat mediated antigen retrieval with Tris-EDTA buffer (pH 9.0).



Immunofluorescent analysis of HepG2 cells using 18727-1-AP (DNA2 antibody) at dilution of 1:25 and Rhodamine-Goat anti-Rabbit IgG.