

À des fins de recherche uniquement

Anticorps Polyclonal de lapin anti-NIPBL



Numéro de catalogue: 18792-1-AP

1 Publications

Informations de base

Numéro de catalogue:
18792-1-AP

Taille:
150ul , Concentration: 350 µg/ml by Nanodrop and 173 µg/ml by Bradford method using BSA as the standard;

Hôte:
Lapin

Isotype:
IgG

Immunogen Catalog Number:
AG5663

Numéro d'acquisition GenBank:
BC033847

Identification du gène (NCBI):
25836

Nom complet:
Nipped-B homolog (Drosophila)

MW calculé
2804 aa, 316 kDa

MW observés:
300 kDa

Méthode de purification:
Purification par affinité contre l'antigène

Dilutions recommandées:
WB 1:500-1:2000
IF 1:50-1:500

Applications

Applications testées:
IF, WB, ELISA

Demandes citées:
WB

Spécificité de l'espèce:
Humain, rat, souris

Espèces citées:
Humain

Contrôles positifs:

WB : cellules HeLa,

IF : cellules HeLa,

Informations générales

NIPBL, also named as Nipped-B-like protein, is a 28-4 amino acid protein, which Contains one Pro-Xaa-Val-Xaa-Leu (PxVxL) motif, which is required for interaction with chromoshadow domains and belongs to the SCC2/Nipped-B family. NIPBL probably plays a structural role in chromatin and Involve in sister chromatid cohesion, possibly by interacting with the cohesin complex. endogenous full length NIPBL which is estimated to be about 300kDa led us to believe that the NIPBL protein was deteriorated or lost by the standard protein extraction and blotting techniques.

Publications notables

Autrice	Pubmed ID	Journal	Application
Dan Liu	29712898	Nat Commun	WB

Stockage

Stockage:
Stocker à -20°C. Stable pendant un an après l'expédition.

Tampon de stockage:
PBS avec azoture de sodium à 0,02 % et glycérol à 50 % pH 7,3
L'aliquotage n'est pas nécessaire pour le stockage à -20C

*** Les 20ul contiennent 0,1% de BSA.

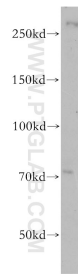
For technical support and original validation data for this product please contact:

T: 1 (888) 4PTGLAB (1-888-478-4522) (toll free in USA), or 1(312) 455-8498 (outside USA)

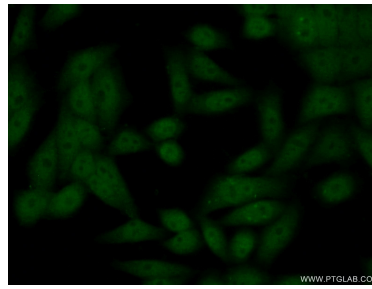
E: proteintech@ptglab.com
W: ptglab.com

This product is exclusively available under Proteintech Group brand and is not available to purchase from any other manufacturer.

Données de validation sélectionnées



HeLa cells were subjected to SDS PAGE followed by western blot with 18792-1-AP (NIPBL antibody) at dilution of 1:800 incubated at room temperature for 1.5 hours.



Immunofluorescent analysis of (10% Formaldehyde) fixed HeLa cells using 18792-1-AP (NIPBL antibody) at dilution of 1:50 and Alexa Fluor 488-conjugated AffiniPure Goat Anti-Rabbit IgG(H+L).