

À des fins de recherche uniquement

Anticorps Polyclonal de lapin anti-PSME4



Numéro de catalogue: 18799-1-AP

Phare

2 Publications

Informations de base

Numéro de catalogue:
18799-1-AP

Taille:
150ul, Concentration: 700 µg/ml by Nanodrop and 450 µg/ml by Bradford method using BSA as the standard;

Hôte:
Lapin

Isotype:
IgG

Numéro d'acquisition GenBank:
BC113668

Identification du gène (NCBI):
23198

Nom complet:
proteasome (prosome, macropain) activator subunit 4

MW calculé:
211 kDa

MW observés:
140 kDa

Méthode de purification:
Purification par affinité contre l'antigène

Dilutions recommandées:
WB 1:500-1:2000
IP 0.5-4.0 ug for IP and 1:500-1:1000 for WB
IHC 1:50-1:500
IF 1:10-1:100

Applications

Applications testées:
IF, IHC, IP, WB, ELISA

Demandes citées:
IHC, WB

Spécificité de l'espèce:
Humain, rat, souris

Espèces citées:
Humain

Contrôles positifs:

WB : cellules HEK-293, cellules HepG2

IP : cellules HEK-293,

IHC : tissu de cancer du foie humain,

IF : cellules HepG2, cellules HeLa

Remarque-IHC: il est suggéré de démasquer l'antigène avec un tampon de TE buffer pH 9,0; (*) À défaut, le démasquage de l'antigène peut être effectué avec un tampon citrate pH 6,0.

Informations générales

PSME4, like PSME1, 2, and 3, encodes proteasome activator complex subunit 4 also named proteasome activator 200 kDa (PA200). PA200 activates proteasomal cleavage of peptides in an energy-independent manner. After exposure of cells to ionizing radiation, PA200 forms nuclear foci and enhances proteasome activity independent of the stage of cell cycle arrest. PA200 also may be involved in spermatogenesis. The antibody is expected to recognize all the 4 isoforms of PSME4 but appears to mainly detect isoform 2 of 140-kDa.

Publications notables

Autrice	Pubmed ID	Journal	Application
Zhen Yu	35344764	EBioMedicine	IHC
Sijia Ge	35115815	Int J Gen Med	WB

Stockage

Stockage:

Stocker à -20°C. Stable pendant un an après l'expédition.

Tampon de stockage:

PBS avec azoture de sodium à 0,02 % et glycérol à 50 % pH 7,3

L'aliquotage n'est pas nécessaire pour le stockage à -20C

*** Les 20ul contiennent 0,1% de BSA.

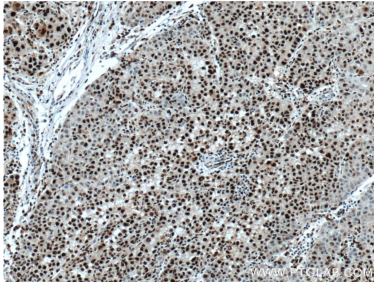
For technical support and original validation data for this product please contact:

T: 1 (888) 4PTGLAB (1-888-478-4522) (toll free in USA), or 1(312) 455-8498 (outside USA)

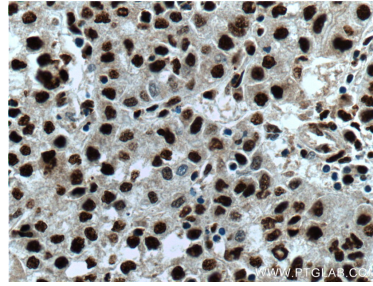
E: proteintech@ptglab.com
W: ptglab.com

This product is exclusively available under Proteintech Group brand and is not available to purchase from any other manufacturer.

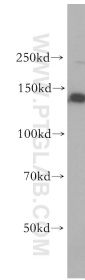
Données de validation sélectionnées



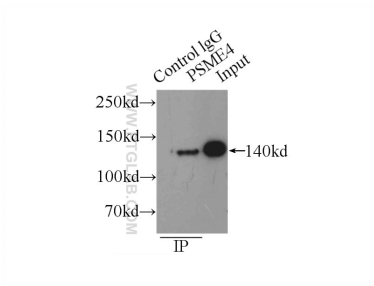
Immunohistochemical analysis of paraffin-embedded human liver cancer tissue slide using 18799-1-AP (PSME4 antibody) at dilution of 1:200 (under 10x lens. Heat mediated antigen retrieval with Tris-EDTA buffer (pH 9.0).



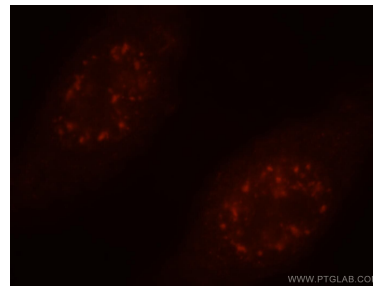
Immunohistochemical analysis of paraffin-embedded human liver cancer tissue slide using 18799-1-AP (PSME4 antibody) at dilution of 1:200 (under 40x lens. Heat mediated antigen retrieval with Tris-EDTA buffer (pH 9.0).



HEK-293 cells were subjected to SDS PAGE followed by western blot with 18799-1-AP (PSME4 antibody) at dilution of 1:400 incubated at room temperature for 1.5 hours.



IP Result of anti-PSME4 (IP:18799-1-AP, 3ug; Detection:18799-1-AP 1:500) with HEK-293 cells lysate 1760ug.



Immunofluorescent analysis of HepG2 cells, using PSME4 antibody 18799-1-AP at 1:25 dilution and Rhodamine-labeled goat anti-rabbit IgG (red).