

À des fins de recherche uniquement

Anticorps Polyclonal de lapin anti-PPP1R9A



Numéro de catalogue: 18801-1-AP

Informations de base

Numéro de catalogue: 18801-1-AP	Numéro d'acquisition GenBank: BC150636	Méthode de purification: Purification par affinité contre l'antigène
Taille: 150ul, Concentration: 260 µg/ml by Nanodrop and 140 µg/ml by Bradford method using BSA as the standard;	Identification du gène (NCBI): 55607	Dilutions recommandées: WB 1:500-1:1000 IF 1:10-1:100
Hôte: Lapin	Nom complet: protein phosphatase 1, regulatory (inhibitor) subunit 9A	
Isotype: IgG	MW calculé: 123 kDa	
	MW observés: 180 kDa	

Applications

Applications testées: IF, WB, ELISA	Contrôles positifs:
Spécificité de l'espèce: Humain, rat, souris	WB : cellules PC-3, IF : cellules HepG2, cellules HeLa

Informations générales

PPP1R9A, also named as KIAA1222 and NEB1, binds to actin filaments (F-actin) and shows cross-linking activity. PPP1R9A has been found to be concentrated in the synapse of developed neurons and in the lamellipodia of the growth cone during neuron development. PPP1R9A may be involved in neurite formation. PPP1R9A inhibits protein phosphatase 1-alpha activity.

Stockage

Stockage:
Stocker à -20°C. Stable pendant un an après l'expédition.
Tampon de stockage:
PBS avec azoture de sodium à 0,02 % et glycérol à 50 % pH 7,3
L'aliquotage n'est pas nécessaire pour le stockage à -20C

*** Les 20ul contiennent 0,1% de BSA.

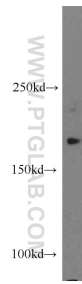
For technical support and original validation data for this product please contact:

T: 1 (888) 4PTGLAB (1-888-478-4522) (toll free in USA), or 1(312) 455-8498 (outside USA)

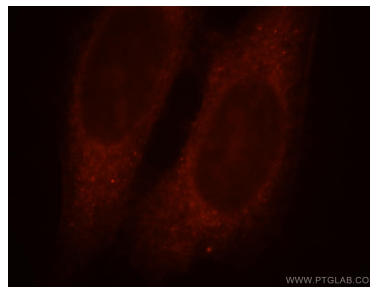
E: proteintech@ptglab.com
W: ptglab.com

This product is exclusively available under Proteintech Group brand and is not available to purchase from any other manufacturer.

Données de validation sélectionnées



PC-3 cells were subjected to SDS PAGE followed by western blot with 18801-1-AP (PPP1R9A antibody) at dilution of 1:300 incubated at room temperature for 1.5 hours.



Immunofluorescent analysis of HepG2 cells, using PPP1R9A antibody 18801-1-AP at 1:25 dilution and Rhodamine-labeled goat anti-rabbit IgG (red).