

À des fins de recherche uniquement

Anticorps Polyclonal de lapin anti-INTS8



Numéro de catalogue: 18802-1-AP

3 Publications

Informations de base

Numéro de catalogue:
18802-1-AP

Taille:
150ul, Concentration: 400 µg/ml by Nanodrop and 240 µg/ml by Bradford method using BSA as the standard;

Hôte:
Lapin

Isotype:
IgG

Numéro d'acquisition GenBank:
BC136754

Identification du gène (NCBI):
55656

Nom complet:
integrator complex subunit 8

MW calculé
111 kDa

MW observés:
90-115 kDa

Méthode de purification:
Purification par affinité contre l'antigène

Dilutions recommandées:
WB 1:200-1:1000
IP 0.5-4.0 ug for IP and 1:500-1:1000 for WB
IF 1:10-1:100

Applications

Applications testées:
IF, IP, WB, ELISA

Demandes citées:
IHC, WB

Spécificité de l'espèce:
Humain

Espèces citées:
Humain, souris

Contrôles positifs:

WB : cellules MCF7, cellules HeLa

IP : cellules HeLa,

IF : cellules HeLa,

Informations générales

INTS8, also named as C8orf52, is a Component of the Integrator complex which is a complex involved in the small nuclear RNAs (snRNA) U1 and U2 transcription and in their 3'-box-dependent processing. INTS8 is associated with the C-terminal domain (CTD) of RNA polymerase II largest subunit (POLR2A) and is recruited to the U1 and U2 snRNAs genes.

Publications notables

Autrice	Pubmed ID	Journal	Application
Hai Zheng	33243860	Science	WB
Hui Tong	30881114	Cancer Manag Res	IHC
Fuqiang Yin	27567667	J Exp Clin Cancer Res	WB

Stockage

Stockage:

Stocker à -20°C. Stable pendant un an après l'expédition.

Tampon de stockage:

PBS avec azoture de sodium à 0,02 % et glycérol à 50 % pH 7,3

L'aliquotage n'est pas nécessaire pour le stockage à -20C

*** Les 20ul contiennent 0,1% de BSA.

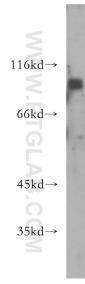
For technical support and original validation data for this product please contact:

T: 1 (888) 4PTGLAB (1-888-478-4522) (toll free in USA), or 1(312) 455-8498 (outside USA)

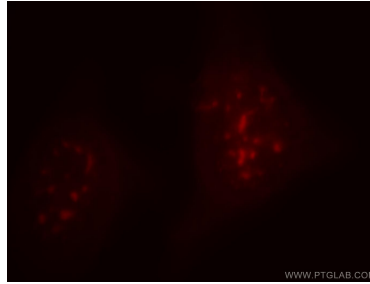
E: proteintech@ptglab.com
W: ptglab.com

This product is exclusively available under Proteintech Group brand and is not available to purchase from any other manufacturer.

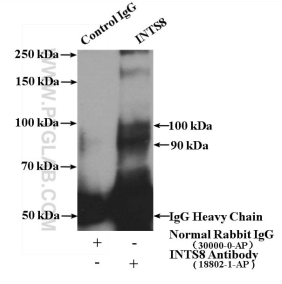
Données de validation sélectionnées



MCF7 cells were subjected to SDS PAGE followed by western blot with 18802-1-AP (INTS8 antibody) at dilution of 1:300 incubated at room temperature for 1.5 hours.



Immunofluorescent analysis of HeLa cells, using INTS8 antibody 18802-1-AP at 1:25 dilution and Rhodamine-labeled goat anti-rabbit IgG (red).



IP Result of anti-INTS8 (IP:18802-1-AP, 4ug; Detection:18802-1-AP 1:500) with HeLa cells lysate 4000ug.