

À des fins de recherche uniquement

Anticorps Polyclonal de lapin anti-MEPE



Numéro de catalogue: 18804-1-AP **Phare**

Informations de base

Numéro de catalogue:
18804-1-AP

Taille:
150ul, Concentration: 700 µg/ml by
Nanodrop and 307 µg/ml by Bradford
method using BSA as the standard;

Hôte:
Lapin

Isotype:
IgG

Numéro d'acquisition GenBank:
BC128158

Identification du gène (NCBI):
56955

Nom complet:
matrix extracellular
phosphoglycoprotein

MW calculé
525 aa, 58 kDa

MW observés:
43 kDa, 98 kDa

Méthode de purification:
Purification par affinité contre
l'antigène

Dilutions recommandées:
WB 1:1000-1:4000

Applications

Applications testées:
WB, ELISA

Spécificité de l'espèce:
Humain

Contrôles positifs:

WB: cellules HepG2, cellules A2780, cellules A375,
cellules HeLa, cellules MCF-7

Informations générales

Matrix extracellular phosphoglycoprotein (MEPE), also known as osteoblast/osteocyte factor 45 (OF45), is a member of the small integrin-binding ligand N-linked glycoprotein (SIBLING) family (PMID: 12952171). MEPE promotes renal phosphate excretion and modulates mineralization (PMID: 22582013). It can be phosphorylated by secreted protein kinases (PMID: 14962809). MEPE is expressed in osteoblasts, osteocytes and odontoblasts, and the expression has also been reported in numerous human tumor cell lines (PMID: 14962809; 20145617). It is a 525-amino acid protein with a calculated molecular weight of 58 kDa. This antibody raised against a synthetic peptide (CTHGRKYHYVPHRQNNSTR) detects a major band (43 kDa) and two minor bands (98 kDa and 34 kDa).

Stockage

Stockage:

Stocker à -20°C. Stable pendant un an après l'expédition.

Tampon de stockage:

PBS avec azoture de sodium à 0,02 % et glycérol à 50 % pH 7,3

L'aliquotage n'est pas nécessaire pour le stockage à -20C

***** Les 20ul contiennent 0,1% de BSA.**

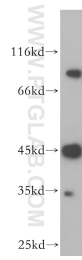
For technical support and original validation data for this product please contact:

T: 1 (888) 4PTGLAB (1-888-478-4522) (toll free
in USA), or 1(312) 455-8498 (outside USA)

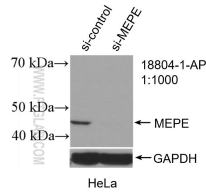
E: proteintech@ptglab.com
W: ptglab.com

This product is exclusively available under Proteintech Group brand and is not available to purchase from any other manufacturer.

Données de validation sélectionnées



HepG2 cells were subjected to SDS PAGE followed by western blot with 18804-1-AP (MEPE antibody) at dilution of 1:600 incubated at room temperature for 1.5 hours.



WB result of MEPE antibody (18804-1-AP; 1:1000; incubated at room temperature for 1.5 hours) with sh-Control and sh-MEPE transfected HeLa cells.