

À des fins de recherche uniquement

Anticorps Polyclonal de lapin anti-RBP2



Numéro de catalogue: 18825-1-AP

3 Publications

Informations de base

Numéro de catalogue: 18825-1-AP	Numéro d'acquisition GenBank: NM_005056	Méthode de purification: Purification par affinité contre l'antigène
Taille: 150ul , Concentration: 260 µg/ml by Nanodrop and 240 µg/ml by Bradford method using BSA as the standard;	Identification du gène (NCBI): 5927	Dilutions recommandées: WB 1:500-1:1000 IF 1:50-1:500
Hôte: Lapin	Nom complet: lysine (K)-specific demethylase 5A	
Isotype: IgG	MW calculé: 192 kDa	
	MW observés: 192 kDa	

Applications

Applications testées: IF, WB, ELISA	Contrôles positifs: WB : cellules HeLa,
Demandes citées: IF, WB	IF : cellules HeLa,
Spécificité de l'espèce: Humain, rat, souris	
Espèces citées: Humain, rat, souris	

Informations générales

KDM5A, also named as JARID1A, RBBP2 and RBP2, belongs to the JARID1 histone demethylase family. KDM5A is a Histone demethylase that specifically demethylates 'Lys-4' of histone H3, thereby playing a central role in histone code. Does not demethylate histone H3 'Lys-9', H3 'Lys-27', H3 'Lys-36', H3 'Lys-79' or H4 'Lys-20'. RBP2 may stimulate transcription mediated by nuclear receptors. It may be involved in transcriptional regulation of Hox proteins during cell differentiation. It may participate in transcriptional repression of cytokines such as CXCL12.

Publications notables

Autrice	Pubmed ID	Journal	Application
Wenxia Xu	29989047	Int J Biol Sci	WB
Guoyuan Pan	31926245	Life Sci	IF
Yizhuo Gao	36537648	Environ Toxicol	WB,IF

Stockage

Stockage:
Stocker à -20°C. Stable pendant un an après l'expédition.
Tampon de stockage:
PBS avec azoture de sodium à 0,02 % et glycérol à 50 % pH 7,3
L'aliquotage n'est pas nécessaire pour le stockage à -20C

*** Les 20ul contiennent 0,1% de BSA.

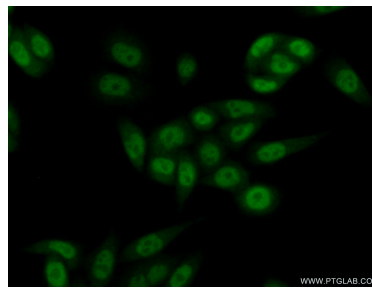
For technical support and original validation data for this product please contact:
T: 1 (888) 4PTGLAB (1-888-478-4522) (toll free in USA), or 1(312) 455-8498 (outside USA)
E: proteintech@ptglab.com
W: ptglab.com

This product is exclusively available under Proteintech Group brand and is not available to purchase from any other manufacturer.

Données de validation sélectionnées



HeLa cells were subjected to SDS PAGE followed by western blot with 18825-1-AP (RBP2 antibody) at dilution of 1:500 incubated at room temperature for 1.5 hours.



Immunofluorescent analysis of (10% Formaldehyde) fixed HeLa cells using 18825-1-AP (RBP2 antibody) at dilution of 1:50 and Alexa Fluor 488-conjugated AffiniPure Goat Anti-Rabbit IgG(H+L).