

À des fins de recherche uniquement

Anticorps Polyclonal de lapin anti-SORCS1



Numéro de catalogue: 18839-1-AP

Informations de base

Numéro de catalogue:
18839-1-AP

Taille:
150ul, Concentration: 500 µg/ml by Nanodrop and 233 µg/ml by Bradford method using BSA as the standard;

Hôte:
Lapin

Isotype:
IgG

Numéro d'acquisition GenBank:
BC131597

Identification du gène (NCBI):
114815
Nom complet:
sortilin-related VPS10 domain containing receptor 1

MW calculé
1168 aa, 130 kDa

MW observés:
130 kDa, 60-80 kDa

Méthode de purification:
Purification par affinité contre l'antigène

Dilutions recommandées:
WB 1:500-1:1000

Applications

Applications testées:
FC, WB, ELISA

Spécificité de l'espèce:
Humain, souris

Contrôles positifs:

WB : cellules Y79, cellules HEK-293, tissu cérébral de souris

Informations générales

SorCS1 is a 130 kDa type I transmembrane protein, belonging to Vps10p-domain (Vps10p-D) receptor family that comprises an N-terminal Vps10p-D, a leucine-rich domain, a single transmembrane domain, and a short cytoplasmic domain. SorCS1 is synthesized as a proprotein, which is converted to the mature receptor in late Golgi compartments by cleavage of the N-terminal propeptide. Alternative splicing of human SorCS1 results in four isoforms with different cytoplasmic domains and differential expression in tissues. This antibody was generated against the C-terminal region of human SorCS1 and recognizes various forms of SorCS1. Multiple bands around 100-130 kDa as well as 60-80 kDa have been detected in Y79 cells by western blot assay.

Stockage

Stockage:
Stocker à -20°C. Stable pendant un an après l'expédition.
Tampon de stockage:
PBS avec azoture de sodium à 0,02 % et glycérol à 50 % pH 7,3
L'aliquotage n'est pas nécessaire pour le stockage à -20C

*** Les 20ul contiennent 0,1% de BSA.

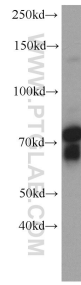
For technical support and original validation data for this product please contact:

T: 1 (888) 4PTGLAB (1-888-478-4522) (toll free in USA), or 1(312) 455-8498 (outside USA)

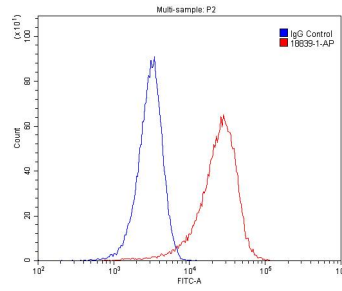
E: proteintech@ptglab.com
W: ptglab.com

This product is exclusively available under Proteintech Group brand and is not available to purchase from any other manufacturer.

Données de validation sélectionnées



Y79 cells were subjected to SDS PAGE followed by western blot with 18839-1-AP (SORCS1 antibody) at dilution of 1:500 incubated at room temperature for 1.5 hours.



1×10^6 HeLa cells were stained with 0.2ug SORCS1 antibody (18839-1-AP, red) and control antibody (blue). Alexa Fluor 488-conjugated AffiniPure Goat Anti-Rabbit IgG(H+L) with dilution 1:1500. Cells were fixed with 4% PFA and permeabilized with 0.1% Triton X-100.