

À des fins de recherche uniquement

Anticorps Polyclonal de lapin anti-RBM16



Numéro de catalogue: 18893-1-AP

Informations de base

Numéro de catalogue:
18893-1-AP

Taille:
150ul, Concentration: 400 µg/ml by Nanodrop and 333 µg/ml by Bradford method using BSA as the standard;

Hôte:
Lapin

Isotype:
IgG

Immunogen Catalog Number:
AG13499

Numéro d'acquisition GenBank:
BC070071

Identification du gène (NCBI):
22828
Nom complet:
RNA binding motif protein 16

MW calculé
1271 aa, 141 kDa

MW observés:
170 kDa

Méthode de purification:
Purification par affinité contre l'antigène

Dilutions recommandées:
WB 1:2000-1:10000
IP 0.5-4.0 ug for IP and 1:500-1:1000 for WB
IHC 1:50-1:500
IF 1:10-1:100

Applications

Applications testées:
IF, IHC, IP, WB, ELISA

Spécificité de l'espèce:
Humain, souris

Remarque-IHC: il est suggéré de démasquer l'antigène avec un tampon de TE buffer pH 9.0; (*) À défaut, le démasquage de l'antigène peut être effectué avec un tampon citrate pH 6.0.

Contrôles positifs:

WB : cellules A549, cellules HeLa, cellules HT-1080, cellules LO2, cellules NIH/3T3, cellules THP-1

IP : cellules HeLa,

IHC : tissu testiculaire humain, tissu de cancer du col de l'utérus humain

IF : cellules HeLa, cellules HepG2

Informations générales

RBM16, also named as SCAF8, CCAP7, KIAA1116, is a 1271 amino acid protein, which interacts with POLR2A. RBM16 may play a role in mRNA processing. Immunoblot analysis of the total rat liver nuclear and nuclear matrix protein fractions revealed a single band with an apparent molecular mass of 170 kDa. While the apparent molecular mass is slightly larger than the 140 kDa predicted from the cDNA sequence, we note that the protein is rich in proline residues (10%) and therefore may display aberrant mobility in SDS gel electrophoresis. (PMID: 9528809)

Stockage

Stockage:

Stocker à -20°C. Stable pendant un an après l'expédition.

Tampon de stockage:

PBS avec azoture de sodium à 0,02 % et glycérol à 50 % pH 7,3

L'aliquotage n'est pas nécessaire pour le stockage à -20C

*** Les 20ul contiennent 0,1% de BSA.

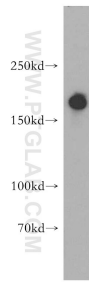
For technical support and original validation data for this product please contact:

T: 1 (888) 4PTGLAB (1-888-478-4522) (toll free in USA), or 1(312) 455-8498 (outside USA)

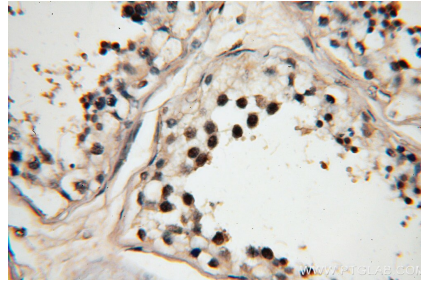
E: proteintech@ptglab.com
W: ptglab.com

This product is exclusively available under Proteintech Group brand and is not available to purchase from any other manufacturer.

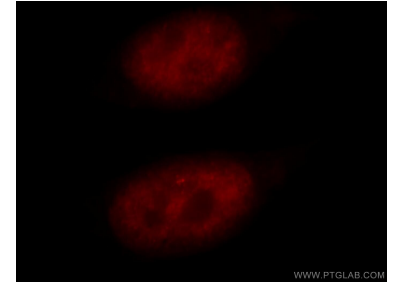
Données de validation sélectionnées



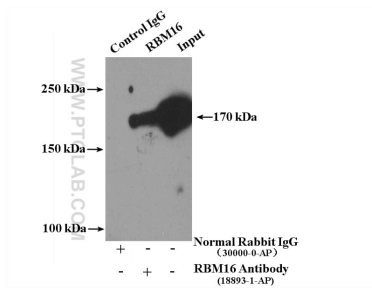
HT-1080 cells were subjected to SDS PAGE followed by western blot with 18893-1-AP (RBM16 antibody) at dilution of 1:2000 incubated at room temperature for 1.5 hours.



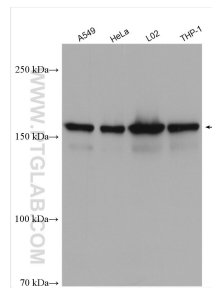
Immunohistochemical analysis of paraffin-embedded human testis using 18893-1-AP (RBM16 antibody) at dilution of 1:200 (under 40x lens).



Immunofluorescent analysis of HeLa cells, using RBM16 antibody 18893-1-AP at 1:25 dilution and Rhodamine-labeled goat anti-rabbit IgG (red).



IP Result of anti-RBM16 (IP:18893-1-AP, 4ug; Detection:18893-1-AP 1:800) with HeLa cells lysate 3600ug.



Various lysates were subjected to SDS PAGE followed by western blot with 18893-1-AP (RBM16 antibody) at dilution of 1:5000 incubated at room temperature for 1.5 hours.