

À des fins de recherche uniquement

# Anticorps Polyclonal de lapin anti-ADH1C



Numéro de catalogue: 18897-1-AP

3 Publications

## Informations de base

Numéro de catalogue:  
18897-1-AP

Taille:  
150ul , Concentration: 400 µg/ml by Nanodrop and 280 µg/ml by Bradford method using BSA as the standard;

Hôte:  
Lapin

Isotype:  
IgG

Immunogen Catalog Number:  
AG13528

Numéro d'acquisition GenBank:  
BC062476

Identification du gène (NCBI):  
126

Nom complet:  
alcohol dehydrogenase 1C (class I), gamma polypeptide

MW calculé  
375 aa, 40 kDa

MW observés:  
37-45 kDa

Méthode de purification:  
Purification par affinité contre l'antigène

Dilutions recommandées:  
WB 1:2000-1:12000  
IP 0.5-4.0 ug for IP and 1:500-1:2000 for WB  
IF 1:10-1:100

## Applications

Applications testées:  
IF, IP, WB, ELISA

Demandes citées:  
WB

Spécificité de l'espèce:  
Humain, rat, souris

Espèces citées:  
Humain, souris

Contrôles positifs:

WB : tissu hépatique de rat,

IP : tissu hépatique de souris,

IF : cellules HepG2,

## Informations générales

ADH1C (Alcohol dehydrogenase 1C) is also named as ADH3 and belongs to the zinc-containing alcohol dehydrogenase family. It catalyzes the rate-limiting step for ethanol metabolism: the oxidation of alcohol to acetaldehyde. The ADH1C gene is active in intestine and kidney in fetal and early postnatal life, and persists in the stomach and liver in adult life (PMID:4748759).

## Publications notables

Autrice	Pubmed ID	Journal	Application
Feifeng Song	34293286	Biochem Pharmacol	WB
Yunhui Xu	34265279	Biochem Pharmacol	WB
Xue Chen	33892114	Free Radic Biol Med	WB

## Stockage

Stockage:

Stocker à -20°C. Stable pendant un an après l'expédition.

Tampon de stockage:

PBS avec azoture de sodium à 0,02 % et glycérol à 50 % pH 7,3

L'aliquotage n'est pas nécessaire pour le stockage à -20C

\*\*\* Les 20ul contiennent 0,1% de BSA.

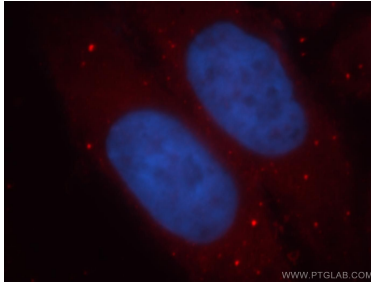
For technical support and original validation data for this product please contact:

T: 1 (888) 4PTGLAB (1-888-478-4522) (toll free in USA), or 1(312) 455-8498 (outside USA)

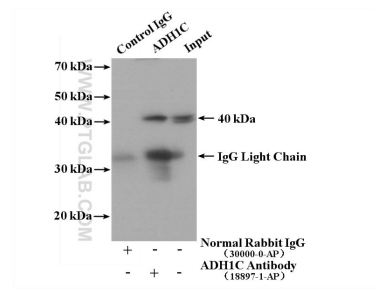
E: proteintech@ptglab.com  
W: ptglab.com

This product is exclusively available under Proteintech Group brand and is not available to purchase from any other manufacturer.

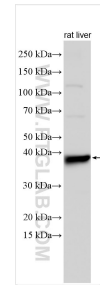
## Données de validation sélectionnées



Immunofluorescent analysis of HepG2 cells, using ADH1C antibody 18897-1-AP at 1:25 dilution and Rhodamine-labeled goat anti-rabbit IgG (red). Blue pseudocolor = DAPI (fluorescent DNA dye).



IP result of anti-ADH1C (IP:18897-1-AP, 4ug; Detection:18897-1-AP 1:1000) with mouse liver tissue lysate 4000 ug.



Various lysates were subjected to SDS PAGE followed by western blot with 18897-1-AP (ADH1C antibody) at dilution of 1:6000 incubated at room temperature for 1.5 hours.