

À des fins de recherche uniquement

Anticorps Polyclonal de lapin anti-BMP2



Numéro de catalogue: 18933-1-AP

Phare

53 Publications

Informations de base

Numéro de catalogue:
18933-1-AP

Taille:
150ul, Concentration: 600 µg/ml by Nanodrop and 253 µg/ml by Bradford method using BSA as the standard;

Hôte:
Lapin

Isotype:
IgG

Immunogen Catalog Number:
AG13501

Numéro d'acquisition GenBank:
BC069214

Identification du gène (NCBI):
650

Nom complet:
bone morphogenetic protein 2

MW calculé
396 aa, 44 kDa

Méthode de purification:
Purification par affinité contre l'antigène

Dilutions recommandées:
WB 1:500-1:1000

Applications

Applications testées:
WB, ELISA

Demandes citées:
IF, IHC, WB

Spécificité de l'espèce:
Humain

Espèces citées:
Humain, rat, souris, Hamster

Contrôles positifs:

WB: cellules HeLa,

Informations générales

Bone morphogenetic protein-2 (BMP-2) is a member of the transforming growth factor-beta (TGFB) superfamily. BMP2 is synthesized as a 60 kDa precursor that is processed in the secretory pathway to a small 18 kDa monomer; 2 monomers then associate to form the active 30 kDa homodimer, which binds to its receptor. There is also a 40-45 kDa form of BMP2, as an amino-terminal propeptide. BMP2 can induce bone formation and regeneration during early embryonic development. It is involved in the hedgehog pathway, TGF beta signaling pathway, and cytokine-cytokine receptor interaction.

Publications notables

Autrice	Pubmed ID	Journal	Application
Guangchun Dai	33102476	Front Cell Dev Biol	WB,IHC
Hong Liu	28944996	J Cell Mol Med	WB
Chuanhui Yin	32949110	Birth Defects Res	IHC

Stockage

Stockage:

Stocker à -20°C. Stable pendant un an après l'expédition.

Tampon de stockage:

PBS avec azoture de sodium à 0,02 % et glycérol à 50 % pH 7,3

L'aliquotage n'est pas nécessaire pour le stockage à -20C

*** Les 20ul contiennent 0,1% de BSA.

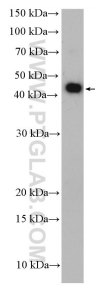
For technical support and original validation data for this product please contact:

T: 1 (888) 4PTGLAB (1-888-478-4522) (toll free in USA), or 1(312) 455-8498 (outside USA)

E: proteintech@ptglab.com
W: ptglab.com

This product is exclusively available under Proteintech Group brand and is not available to purchase from any other manufacturer.

Données de validation sélectionnées



HeLa cells were subjected to SDS PAGE followed by western blot with 18933-1-AP (BMP2 antibody) at dilution of 1:600 incubated at room temperature for 1.5 hours.