

À des fins de recherche uniquement

Anticorps Polyclonal de lapin anti-KIR2DL3



Numéro de catalogue: 18966-1-AP

Informations de base

| | | |
|--|--|--|
| Numéro de catalogue: 18966-1-AP | Numéro d'acquisition GenBank: BC032422 | Méthode de purification: Purification par affinité contre l'antigène |
| Taille: 150ul , Concentration: 400 µg/ml by Nanodrop and 200 µg/ml by Bradford method using BSA as the standard; | Identification du gène (NCBI): 3804 | Dilutions recommandées: WB 1:500-1:1000 |
| Hôte: Lapin | Nom complet: killer cell immunoglobulin-like receptor, two domains, long cytoplasmic tail, 3 | |
| Isotype: IgG | MW calculé 341 aa, 38 kDa | |
| Immunogen Catalog Number: AG5163 | MW observés: 58 kDa | |

Applications

| | |
|---|--|
| Applications testées: WB, ELISA | Contrôles positifs: WB : tissu hépatique humain, |
| Spécificité de l'espèce: Humain | |

Informations générales

Killer cell immunoglobulin-like receptors (KIRs) are a diverse family of inhibitory and activating receptors expressed on NK cells and a subset of T cells (PMID: 11861603). These polymorphic receptors interact with specific motifs on HLA class I molecules, modulate NK cytolytic activity and are encoded by genes located on chromosome 19q13.4 (PMID: 17069649). KIR2DL3, also known as CD158B2 or NKAT2, is an inhibitory receptor that is specific for HLA-C alleles (HLA-Cw1, HLA-Cw3 and HLA-Cw7) (PMID: 10196125). It is a 341-amino acid transmembrane glycoprotein consisting of an extracellular region containing two C2-type Ig-like domains, a 19-amino acid hydrophobic transmembrane region, and a long cytoplasmic tail with two immunoreceptor tyrosine-based inhibitory motifs (ITIMs). KIR2DL3 inhibits the cytolytic activity of NK cells thus preventing cell lysis (PMID: 7724594).

Stockage

Stockage:
Stocker à -20°C. Stable pendant un an après l'expédition.
Tampon de stockage:
PBS avec azoture de sodium à 0,02 % et glycérol à 50 % pH 7,3
L'aliquotage n'est pas nécessaire pour le stockage à -20C

*** Les 20ul contiennent 0,1% de BSA.

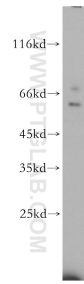
For technical support and original validation data for this product please contact:

T: 1 (888) 4PTGLAB (1-888-478-4522) (toll free in USA), or 1(312) 455-8498 (outside USA)

E: proteintech@ptglab.com
W: ptglab.com

This product is exclusively available under Proteintech Group brand and is not available to purchase from any other manufacturer.

Données de validation sélectionnées



human liver tissue were subjected to SDS PAGE followed by western blot with 18966-1-AP (KIR2DL3 antibody) at dilution of 1:500 incubated at room temperature for 1.5 hours.