

À des fins de recherche uniquement

Anticorps Polyclonal de lapin anti-TGF Beta 1



Numéro de catalogue: 18978-1-AP

74 Publications

Informations de base

Numéro de catalogue: 18978-1-AP	Numéro d'acquisition GenBank: NM_000660	Méthode de purification: Purification par affinité contre l'antigène
Taille: 150ul , Concentration: 220 µg/ml by Bradford method using BSA as the standard;	Identification du gène (NCBI): 7040	Dilutions recommandées: WB 1:200-1:1000 IHC 1:50-1:500
Hôte: Lapin	Nom complet: transforming growth factor, beta 1	
Isotype: IgG	MW calculé: 44 kDa	
	MW observés: 25 kDa	

Applications

Applications testées: IHC, WB, ELISA	Contrôles positifs: WB : cellules MCF-7, IHC : tissu de cancer du poumon humain,
Demandes citées: Cell treatment, IF, IHC, WB	
Spécificité de l'espèce: Humain, rat, souris	
Espèces citées: canin, Humain, porc, rat, souris	
Remarque-IHC: il est suggéré de démasquer l'antigène avec un tampon de TE buffer pH 9,0; (*) À défaut, 'le démasquage de l'antigène peut être effectué avec un tampon citrate pH 6,0.	

Informations générales

TGFB, also named as LAP and TGFB1, is a multifunctional peptide that controls proliferation, differentiation, and other functions in many cell types. TGFB acts synergistically with TGFA in inducing transformation. It also acts as a negative autocrine growth factor. Dysregulation of TGFB activation and signaling may result in apoptosis. Many cells synthesize TGFB and almost all of them have specific receptors for it. TGFB positively and negatively regulates many other growth factors. It plays an important role in bone remodeling as it is a potent stimulator of osteoblastic bone formation, causing chemotaxis, proliferation and differentiation in committed osteoblasts. It is highly expressed in bone. Mutation of TGFB are the cause of Camurati-Engelmann disease (CED) which known as progressive diaphyseal dysplasia 1 (DPD1). Full length, inactive 44 kD TGFB1 is cleaved into mature TGFB1 (13 kD). TGFB1 also homodimerizes and heterodimerizes with TGFB2, so there is potential for multiple different band sizes in WB (12, 25, 45 to 65 kDa).

Publications notables

Autrice	Pubmed ID	Journal	Application
Fang Dou	30215298	Rejuvenation Res	WB
Xin Liang	28850927	Biomed Pharmacother	WB
Haoyu Ruan	27581744	Sci Rep	IHC

Stockage

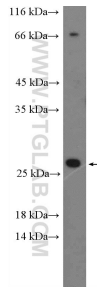
Stockage:
Stocker à -20°C. Stable pendant un an après l'expédition.
Tampon de stockage:
PBS avec azoture de sodium à 0,02 % et glycérol à 50 % pH 7,3
L'aliquotage n'est pas nécessaire pour le stockage à -20C

*** Les 20ul contiennent 0,1% de BSA.

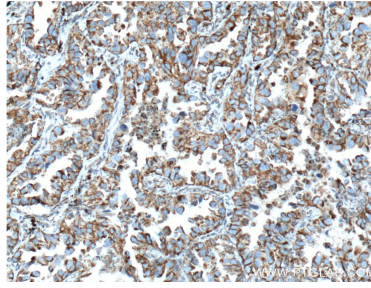
For technical support and original validation data for this product please contact:
T: 1 (888) 4PTGLAB (1-888-478-4522) (toll free in USA), or 1(312) 455-8498 (outside USA)
E: proteintech@ptglab.com
W: ptglab.com

This product is exclusively available under Proteintech Group brand and is not available to purchase from any other manufacturer.

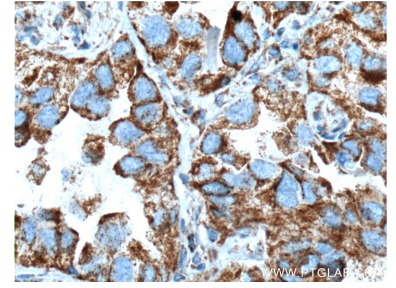
Données de validation sélectionnées



MCF-7 cells were subjected to SDS PAGE followed by western blot with 18978-1-AP (TGF-beta 1 antibody at dilution of 1:300 incubated at room temperature for 1.5 hours.



Immunohistochemical analysis of paraffin-embedded human lung cancer tissue slide using 18978-1-AP (TGF-beta 1 antibody at dilution of 1:200 (under 10x lens). Heat mediated antigen retrieval with Tris-EDTA buffer (pH 9.0).



Immunohistochemical analysis of paraffin-embedded human lung cancer tissue slide using 18978-1-AP (TGF-beta 1 antibody at dilution of 1:200 (under 40x lens). Heat mediated antigen retrieval with Tris-EDTA buffer (pH 9.0).