

À des fins de recherche uniquement

Anticorps Polyclonal de lapin anti-EGFR-Specific



Numéro de catalogue: 18986-1-AP

Phare

131 Publications

Informations de base

Numéro de catalogue:

18986-1-AP

Taille:

150ul, Concentration: 800 µg/ml by Nanodrop;

Hôte:

Lapin

Isotype:

IgG

Numéro d'acquisition GenBank:

NM_005228

Identification du gène (NCBI):

1956

Nom complet:

epidermal growth factor receptor (erythroblastic leukemia viral (v-erb-b) oncogene homolog, avian)

MW calculé

134 kDa

MW observés:

145-165 kDa

Méthode de purification:

Purification par affinité contre l'antigène

Dilutions recommandées:

WB 1:1000-1:6000

IP 0.5-4.0 ug for IP and 1:500-1:1000 for WB

IF 1:750-1:3000

Applications

Applications testées:

FC, IF, IP, WB, ELISA

Demandes citées:

ChIP, CoIP, FC, IF, IHC, IP, WB

Spécificité de l'espèce:

Humain

Espèces citées:

Humain, porc, rat, souris

Contrôles positifs:

WB : cellules HepG2, cellules A431, cellules HeLa, cellules HeLa/RPE1, cellules L02, cellules MCF-7, cellules NCI-H1299, cellules NCL-H1299, multi-cellules

IP : cellules MCF-7,

IF : cellules A431,

Informations générales

ERBB1, also named as EGFR, is a receptor for EGF, but also for other members of the EGF family, as TGF-alpha, amphiregulin, betacellulin, heparin-binding EGF-like growth factor, GP30 and vaccinia virus growth factor. ERBB1 is involved in the control of cell growth and differentiation. Phosphorylates MUC1 in breast cancer cells and increases the interaction of MUC1 with C-SRC and CTNNB1/beta-catenin. Isoform 2/truncated isoform of ERBB1 may act as an antagonist. EGFR is associated with lung cancer. The antibody is specific to isoform1.

Publications notables

Autrice	Pubmed ID	Journal	Application
Haile Zhao	34658851	Front Pharmacol	WB,IP
Taiwei Wang	36169181	Oncol Rep	WB
Jing Cai	31826234	Carcinogenesis	WB,IHC,IF

Stockage

Stockage:

Stocker à -20°C. Stable pendant un an après l'expédition.

Tampon de stockage:

PBS avec azoture de sodium à 0,02 % et glycérol à 50 % pH 7,3

L'aliquotage n'est pas nécessaire pour le stockage à -20C

*** Les 20ul contiennent 0,1% de BSA.

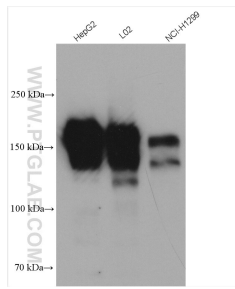
For technical support and original validation data for this product please contact:

T: 1 (888) 4PTGLAB (1-888-478-4522) (toll free in USA), or 1(312) 455-8498 (outside USA)

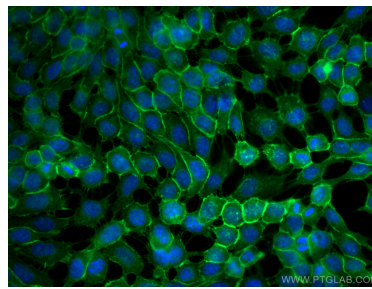
E: proteintech@ptglab.com
W: ptglab.com

This product is exclusively available under Proteintech Group brand and is not available to purchase from any other manufacturer.

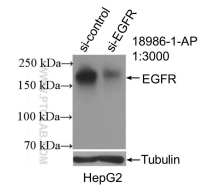
Données de validation sélectionnées



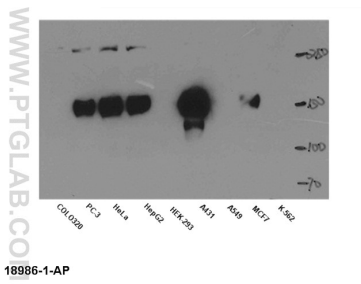
Various lysates were subjected to SDS PAGE followed by western blot with 18986-1-AP (EGFR-Specific antibody) at dilution of 1:3000 incubated at room temperature for 1.5 hours.



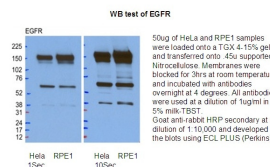
Immunofluorescent analysis of (-20°C Methanol) fixed A431 cells using EGFR-Specific antibody (18986-1-AP) at dilution of 1:1500 and CoraLite@488-Conjugated AffiniPure Goat Anti-Rabbit IgG(H+L).



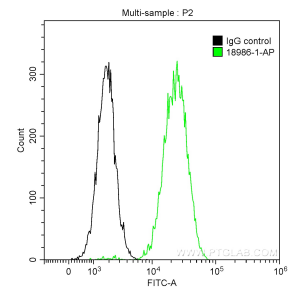
WB result of EGFR-Specific antibody (18986-1-AP; 1:3000; incubated at room temperature for 1.5 hours) with sh-Control and sh-EGFR-Specific transfected HepG2 cells.



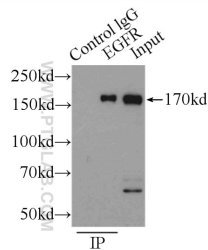
WB result of anti-EGFR (18986-1-AP) in different cell lysates.



WB result of anti-EGFR (18986-1-AP) in HeLa and RPE1 cell by Dr.Kodani, Andrew.



1×10^6 A431 cells were stained with 0.2 ug Anti-Human EGFR-Specific (18986-1-AP) and CoraLite@488-Conjugated AffiniPure Goat Anti-Rabbit IgG(H+L) at dilution 1:1000 (green), and 0.2 ug Control Antibody. Cells were fixed with 90% MeOH.



IP Result of anti-EGFR-Specific (IP:18986-1-AP, 3ug; Detection:18986-1-AP 1:500) with MCF-7 cells lysate 2500ug.