

À des fins de recherche uniquement

Anticorps Polyclonal de lapin anti-SLC24A4



Numéro de catalogue: 18992-1-AP

Phare

4 Publications

Informations de base

Numéro de catalogue:
18992-1-AP

Taille:
150ul, Concentration: 300 µg/ml by Nanodrop and 247 µg/ml by Bradford method using BSA as the standard;

Hôte:
Lapin

Isotype:
IgG

Numéro d'acquisition GenBank:
NM_153646

Identification du gène (NCBI):
123041

Nom complet:
solute carrier family 24 (sodium/potassium/calcium exchanger), member 4

MW calculé
69 kDa

MW observés:
62-90 kDa

Méthode de purification:
Purification par affinité contre l'antigène

Dilutions recommandées:
WB 1:2000-1:16000
IHC 1:50-1:500
IF 1:50-1:500

Applications

Applications testées:
IF, IHC, WB, ELISA

Demandes citées:
IHC, WB

Spécificité de l'espèce:
Humain, souris

Espèces citées:
rat, souris

Remarque-IHC: il est suggéré de démasquer l'antigène avec un tampon de TE buffer pH 9,0; (*) A défaut, le démasquage de l'antigène peut être effectué avec un tampon citrate pH 6,0.

Contrôles positifs:

WB : tissu cérébral de souris, cellules HeLa, tissu cardiaque de souris

IHC : tissu cérébral de souris, tissu cardiaque humain

IF : tissu oculaire de souris,

Informations générales

SLC24A4, also named as NCKX4, belongs to the sodium/potassium/calcium exchanger family. SLC24A4 transports 1 Ca²⁺ and 1 K⁺ in exchange for 4 Na⁺. Genetic variations in SLC24A4 are associated with skin/hair/eye pigmentation type 6 (SHEP6).

Publications notables

Autrice	Pubmed ID	Journal	Application
Akane Inoue	34592494	Bone	IHC
A L J J Bronckers	27752731	Calcif Tissue Int	WB
Lacruz Rodrigo S RS	21809343	J Cell Physiol	WB

Stockage

Stockage:

Stocker à -20°C. Stable pendant un an après l'expédition.

Tampon de stockage:

PBS avec azoture de sodium à 0,02 % et glycérol à 50 % pH 7,3

L'aliquote n'est pas nécessaire pour le stockage à -20C

*** Les 20ul contiennent 0,1% de BSA.

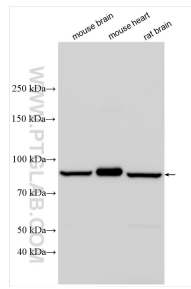
For technical support and original validation data for this product please contact:

T: 1 (888) 4PTGLAB (1-888-478-4522) (toll free in USA), or 1(312) 455-8498 (outside USA)

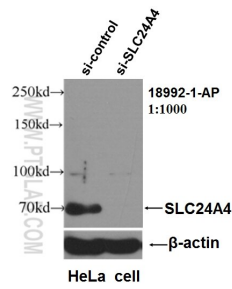
E: proteintech@ptglab.com
W: ptglab.com

This product is exclusively available under Proteintech Group brand and is not available to purchase from any other manufacturer.

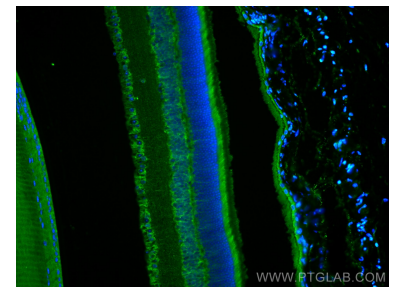
Données de validation sélectionnées



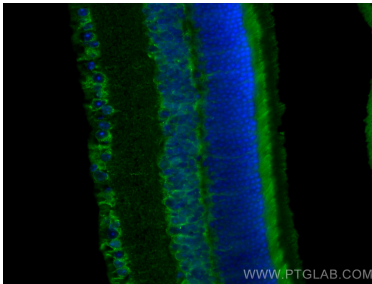
Various lysates were subjected to SDS PAGE followed by western blot with 18992-1-AP (SLC24A4 antibody) at dilution of 1:8000 incubated at room temperature for 1.5 hours.



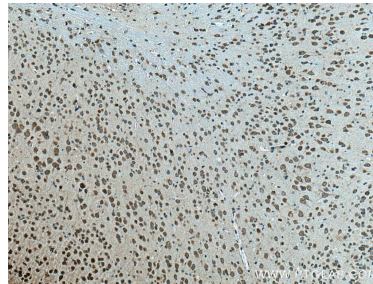
WB result of SLC24A4 antibody (18992-1-AP, 1:1000) with si-Control and si-SLC24A4 transfected HeLa cells.



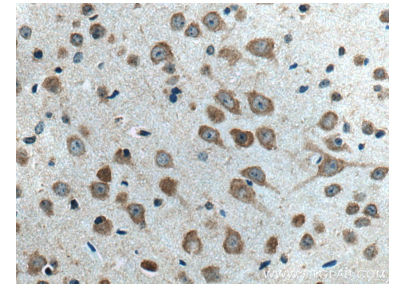
Immunofluorescent analysis of (4% PFA) fixed mouse eye tissue using SLC24A4 antibody (18992-1-AP) at dilution of 1:200 and CoraLite®488-Conjugated AffiniPure Goat Anti-Rabbit IgG(H+L).



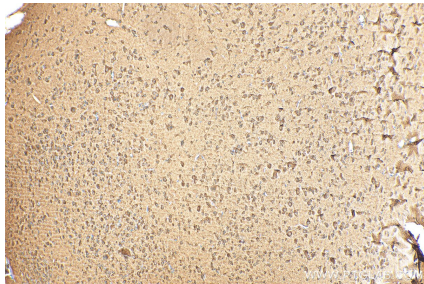
Immunofluorescent analysis of (4% PFA) fixed mouse eye tissue using SLC24A4 antibody (18992-1-AP) at dilution of 1:200 and CoraLite®488-Conjugated AffiniPure Goat Anti-Rabbit IgG(H+L).



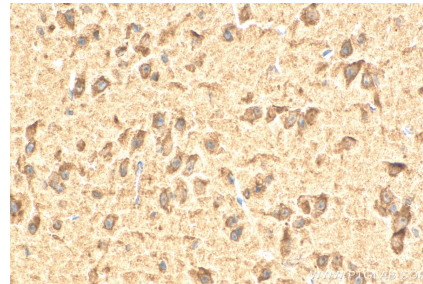
Immunohistochemical analysis of paraffin-embedded mouse brain tissue slide using 18992-1-AP (SLC24A4 antibody) at dilution of 1:200 (under 10x lens). Heat mediated antigen retrieval with Tris-EDTA buffer (pH 9.0).



Immunohistochemical analysis of paraffin-embedded mouse brain tissue slide using 18992-1-AP (SLC24A4 antibody) at dilution of 1:200 (under 40x lens). Heat mediated antigen retrieval with Tris-EDTA buffer (pH 9.0).



Immunohistochemical analysis of paraffin-embedded mouse brain tissue slide using 18992-1-AP (SLC24A4 antibody) at dilution of 1:200 (under 10x lens). Heat mediated antigen retrieval with Tris-EDTA buffer (pH 9.0).



Immunohistochemical analysis of paraffin-embedded mouse brain tissue slide using 18992-1-AP (SLC24A4 antibody) at dilution of 1:200 (under 40x lens). Heat mediated antigen retrieval with Tris-EDTA buffer (pH 9.0).