

À des fins de recherche uniquement

Anticorps Polyclonal de lapin anti-SGMS1



Numéro de catalogue: 19050-1-AP

Phare

7 Publications

Informations de base

Numéro de catalogue:

19050-1-AP

Taille:

150ul, Concentration: 650 µg/ml by Nanodrop and 367 µg/ml by Bradford method using BSA as the standard;

Hôte:

Lapin

Isotype:

IgG

Immunogen Catalog Number:

AG5246

Numéro d'acquisition GenBank:

BC042899

Identification du gène (NCBI):

259230

Nom complet:

sphingomyelin synthase 1

MW calculé

49 kDa

MW observés:

25 kDa, 50-55 kDa

Méthode de purification:

Purification par affinité contre l'antigène

Dilutions recommandées:

WB 1:500-1:1000

IP 0.5-4.0 ug for IP and 1:200-1:1000 for WB

IHC 1:20-1:200

Applications

Applications testées:

IHC, IP, WB, ELISA

Demandes citées:

IF, IHC, WB

Spécificité de l'espèce:

Humain, rat, souris

Espèces citées:

Humain, souris

Remarque-IHC: il est suggéré de démasquer l'antigène avec un tampon de TE buffer pH 9,0; (*) A défaut, 'le démasquage de l'antigène peut être effectué avec un tampon citrate pH 6,0.

Contrôles positifs:

WB : tissu cardiaque humain,

IP : tissu cardiaque de souris,

IHC : tissu hépatique humain,

Informations générales

Sphingomyelin synthase (SMS), with two isoforms, SMS1 (SGMS1) and SMS2, is a key enzyme involved in the generation and development of SM. SMS can participate in inflammation, atherosclerosis, proliferation, apoptosis, differentiation and other functions (PMID:30535436). SMS1 is frequently downregulated in various solid cancers, more particularly in melanoma (PMID:31114500). SGMS1 has two isoforms.

Publications notables

| Autrice | Pubmed ID | Journal | Application |
|---------------|-----------|---------------------|-------------|
| Mei-Hong Lu | 30243987 | Exp Neurol | WB,IF |
| Xin Tracy Liu | 36333295 | Oncogenesis | WB |
| Yi-Yu Qi | 35391788 | Drug Des Devel Ther | IF |

Stockage

Stockage:

Stocker à -20°C. Stable pendant un an après l'expédition.

Tampon de stockage:

PBS avec azoture de sodium à 0,02 % et glycérol à 50 % pH 7,3

L'aliquotage n'est pas nécessaire pour le stockage à -20C

***** Les 20ul contiennent 0,1% de BSA.**

For technical support and original validation data for this product please contact:

T: 1 (888) 4PTGLAB (1-888-478-4522) (toll free in USA), or 1(312) 455-8498 (outside USA)

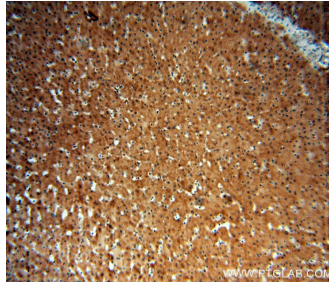
E: proteintech@ptglab.com
W: ptglab.com

This product is exclusively available under Proteintech Group brand and is not available to purchase from any other manufacturer.

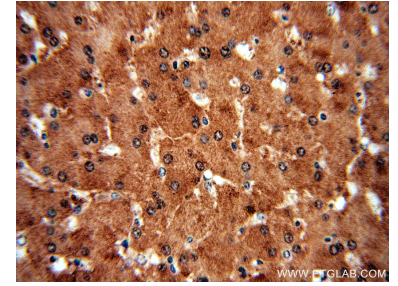
Données de validation sélectionnées



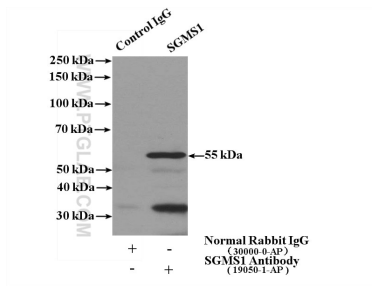
human heart tissue were subjected to SDS PAGE followed by western blot with 19050-1-AP (SGMS1 antibody) at dilution of 1:300 incubated at room temperature for 1.5 hours.



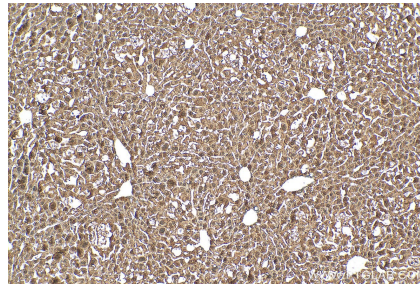
Immunohistochemical analysis of paraffin-embedded human liver using 19050-1-AP (SGMS1 antibody) at dilution of 1:50 (under 10x lens).



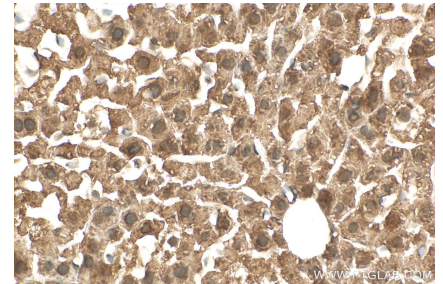
Immunohistochemical analysis of paraffin-embedded human liver using 19050-1-AP (SGMS1 antibody) at dilution of 1:50 (under 40x lens).



IP Result of anti-SGMS1 (IP:19050-1-AP, 4ug; Detection:19050-1-AP 1:300) with mouse heart tissue lysate 4000ug.



Immunohistochemical analysis of paraffin-embedded mouse liver tissue slide using 19050-1-AP (SGMS1 antibody) at dilution of 1:200 (under 10x lens). Heat mediated antigen retrieval with Tris-EDTA buffer (pH 9.0).



Immunohistochemical analysis of paraffin-embedded mouse liver tissue slide using 19050-1-AP (SGMS1 antibody) at dilution of 1:200 (under 40x lens). Heat mediated antigen retrieval with Tris-EDTA buffer (pH 9.0).