

À des fins de recherche uniquement

Anticorps Polyclonal de lapin anti-MDM2



Numéro de catalogue: 19058-1-AP

Phare

48 Publications

Informations de base

Numéro de catalogue:
19058-1-AP

Taille:
150ul , Concentration: 300 µg/ml by
Bradford method using BSA as the
standard;

Hôte:
Lapin

Isotype:
IgG

Numéro d'acquisition GenBank:
NM_002392

Identification du gène (NCBI):
4193

Nom complet:
Mdm2 p53 binding protein homolog
(mouse)

MW calculé
55 kDa

MW observés:
30-55 kDa, 60-100 kDa

Méthode de purification:
Purification par affinité contre
l'antigène

Dilutions recommandées:
WB 1:200-1:1000

Applications

Applications testées:
WB, ELISA

Demandes citées:
COIP, IF, IHC, IP, WB

Spécificité de l'espèce:
Humain, rat, souris

Espèces citées:
Humain, rat, souris

Contrôles positifs:

WB : cellules A431,

Informations générales

MDM2, also known as HDM2, is a protein of the E3 ubiquitin-ligase family. MDM2 is recognized as a proto-oncogene and is over-expressed in a wide range of human malignancies including soft tissue carcinomas and breast cancer. MDM2 can bind to the p53 tumor suppressor protein with high affinity, and negatively regulates p53 by mediating its ubiquitination and proteosomal degradation (PMID: 17000718). MDM2 has some isoforms with calculated molecular mass of 25-55kD, and can be detected as 90-97kD. In addition to full length MDM2, two lower bands (85kD and 75kD) are often observed which are likely to be produced by translation initiation at methionine codons 50 and 60. Another isoform of MDM2 is often observed as 57-60kD in cell lines which is indeed a caspase cleavage product of MDM2 at residue 361 (PMID: 19565011, 9840926, 7689721).

Publications notables

Autrice	Pubmed ID	Journal	Application
Qian Wang	31839745	Int J Med Sci	WB
Shuai Li	31626714	FEBS Lett	WB,IP
Yafei Guo	34650049	Cell Death Dis	WB

Stockage

Stockage:

Stocker à -20°C. Stable pendant un an après l'expédition.

Tampon de stockage:

PBS avec azoture de sodium à 0,02 % et glycérol à 50 % pH 7,3

L'aliquotage n'est pas nécessaire pour le stockage à -20C

*** Les 20ul contiennent 0,1% de BSA.

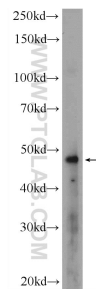
For technical support and original validation data for this product please contact:

T: 1 (888) 4PTGLAB (1-888-478-4522) (toll free
in USA), or 1(312) 455-8498 (outside USA)

E: proteintech@ptglab.com
W: ptglab.com

This product is exclusively available under Proteintech Group brand and is not available to purchase from any other manufacturer.

Données de validation sélectionnées



A431 cells were subjected to SDS PAGE followed by western blot with 19058-1-AP (MDM2 Antibody) at dilution of 1:300 incubated at 4 degree celsius over night.